

① Base

Can be mounted to the wall and fully wired before final assembly of the case.

② Mounting rails (extendible)

They permit concealed mounting of the case and prevent unauthorized removal of the units.

③ Corner posts

For screwless mounting of the front panel. The control elements can be connected to the assemblies ready for use.

④ Supports*

Increase the rigidity of the front panels when keys and plug connectors are installed.

⑤ Front panel*

With screwless mounting the whole panel can be used for controls and labels.

⑥ Case frame

Can be removed independent of assemblies, front panel and cable connections.

⑦ Transparent cover

With knurled screw for the protection of the control elements.

⑧ Cable plate

For cable fitting in terminal compartment. 46 inline terminals, also for through-way PCBs.

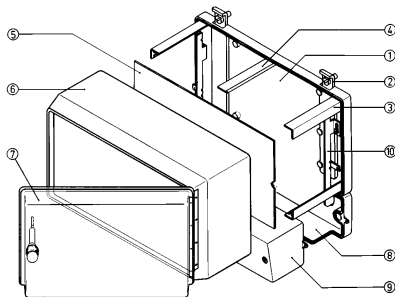
⑨ Terminal compartment cover

Can be separately removed from the case frame and can be secured to prevent unauthorized opening.

⑩ Set of locking bars*

Facilitates the removal of the case frame even on fully fitted units.

*separately available, must be ordered with every case.



An OKW development with removable case frame. Free access to the interior from all sides. This helps equipping and connection work. It is possible to remove the case frame and refix it even after the unit has been wall-mounted – a special advantage during servicing. Available with and without transparent cover.

APPLICATIONS

Well-proven in heating, ventilation and air conditioning systems, in pool and sauna applications. And for industrial control systems.

ASSEMBLY

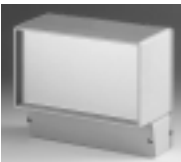
In three simple steps:



1. Fix the base part on the wall by means of mounting rails.



2. Mount the front panel. It snaps in place and rests without any screws upon four corner posts resp. two additional supports.



3. Mount the case frame and lock it with the set of terminal bars. Fix the cover of the terminal compartment with screws.

WALL-MOUNTING CASE

A modular assembly system

MATERIAL

Case parts in high-impact polystyrene (UL 94 HB).

Transparent cover in Luran.

Matt anodized aluminium front panel, thickness 2.0 mm.

Also available in other materials on request. Please refer to the specifications on pages 215-217.

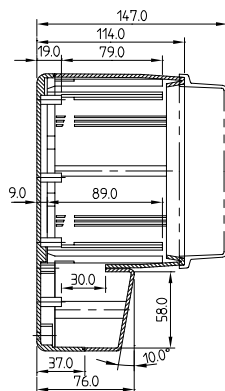
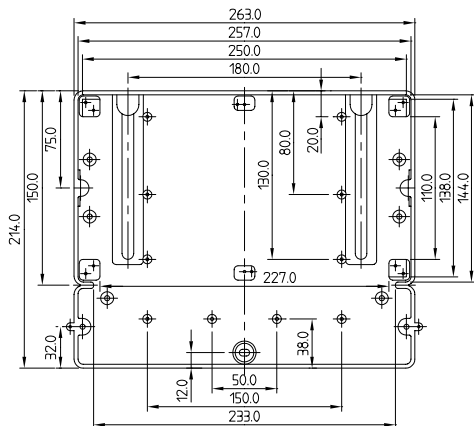


STANDARD COLOURS

Case frame and cover for terminal compartment off-white, RAL 9002, base part pebble grey, RAL 7032.

Please refer to colour chart page 214.

Detailed drawing available on demand in dwg or dxf format.



MODIFICATIONS AS PER CUSTOMER'S REQUIREMENTS

See pages 210-213.

CASE			Version	Part-No.
Outside dim. in mm	W	H		
214	263	114	without transparent cover	A 96 24 065
214	263	147	with transparent cover	A 96 24 165
ACCESSORIES				
Article	Version			
Front panel	for case without transparent cover			
Front panel	for case with transparent cover			
Set of locking bars	for quick locking / unlocking the case frame to / from the base			
Set of supports	with fastening screws			