

YOUR
ADVANTAGE

- Minimum effort with screwless case assembly.



Save money, either during production or later with maintenance.

- It can be loaded up to 20 kg. Test which were performed more than a hundred times confirm the reliability of this snap-mechanism.
- Disassembly / Servicing. The hooks can be easily unlocked from their fixing points by a dismantling key or screw-driver (\varnothing up to 3 mm). The restoring force of the gasket lifts up the base part for opening.
- Sealed up to IP 65 without extra costs due to pre-fitted gasket in the top part.
- Recessed area for membrane keyboards.
- Easy wall-mounting. Invisible wall-mounting in pre-moulded shafts within the base part. As an alternative, there are separate wall-mounting brackets for exterior mounting available as accessories.
- Integrated fixing pillars in the base and top part.

STANDARD
COLOURS

Light grey, RAL 7035.
Please refer to colour chart page 214.

MATERIAL

ABS (UL 94 HB).
Also available in other materials on request. Please refer to the specifications on pages 215-217.



SEALED, RATIONAL, CONVINCING IN DESIGN.

SNAPTEC offers many advantages in form and function. See for yourself the high robustness and choose an inexpensive alternative within SNAPTEC!

Form and function one unit. The surface corresponds to the typical high OKW standard. There are no visible screw fixings.

APPLICATIONS

Case series with a multitude of applications in the field of electric installations and electronic systems.



ELECTRONICS

Applications with electro-technical components for low voltage, e.g. potentiometers, time controllers, coded control units, control units with buttons, signal mixer etc.



INSTALLATION

Applications for light voltage with electro-mechanical components, e.g. relays, undervoltage no-close release, FI switches, fuses, distributor, supply meter etc.

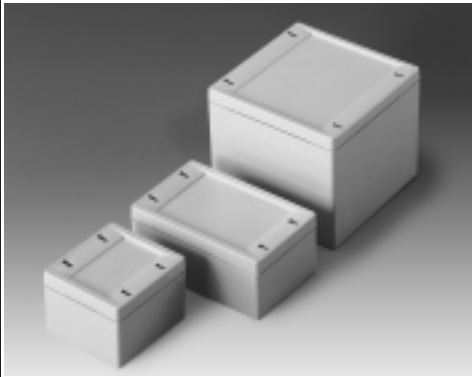
MODIFICATIONS
AS PER
CUSTOMER'S
REQUIREMENTS

Machining on modern CNC-controlled machines.
Lacquering, Silk screen and tampo printing.
See pages 210-213.

DESIGN

Two-part case. Four fitting snap-in hooks ensure the necessary pressure onto the gasket in order to achieve protection class IP 65. The hooks can be unlocked from their fixing parts by a dismantling key or screw-driver (\varnothing up to 3 mm). Fastening towers for the mounting of PCBs are in the base and top part.

PROTECTION CLASS IP 65

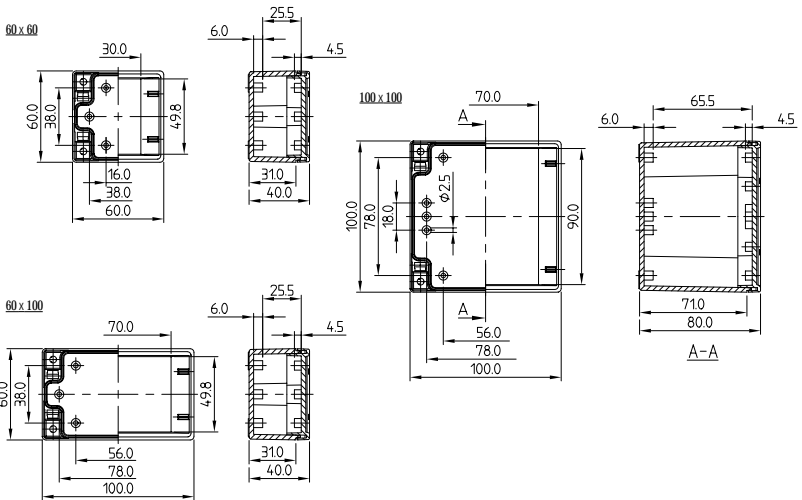


NEW: Covers for locking the openings now included.

SUPPLY

1 top and 1 base part with pre-fitted gasket. Covers for the locking openings. Dismantling key.

Detailed drawing available on demand in dwg or dxf format.



CASE					Part-No.
Outside dim. in mm	Colour	Material	Max. PCB dim. in mm		
L W H			Top	Base	
100 100 80	light grey	ABS (UL 94 HB)	68 x 90	69 x 91	C 30 10 101
60 100 40	light grey	ABS (UL 94 HB)	50 x 68	52 x 69	C 30 06 101
60 60 40	light grey	ABS (UL 94 HB)	28 x 50	30 x 52	C 30 06 061
ACCESSORIES					
Article	Applications / Supply				
Wall-mounting brackets	for exterior wall-mounting, including 4 fixing elements				
					C 22 99 028