

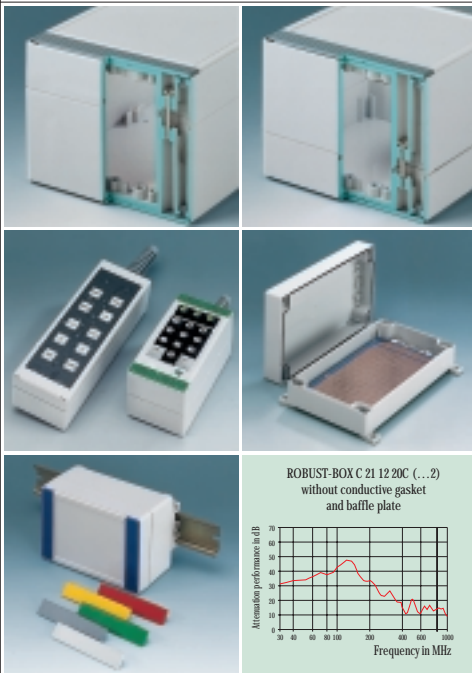


ROBUST-BOXES

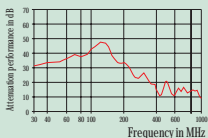
ROBUST-BOXES

YOUR ADVANTAGE

- Two standard materials: ABS – approved as a terminal mounting case or as polycarbonate – a solid and robust case, with high heat resistance for use in adverse environments.
- Easy-assembly construction. The case shells can be used as either top or base section.
- Solid and sealed up to IP 65.
- The cover fixings are outside of the sealed area. The fixing screws are rust proof and captured in the cover.
- There is an area recessed by min. 0.8 mm for the mounting of membrane keyboards.
- Colourful cover strips for coding (as an alternative to the standard version in light grey).
- Variable. 11 basic dimensions in 2 and / or 3 different heights.
- Applicable as desk top case and wall-mounting case.
- Large variety of accessories, e.g. case feet, wall-mounting brackets, PCB support etc.



ROBUST-BOX C 21 12 20C (...2)
without conductive gasket
and baffle plate



SEALED, ROBUST, CONVINCING DESIGN.

Two case ranges available in ABS and polycarbonate with the same easy-assembly construction and a wide range of applications.

The construction, using cover strips in the screw areas, gives the user various identification options. This means that by using different coloured cover strips, the user can code his equipment, e.g. installation cases for ventilation with blue cover strips, for heating with red cover strips etc.

APPLICATIONS

This case system is especially suitable for a wide range of electric installations, e.g. heating, climate, ventilation, machine building and construction units. The system is also ideal for many electronic applications.

Further applications are control units, machine controller, internal and external sensors, hand-held control units etc.

EMC

Cases marked with \neq are available with aluminium metallization on demand. The shielding effect amounts to approx 30-35 dB (please refer to diagram). The bonding can be improved by contact strips. See pages 207-209.

MODIFICATIONS AS PER CUSTOMER'S REQUIREMENTS

Machining on modern CNC-controlled machines. Lacquering. Silk screen and tampon printing.

Important: Please appoint the parts with or without groove.

See pages 210-213.

ROBUST-BOX WIDTH 80

Outside dimensions in mm

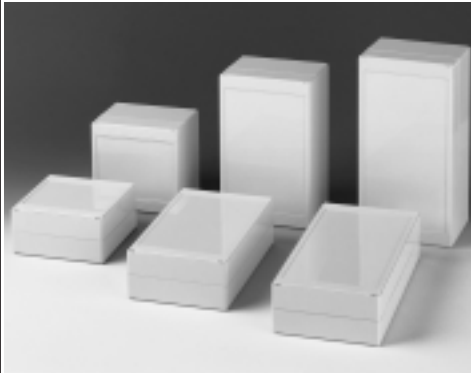
Length	Width	Height
80	80	60/80
120	80	60/80
160	80	60/80
240	80	60/80



ROBUST-BOX WIDTH 120

Outside dimensions in mm

Length	Width	Height
120	120	60/90
200	120	60/90
240	120	60/90



ROBUST-BOX WIDTH 160

Outside dimensions in mm

Length	Width	Height
160	160	60/90
240	160	60/90
<i>new:</i>		
240	160	120



ROBUST-BOX in polycarbonate with transparent top on demand.

STANDARD COLOURS

One-coloured: light grey, RAL 7035.

Two-coloured: case light grey, RAL 7035; cover strips alternatively in silver grey, RAL 7001 / red, RAL 3020 / yellow, RAL 1023 / green, RAL 6024 or blue, RAL 5017.

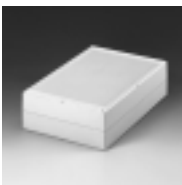
(Colourful cover strips see accessories on page 89).

See also colour chart page 214.

MATERIAL

ABS (UL 94 HB) or polycarbonate (UL 94 HB). Please refer to the specifications pages 215-217.

*NEW
IN PROGRAM*



ROBUST-BOX WIDTH 200

300 x 200 x 80/120/160



ROBUST-BOX WIDTH 240

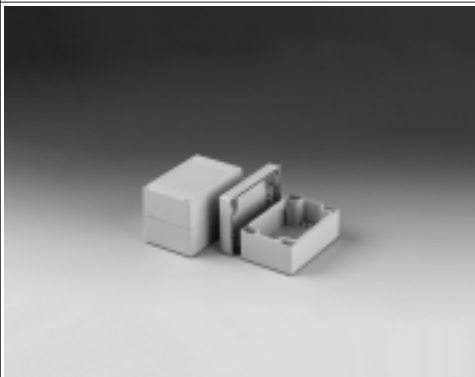
360 x 240 x 80/120/160

VERSION I

Top and base
ABS (UL 94 HB);
colour: light grey, RAL 7035.

VERSION II

Top and base
polycarbonate (UL 94 HB);
colour: light grey, RAL 7035.

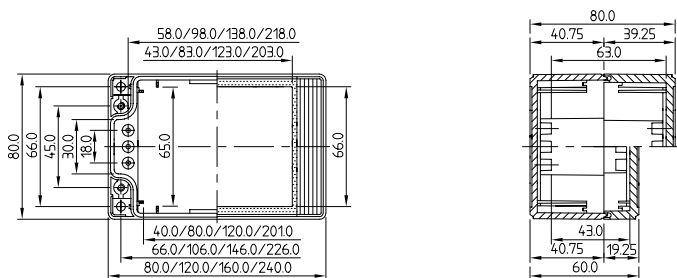


SUPPLY

Two case shells (one with groove, one with tongue) with gasket; each with two pairs of cover strips (the base ones with two holes for the rubber feet) in light grey.
Assembly kit.

Detailed drawing available on demand in dwg or dxf format.

⊕ ⊕ = Type of screw for case fixing: cross head



(Part-No. with \neq see EMC page 82)

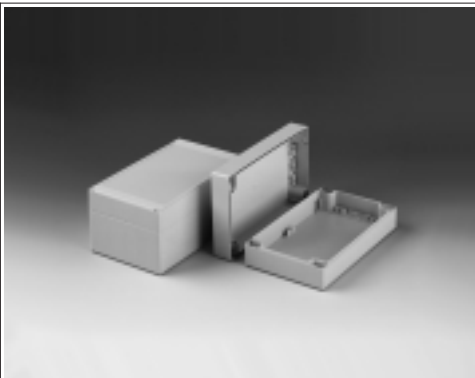
⊕ Z (PZ2)

Part-No.	CASE LENGTH 80			CASE LENGTH 160			Part-No.		
	Version	Outside dim. in mm			Version	Outside dim. in mm			
		L	W	H		L	W	H	
C 20 08 081 \neq	I	80	80	60	I	160	80	60	C 20 08 161 \neq
C 21 08 081 \neq	I	80	80	80	I	160	80	80	C 21 08 161 \neq
C 20 08 082 \neq	II	80	80	60	II	160	80	60	C 20 08 162 \neq
C 21 08 082 \neq	II	80	80	80	II	160	80	80	C 21 08 162 \neq
Part-No.	CASE LENGTH 120			CASE LENGTH 240			Part-No.		
	Version	Outside dim. in mm			Version	Outside dim. in mm			
		L	W	H		L	W	H	
C 20 08 121 \neq	I	120	80	60	I	240	80	60	C 20 08 241 \neq
C 21 08 121 \neq	I	120	80	80	I	240	80	80	C 21 08 241 \neq
C 20 08 122 \neq	II	120	80	60	II	240	80	60	C 20 08 242 \neq
C 21 08 122 \neq	II	120	80	80	II	240	80	80	C 21 08 242 \neq

ROBUST-BOX, WIDTH 120

SUPPLY

Two case shells (one with groove, one with tongue) with gasket; each with two pairs of cover strips (the base ones with two holes for the rubber feet) in light grey.
Assembly kit.



VERSION I

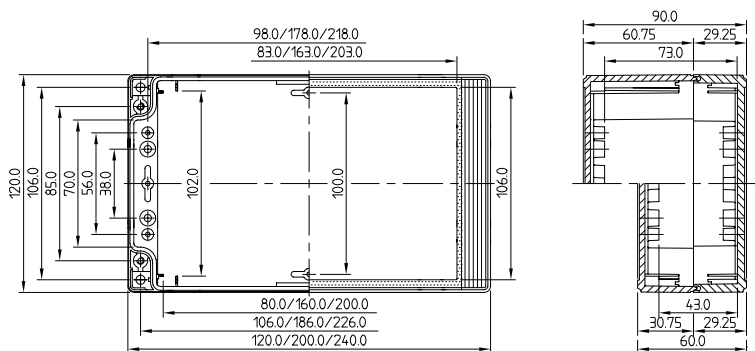
Top and base
ABS (UL 94 HB);
colour: light grey, RAL 7035.

VERSION II

Top and base
polycarbonate (UL 94 HB);
colour: light grey, RAL 7035.

Detailed drawing available on demand in dwg or dxf format.

⊕ ⊕ = Type of screw for case fixing: cross head



(Part-No. with \neq see EMC page 82)

⊕ Z (PZZ)

Part-No.	CASE LENGTH 120				CASE LENGTH 200				Part-No.
	Version	Outside dim. in mm			Version	Outside dim. in mm			
		L	W	H		L	W	H	
C 20 12 121 \neq	I	120	120	60	I	200	120	60	C 20 12 201 \neq
C 21 12 121 \neq	I	120	120	90	I	200	120	90	C 21 12 201 \neq
C 20 12 122 \neq	II	120	120	60	II	200	120	60	C 20 12 202 \neq
C 21 12 122 \neq	II	120	120	90	II	200	120	90	C 21 12 202 \neq
ACCESSORIES (separately available, see pages 89-90.)					CASE LENGTH 240				Part-No.
					Version	Outside dim. in mm			
						L	W	H	
Case feet for desktop applications	Robust hinge				I	240	120	60	C 20 12 241 \neq
Wall-mounting brackets	Security kit				I	240	120	90	C 21 12 241 \neq
Fastening elements to DIN-rails	PCB supports				II	240	120	60	C 20 12 242 \neq
Cover strips	Punched plates with clips to insert PCBs				II	240	120	90	C 21 12 242 \neq
Securing hinge for the cover	DIN-rails								

ROBUST-BOXES

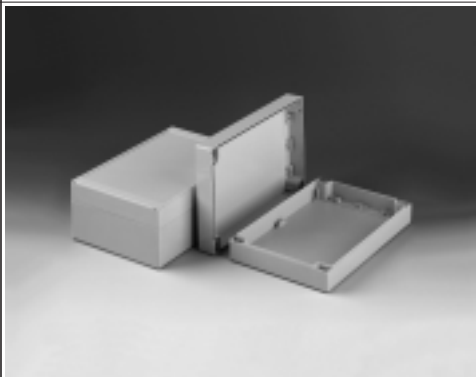
ROBUST-BOXES

VERSION I

Top and base
ABS (UL 94 HB);
colour: light grey, RAL 7035.

VERSION II

Top and base
polycarbonate (UL 94 HB);
colour: light grey, RAL 7035.



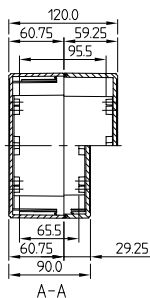
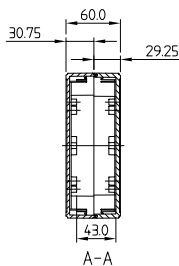
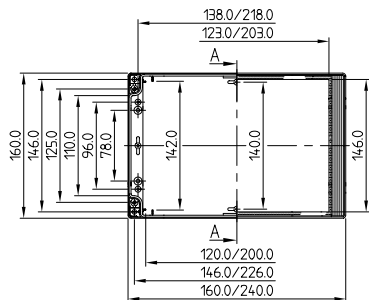
SUPPLY

Two case shells (one with groove, one with tongue) with gasket; each with two pairs of cover strips (the base ones with two holes for the rubber feet) in light grey. Assembly kit.



Detailed drawing available on demand in dwg or dxf format.

⊕ ⊗ = Type of screw for case fixing: cross head



(Part-No. with ♣ see EMC page 82)

⊕ Z (PZZ)

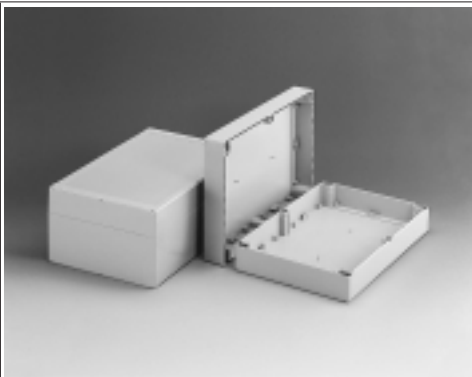
Part-No.	CASE LENGTH 160				CASE LENGTH 240				Part-No.
	Version	Outside dim. in mm			Version	Outside dim. in mm			
		L	W	H		L	W	H	
C 20 16 161 ♣	I	160	160	60	I	240	160	60	C 20 16 241 ♣
C 21 16 161 ♣	I	160	160	90	I	240	160	90	C 21 16 241 ♣
					I	240	160	120	C 24 16 241 ♣
C 20 16 162 ♣	II	160	160	60	II	240	160	60	C 20 16 242 ♣
C 21 16 162 ♣	II	160	160	90	II	240	160	90	C 21 16 242 ♣
					II	240	160	120	C 24 16 242 ♣

ROBUST-BOX, WIDTH 200



SUPPLY

Two case shells (one with groove, one with tongue) with gasket; cover strips (the base ones with holes for the rubber feet) in light grey.
Assembly kit.



VERSION I

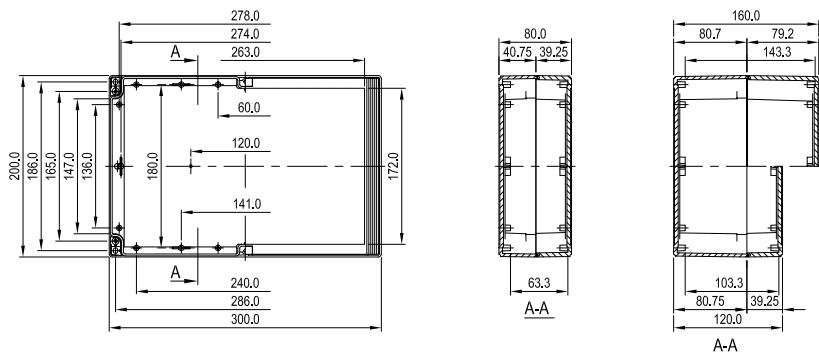
Top and base
ABS (UL 94 HB);
colour: light grey, RAL 7035.

VERSION II

Top and base
polycarbonate (UL 94 HB);
colour: light grey, RAL 7035.

Detailed drawing available on demand in dwg or dxf format.

⊕ ⊗ = Type of screw for case fixing: cross head



⊕ Z (PZZ)

ACCESSORIES (separately available, see pages 89-90)

Case feet for desktop applications Robust hinge
Wall-mounting brackets Security kit
PCB supports

CASE LENGTH 300

Version	Outside dim. in mm		
	L	W	H
I	300	200	80
I	300	200	120
I	300	200	160
II	300	200	80
II	300	200	120
II	300	200	160

Part-No.

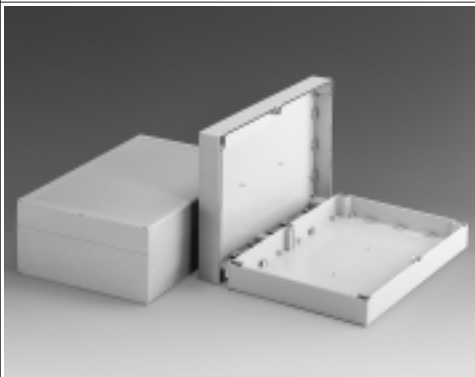
C 21 20 301
C 24 20 301
C 25 20 301
C 21 20 302
C 24 20 302
C 25 20 302

VERSION I

Top and base
ABS (UL 94 HB);
colour: light grey, RAL 7035.

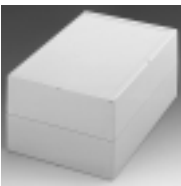
VERSION II

Top and base
polycarbonate (UL 94 HB);
colour: light grey, RAL 7035.



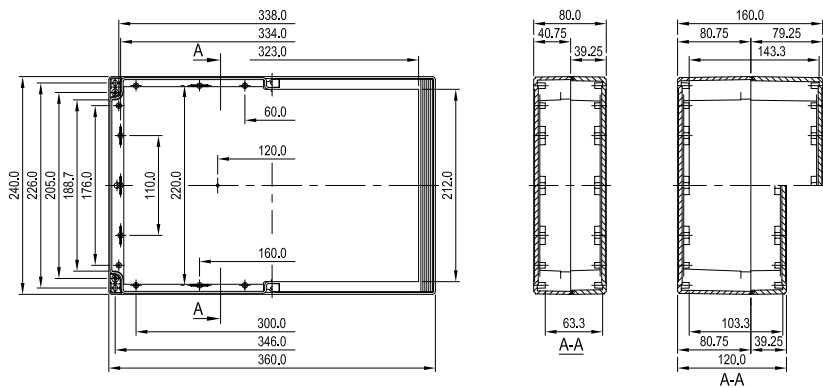
SUPPLY

Two case shells (one with groove, one with tongue) with gasket; cover strips (the base ones with holes for the rubber feet) in light grey. Assembly kit.



Detailed drawing available on demand in dwg or dxf format.

⊕ ⊗ = Type of screw for case fixing: cross head



⊕ Z (PZZ)

Part-No.	CASE LENGTH 360			ACCESSORIES (separately available, see pages 89-90)		
	Version	Outside dim. in mm		Case feet for desktop applications	Robust hinge	
		L	W	H	Wall-mounting brackets	Security kit
C 21 24 361	I	360	240	80	PCB supports	
C 24 24 361	I	360	240	120		
C 25 24 361	I	360	240	160		
C 21 24 362	II	360	240	80		
C 24 24 362	II	360	240	120		
C 25 24 362	II	360	240	160		

ROBUST-BOX ACCESSORIES

<p>When using the case for desktop applications. Because of levelling out the length's tolerance of the cover strips we recommend to glue the case feet of sizes 200x300 and 240x360 mm.</p> <p>Supply: 4 pieces</p>		<p>CASE FEET</p> <p>Part-No. C 22 99 018</p>																																																											
<p>Elements for exterior wall-mounting after assembly of the unit.</p> <p>Supply: 4 pieces, fixing screws</p>		<p>WALL-MOUNTING-BRACKETS</p> <p>Part-No. C 22 99 028</p>																																																											
<p>For fastening the cases to DIN-rails according to DIN EN 50 022 and DIN EN 50 035.</p> <p>Supply: 2 fastening elements, assembly kit</p> <p>DIN-rails see page 90.</p>		<p>FASTENING ELEMENTS TO DIN-RAILS</p> <table border="1"> <thead> <tr> <th>for ROBUST-BOX</th> <th>Part-No.</th> </tr> </thead> <tbody> <tr> <td>width 80</td> <td>C 22 01 088</td> </tr> <tr> <td>width 120</td> <td>C 22 03 128</td> </tr> <tr> <td>width 160</td> <td>C 22 04 168</td> </tr> </tbody> </table>	for ROBUST-BOX	Part-No.	width 80	C 22 01 088	width 120	C 22 03 128	width 160	C 22 04 168																																																			
for ROBUST-BOX	Part-No.																																																												
width 80	C 22 01 088																																																												
width 120	C 22 03 128																																																												
width 160	C 22 04 168																																																												
<p>For securing the cover, e.g. during servicing. Can be fitted to any case side. Cannot be used with PCB mounting kit. Not applicable for sizes 200x300 and 240x360.</p> <p>Supply: 2 securing hinges, fixing screws</p>		<p>SECURING HINGE FOR THE COVER</p> <p>Part-No. C 22 99 031</p>																																																											
<p>Suitable for case 120, 160, 200 and 240 mm length or width. Additional machining (drilling) required.</p> <p>Supply: 2 complete hinges</p>		<p>HINGE</p> <p>Part-No. C 22 99 088</p>																																																											
<p>For use with lead tags.</p> <p>Supply as security kit: 4 plugs, 2 cover strips with holes for the top, standard colour</p> <p>Supply security plug as a single part: 1 plug</p>		<p>SECURITY KIT* / SECURITY PLUG**</p> <table border="1"> <thead> <tr> <th>for ROBUST-BOX</th> <th>Part-No.</th> </tr> </thead> <tbody> <tr> <td>width 80</td> <td>C 22 99 048*</td> </tr> <tr> <td>width 120</td> <td>C 22 99 042*</td> </tr> <tr> <td>width 160</td> <td>C 22 99 046*</td> </tr> <tr> <td>all sizes</td> <td>C 22 99 040**</td> </tr> </tbody> </table>	for ROBUST-BOX	Part-No.	width 80	C 22 99 048*	width 120	C 22 99 042*	width 160	C 22 99 046*	all sizes	C 22 99 040**																																																	
for ROBUST-BOX	Part-No.																																																												
width 80	C 22 99 048*																																																												
width 120	C 22 99 042*																																																												
width 160	C 22 99 046*																																																												
all sizes	C 22 99 040**																																																												
<p>Optionally supplied to the light grey coloured standard versions. Simply clip into top or base. Pair of cover strips with 2 holes to put in rubber feet or security plug.</p> <table border="1"> <thead> <tr> <th rowspan="2">Colour</th> <th colspan="3">Part numbers of the cover strips:</th> </tr> <tr> <th>width 80 mm</th> <th>width 120 mm</th> <th>width 160 mm</th> </tr> </thead> <tbody> <tr> <td>silver grey, RAL 7001</td> <td>C 22 01 082</td> <td>C 22 03 123</td> <td>C 22 04 162</td> </tr> <tr> <td>red, RAL 3020</td> <td>C 22 01 084</td> <td>C 22 03 124</td> <td>C 22 04 164</td> </tr> <tr> <td>yellow, RAL 1023</td> <td>C 22 01 085</td> <td>C 22 03 125</td> <td>C 22 04 165</td> </tr> <tr> <td>green, RAL 6024</td> <td>C 22 01 086</td> <td>C 22 03 126</td> <td>C 22 04 166</td> </tr> <tr> <td>blue, RAL 5017</td> <td>C 22 01 087</td> <td>C 22 03 127</td> <td>C 22 04 167</td> </tr> </tbody> </table>	Colour	Part numbers of the cover strips:			width 80 mm	width 120 mm	width 160 mm	silver grey, RAL 7001	C 22 01 082	C 22 03 123	C 22 04 162	red, RAL 3020	C 22 01 084	C 22 03 124	C 22 04 164	yellow, RAL 1023	C 22 01 085	C 22 03 125	C 22 04 165	green, RAL 6024	C 22 01 086	C 22 03 126	C 22 04 166	blue, RAL 5017	C 22 01 087	C 22 03 127	C 22 04 167	<p>Part numbers of the cover strips:</p> <table border="1"> <thead> <tr> <th rowspan="2">Colour</th> <th colspan="3">Part numbers of the cover strips:</th> </tr> <tr> <th>width 80 mm</th> <th>width 120 mm</th> <th>width 160 mm</th> </tr> </thead> <tbody> <tr> <td>silver grey, RAL 7001</td> <td>C 22 01 082</td> <td>C 22 03 123</td> <td>C 22 04 162</td> </tr> <tr> <td>red, RAL 3020</td> <td>C 22 01 084</td> <td>C 22 03 124</td> <td>C 22 04 164</td> </tr> <tr> <td>yellow, RAL 1023</td> <td>C 22 01 085</td> <td>C 22 03 125</td> <td>C 22 04 165</td> </tr> <tr> <td>green, RAL 6024</td> <td>C 22 01 086</td> <td>C 22 03 126</td> <td>C 22 04 166</td> </tr> <tr> <td>blue, RAL 5017</td> <td>C 22 01 087</td> <td>C 22 03 127</td> <td>C 22 04 167</td> </tr> </tbody> </table>	Colour	Part numbers of the cover strips:			width 80 mm	width 120 mm	width 160 mm	silver grey, RAL 7001	C 22 01 082	C 22 03 123	C 22 04 162	red, RAL 3020	C 22 01 084	C 22 03 124	C 22 04 164	yellow, RAL 1023	C 22 01 085	C 22 03 125	C 22 04 165	green, RAL 6024	C 22 01 086	C 22 03 126	C 22 04 166	blue, RAL 5017	C 22 01 087	C 22 03 127	C 22 04 167	<p>COVER STRIPS</p> <p>Supply: 2 cover strips with holes 2 cover strips without holes</p> <p>Colour</p> <table border="1"> <tbody> <tr> <td>silver grey, RAL 7001</td> </tr> <tr> <td>red, RAL 3020</td> </tr> <tr> <td>yellow, RAL 1023</td> </tr> <tr> <td>green, RAL 6024</td> </tr> <tr> <td>blue, RAL 5017</td> </tr> </tbody> </table>	silver grey, RAL 7001	red, RAL 3020	yellow, RAL 1023	green, RAL 6024	blue, RAL 5017
Colour		Part numbers of the cover strips:																																																											
	width 80 mm	width 120 mm	width 160 mm																																																										
silver grey, RAL 7001	C 22 01 082	C 22 03 123	C 22 04 162																																																										
red, RAL 3020	C 22 01 084	C 22 03 124	C 22 04 164																																																										
yellow, RAL 1023	C 22 01 085	C 22 03 125	C 22 04 165																																																										
green, RAL 6024	C 22 01 086	C 22 03 126	C 22 04 166																																																										
blue, RAL 5017	C 22 01 087	C 22 03 127	C 22 04 167																																																										
Colour	Part numbers of the cover strips:																																																												
	width 80 mm	width 120 mm	width 160 mm																																																										
silver grey, RAL 7001	C 22 01 082	C 22 03 123	C 22 04 162																																																										
red, RAL 3020	C 22 01 084	C 22 03 124	C 22 04 164																																																										
yellow, RAL 1023	C 22 01 085	C 22 03 125	C 22 04 165																																																										
green, RAL 6024	C 22 01 086	C 22 03 126	C 22 04 166																																																										
blue, RAL 5017	C 22 01 087	C 22 03 127	C 22 04 167																																																										
silver grey, RAL 7001																																																													
red, RAL 3020																																																													
yellow, RAL 1023																																																													
green, RAL 6024																																																													
blue, RAL 5017																																																													

ROBUST-BOXES

ROBUST-BOXES

PCB SUPPORT



For mounting pre-assembled PCB units.
Case size 200 x 120 mm will accept Eurocard size (100 x 160 mm).

Supply:
2 supports (Eurocard size and width 120 mm) or 4 supports (all other sizes), fixing kit

Part-No.

C 22 99 058

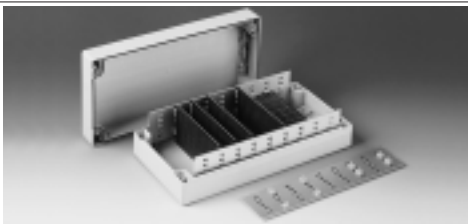
C 22 99 068

for ROBUST-BOX

200 x 120 mm, for Eurocard size and all other cases width 120 mm, 2 pieces

for all other sizes, 4 pieces

PCB MOUNTING KIT



For horizontally or vertically mounting of PCBs.

Supply:
2 punched plates, 12 clips

Part-No.

60 high

80 high

C 22 99 019

C 22 99 029

C 22 99 039

C 22 99 049

C 22 99 059

C 22 99 069

C 22 99 079

C 22 99 089

60 high

90 high

C 22 99 099

C 22 99 049

C 22 99 119

C 22 99 129

C 22 99 139

C 22 99 089

C 22 99 159

C 22 99 069

C 22 99 139

C 22 99 089

for ROBUST-BOX

Rows

Outside dim. in mm

L x W

A B

80 x 80

2

45 50.5 / 70.5

120 x 80

3

85 50.5 / 70.5

160 x 80

5

125 50.5 / 70.5

240 x 80

9

205 50.5 / 70.5

120 x 120

3

85 43 / 70.5

200 x 120

5

165 43 / 73

240 x 120

9

205 43 / 70.5

160 x 160

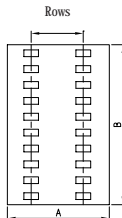
5

125 43 / 70.5

240 x 160

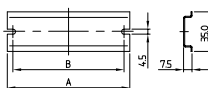
9

205 43 / 70.5

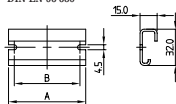


DIN-RAIL

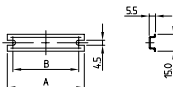
DIN EN 50 022



DIN EN 50 035



DIN EN 50 045



For fixings of clamps in the case.

Supply:
1 DIN-Rail

Part-No.

DIN EN 50 022

DIN EN 50 035

DIN EN 50 045

for ROBUST-BOX

Outside dim. in mm

A

B

C 22 99 419

C 22 99 519

C 22 99 609

length 80 mm

68

58

C 22 99 429

C 22 99 529

C 22 99 619

length 120 mm

108

98

C 22 99 439

C 22 99 539

C 22 99 629

length 160 mm

148

138

C 22 99 449

C 22 99 549

C 22 99 639

length 200 mm

188

178

C 22 99 459

C 22 99 559

C 22 99 649

length 240 mm

228

218

C 22 99 469

C 22 99 569

C 22 99 659

width 120 mm

110

100

C 22 99 669

width 160 mm

150

140