



## YOUR ADVANTAGE

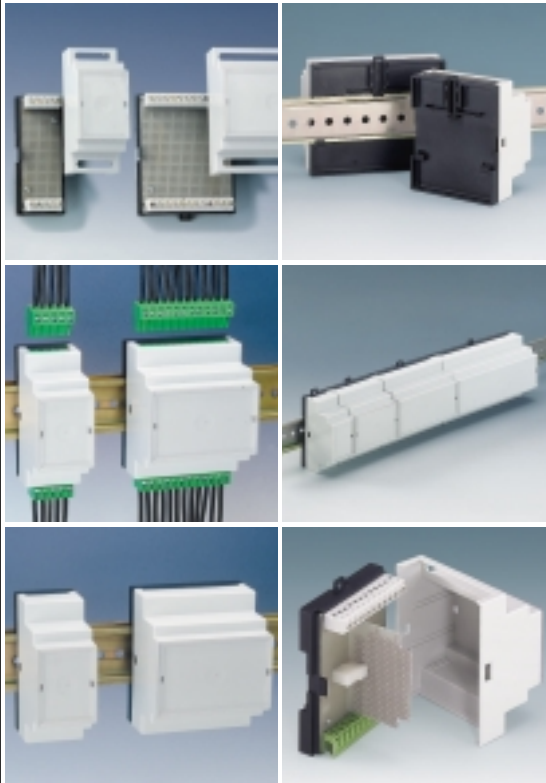
- Simple and quick snap-in assembly on DIN-rails as per DIN EN 50 022.
- 4 sizes following DIN 43 880, unit 1.
- 3 different termination options each for commercial components like
  - terminals
  - PCB plug headers
  - front connectors.
- Base part with fixing towers. 2 additional PCBs each can be plugged onto the main board in vertical and horizontal direction; secure guide in guiding ridges.
- Transparent lid protects display and operation elements.
- Locking clip preassembled in base part.
- Combination of several cases possible.

## STANDARD COLOURS

Base part black, RAL 9005.  
 Top part light grey, RAL 7035.  
 Lid transparent.  
 Please refer to colour chart on page 228.

## MATERIAL

Base part PPO (UL 94 V-0).  
 Top part Polycarbonate (UL 94 V-0).  
 Lid Polycarbonate (UL 94 V-0).  
 Please refer to the specifications on pages 229-231.



## APPLICATIONS

Universal use as installation case. Fully insulated and protected according to VBG4 as well as IEC 529/ DIN VDE 0470-1.  
 Corresponding to the regulations of the machine-building and motorcar industry. Especially for the control techniques.



*NEW:* Ventilation slots on both sides on the top part for components dissipating high heat.

RAILTEC is the special case system for fast locking electronic/electrical assemblies onto DIN-rails.

Three different top parts are available to ensure the right solution for your application.

RAILTEC can be fitted with standard terminals from various manufacturers. These can be accessed, even with the top part fitted, for fitting and detaching the cables and connections. For this, oval cutouts revealing the screw ports and integrated into the top part.

The connector lead avoids wiring faults when devices are exchanged during regular servicing.

A closed version is available for connections at the front only. We can machine the necessary cutouts for you at a favourable rate.

### Hint:

Self-tapping screw  
 $\varnothing$  2.5 mm x 6 mm for PCB fixing in the base part see catalogue page 215.

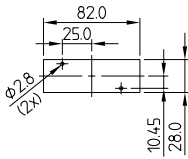
## SERVICE-CENTER

Machining on modern CNC-controlled machines.  
 Lacquering, Silk screen and tamper printing.  
 See pages 221-227.

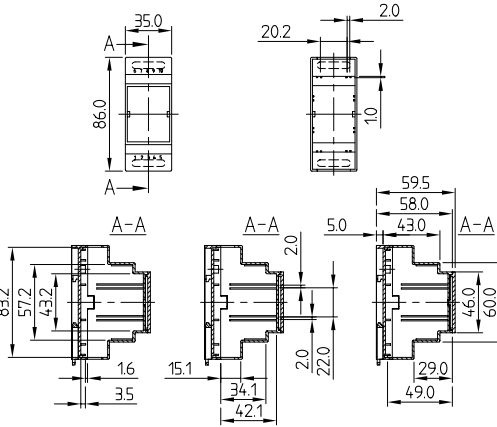


For locking assembly onto DIN-rails according to DIN EN 50 022.

PCB dimensions for case's base part (1.6 mm thick):



Detailed drawing available on demand in dwg, dxf or pdf format.



CASE			Version	Supply
Outside dim. in mm				
W	H	D		
35	86	58	I	1 base part with preassembled locking clip
35	86	58	II	1 top part as per version
35	86	58	III	

#### ACCESSORIES

Article	Version
Lid	transparent, locking, for protecting the display and operation elements

**RAILTEC**  
35 MM WIDTH

#### VERSION I

For terminal blocks 5.0 / 5.08 (10 terminals max.).

#### VERSION II

For plug header (5-poles) blocks 5.0 / 5.08.

#### VERSION III

Closed case, e.g. for front connectors, D-SUB-connectors, etc.

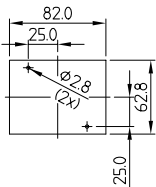
Part-No.	
without ventilation slots	with ventilation slots
B 65 01 111	B 65 01 114
B 65 01 112	B 65 01 115
B 65 01 113	B 65 01 116

B 66 01 100

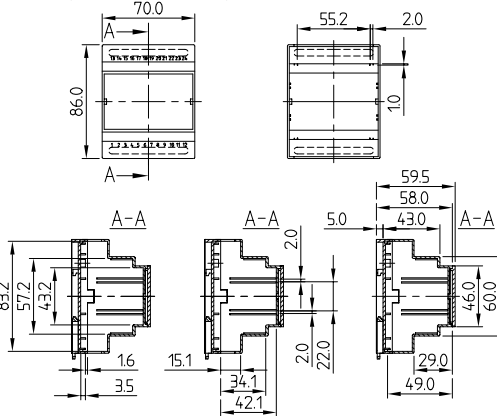


For locking assembly onto DIN-rails according to DIN EN 50 022.

PCB dimensions for case's base part (1.6 mm thick):



Detailed drawing available on demand in dwg, dxf or pdf format.



CASE			Version	Supply
Outside dim. in mm				
W	H	D		
70	86	58	I	1 base part with preassembled locking clip
70	86	58	II	1 top part as per version
70	86	58	III	

#### ACCESSORIES

Article	Version
Lid	transparent, locking, for protecting the display and operation elements

**RAILTEC**  
70 MM WIDTH

#### VERSION I

For terminal blocks 5.0 / 5.08 (24 terminals max.).

#### VERSION II

For plug header (12-poles) blocks 5.0 / 5.08.

#### VERSION III

Closed case, e.g. for front connectors, D-SUB-connectors, etc.

Part-No.	
without ventilation slots	with ventilation slots
B 65 03 111	B 65 03 114
B 65 03 112	B 65 03 115
B 65 03 113	B 65 03 116

B 66 03 100

## RAILTEC 105 MM WIDTH

### VERSION I

For terminal blocks 5.0/5.08  
(36 terminals max.).

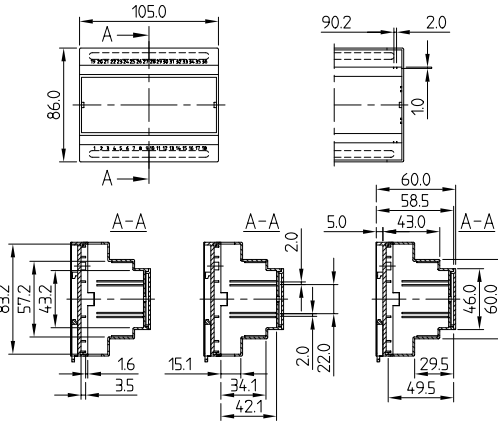
### VERSION II

For plug header  
(2 x 18-poles) blocks  
5.0/5.08.

### VERSION III

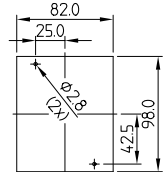
Closed case, e.g. for  
front connectors,  
D-SUB-connectors, etc.

Detailed drawing available on demand in dwg, dxf or pdf format.



For locking assembly onto  
DIN-rails according to  
DIN EN 50 022.

PCB dimensions for case's  
base part (1.6 mm thick):



Part-No.	
without ventilation slots	with ventilation slots
B 65 04 111	B 65 04 114
B 65 04 112	B 65 04 115
B 65 04 113	B 65 04 116

CASE			Version	Supply
Outside dim. in mm				
W	H	D		
105	86	58.5	I	1 base part with preassembled locking clip
105	86	58.5	II	1 top part as per version
105	86	58.5	III	

#### ACCESSORIES

Article	Version
Lid	transparent, locking, for protecting the display and operation elements

B 66 04 100

## RAILTEC 157 MM WIDTH

### VERSION I

For terminal blocks 5.0/5.08  
(52 terminals max.).

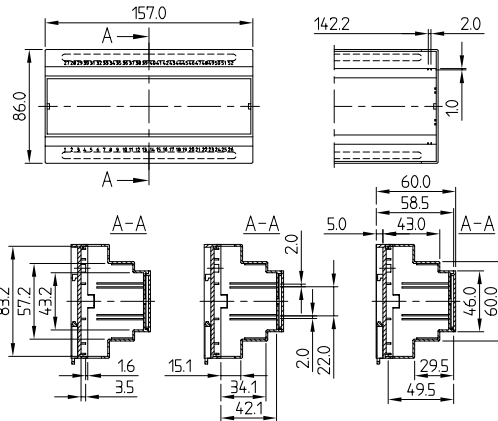
### VERSION II

For plug header  
(4 x 13-poles) blocks  
5.0/5.08.

### VERSION III

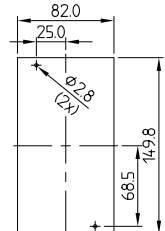
Closed case, e.g. for  
front connectors,  
D-SUB-connectors, etc.

Detailed drawing available on demand in dwg, dxf or pdf format.



For locking assembly onto  
DIN-rails according to  
DIN EN 50 022.

PCB dimensions for case's  
base part (1.6 mm thick):



Part-No.	
without ventilation slots	with ventilation slots
B 65 05 111	B 65 05 114
B 65 05 112	B 65 05 115
B 65 05 113	B 65 05 116

CASE			Version	Supply
Outside dim. in mm				
W	H	D		
157	86	58.5	I	1 base part with preassembled locking clip
157	86	58.5	II	1 top part as per version
157	86	58.5	III	

#### ACCESSORIES

Article	Version
Lid	transparent, locking, for protecting the display and operation elements

B 66 05 100