



Subject to technical modification without notice. Typographical and other errors do not justify any claim for damages.
Stand: 11/99 e Copyright © 1999 OKW Gehäusesysteme KG, Buchen, Germany (<http://www.okw.com>)

Boxes for encapsulating electronic assemblies.

With special cost advantages in cases of series production because potting electronic assemblies in pre-assembled cases is less complicated than casting liquid resin-hardener compounds in metal moulds.

Potted assemblies are protected from shock and temperature, humidity and chemical influences.

Production-limited surface quality.

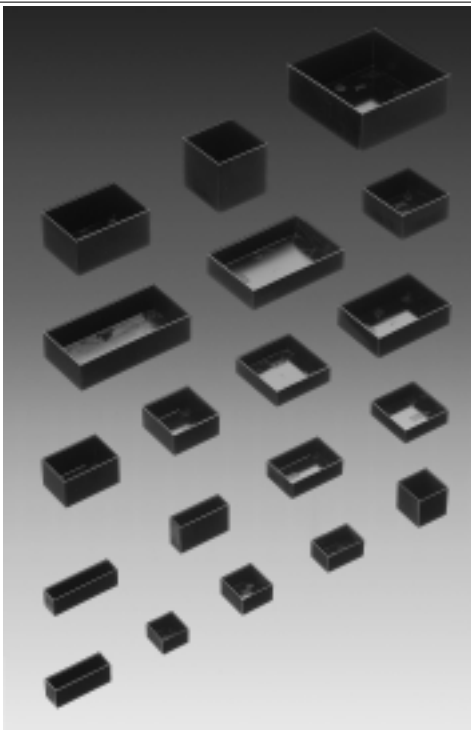
MATERIAL

Duroplastic.

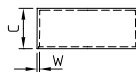
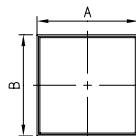
Resistant to deformation and extreme temperatures. Inflexible, therefore not resistant to fracture. Refer to the material specifications on pages 215-217.

STANDARD COLOUR

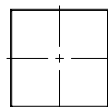
Black.



VERSION I



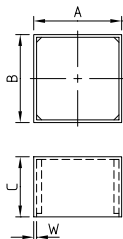
Part-No. Box	Part-No. Lid	Outside dim. in mm			Wall-thickness W (mm)	Version
		A	B	C		
A 80 20 130	-	20	20	13	0.8	I
A 80 25 150	A 81 25 250	25	25	15	0.8	I
A 80 25 251	A 81 25 250	25	25	25	0.8	I
A 80 30 150	A 81 30 200	30	20	15	0.8	I
A 80 40 160	A 81 40 130	40	13	16	0.8	I
A 80 40 250	A 81 40 130	40	13	25	0.8	I
A 80 40 130	A 81 40 400	40	40	13	1.0	I
A 80 40 200	A 81 40 400	40	40	20	1.0	I
A 80 45 150	A 81 45 300	45	30	15	1.0	I
A 80 45 250	A 81 45 300	45	30	25	1.0	I
A 80 50 150	A 81 50 130	50	13	15	1.2	I
A 80 50 160	A 81 50 500	50	50	15	1.2	I
A 80 50 250	A 81 50 500	50	50	25	1.2	I
A 80 50 500	A 81 50 500	50	50	50	1.2	I
A 80 70 200	A 81 70 500	70	50	20	1.3	I
A 80 70 350	A 81 70 500	70	50	35	1.3	I
A 80 90 200	A 81 90 600	90	60	20	1.5	I
A 80 10 250	A 81 10 500	100	50	25	1.5	I
A 80 10 400	A 81 10 100	100	100	40	2.0	I



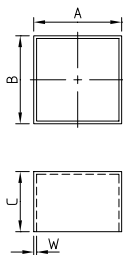
MODIFICATIONS
AS PER
CUSTOMER'S
REQUIREMENTS

See pages 210-213.

VERSION II

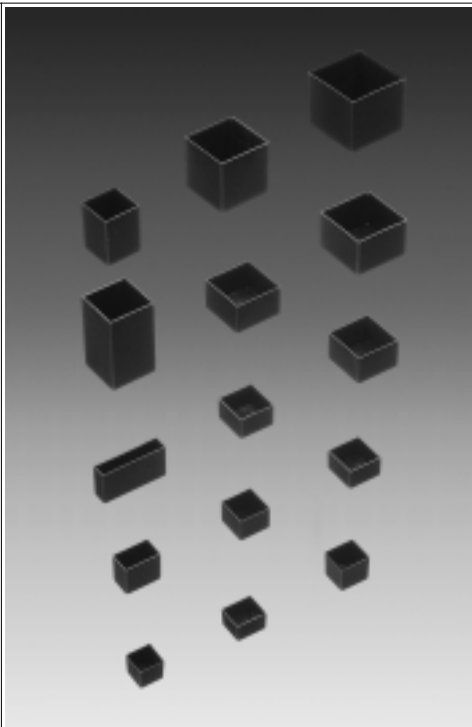


VERSION III



MODIFICATIONS
AS PER
CUSTOMER'S
REQUIREMENTS

See pages 210-213.



MATERIAL

Thermoplastic, polyamide 66.

Good value for money.
Almost unbreakable. With
elastic side panels. There-
fore only partly resistant to
deformation.

Refer to the material speci-
fications on pages 215-217.

STANDARD COLOUR

Black.

Outside dim. in mm			Wall thickness in mm	Version	Part-No.
A	B	C	W		
14	14	11.5	0.8	II	A 80 14 118
17.3	14.8	10.5	0.6	II	A 80 17 108
17.3	14.8	15.2	0.8	II	A 80 17 158
18.4	18.4	13.5	0.6	III	A 80 18 138
20.5	20.5	12.5	0.8	III	A 80 20 128
21	13	17.5	1.0	III	A 80 21 178
22.3	22.3	14	0.8	III	A 80 22 148
26	26	35	1.0	III	A 80 26 358
28.7	28.7	19	1.0	III	A 80 29 198
30	30	50	1.5	III	A 80 30 508
32.3	32.3	20	1.0	III	A 80 32 208
38.8	38.8	26.5	1.2	II	A 80 39 268
38.8	38.8	39	1.2	II	A 80 39 398
40	10	20	1.0	II	A 80 40 208
46	46	40.5	1.0	III	A 80 46 408

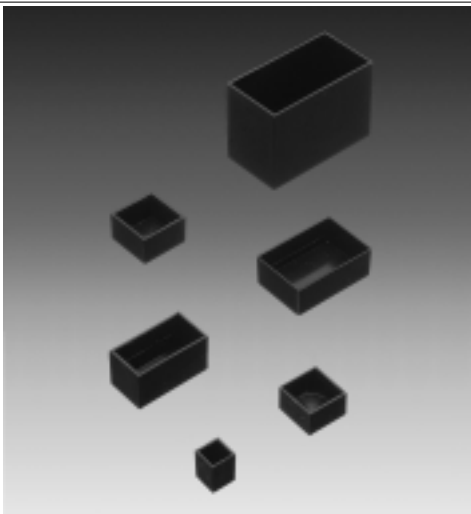
MATERIAL

Thermoplastic, ABS.

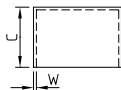
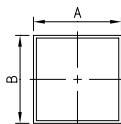
Good value for money.
 Preferably for potting small assemblies. Only partly resistant to temperature.
 Refer to the material specifications on pages 215-217.

STANDARD COLOUR

Black.



VERSION III



Part-No.	Outside dim. in mm			Wall thickness in mm	Version
	A	B	C	W	
A 80 12 159	12	12	15	1.2	III
A 80 21 129	21	21	12	1.2	III
A 80 25 159	25	25	15	1.5	III
A 80 38 209	38	20	20	1.5	III
A 80 45 169	45	30	16	1.2	III
A 80 67 469	67	35.5	46	1.8	III

MODIFICATIONS
 AS PER
 CUSTOMER'S
 REQUIREMENTS

See pages 210-213.