

Subject to technical modification without notice. Typographical and other errors do not justify any claim for damages.
Stand: 02/00 e Copyright © 1999 OKW Gehäusesysteme KG, Buchen, Germany (<http://www.okw.com>)

YOUR
ADVANTAGE

- All plug versions correspond to the standards of the respective countries.
- Live parts, the complete version for the United States as well as sockets in flame-resistant material according to UL 94 V-0.
- Robust and impact-resistant. The ball-thrust hardness test is performed at 125°C.
- The French and German versions are also available with an integrated socket.
- Fastening pillars for the PCB mounting, suitable for self-tapping screws (set with 4 pieces supplied with the case).

STANDARD
COLOURS

Top off-white, RAL 9002.
Base pebble grey, RAL 7032.
Please refer to colour chart on page 214.

MATERIAL

Live parts and the complete version for the United States and the socket versions in flame-resistant material according to UL 94 V-0. Remaining parts are made of flame-resistant polystyrene according to UL 94 V-2. It's possible to mould the top part also in Bayblend (UL 94 V-0 material). Please refer to the specifications on pages 215-217.



APPLICATIONS

Plug cases with direct mains supply. For transforming voltage or for controlling the current supply of other devices, e.g. control circuits, switches, etc.

ASSEMBLY

Case assembly by self-tapping screws. Fastening pillars for PCBs with cored holes of $\varnothing 2.4$ mm – suitable for self-tapping screws for plastics. (Set with 4 pieces supplied with the case.)

Reference: The tensile strength of our self-tapping screws is much greater than threaded bushes.

A practical range of plug cases for many applications.

In modern colour-combination off-white (RAL 9002) – pebble grey (RAL 7032).

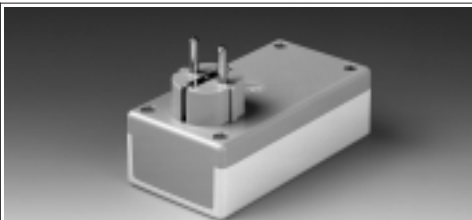
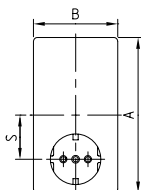
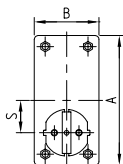
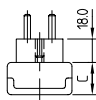
All plug versions correspond to the standards of the respective countries. The French and German versions are also available with an integrated socket.

MODIFICATIONS
AS PER
CUSTOMER'S
REQUIREMENTS

Machining on modern CNC-controlled machines. Lacquering, Silk screen and tampon printing. See pages 210-213.

PLUG CASES D, UK

Detailed drawing available on demand in dwg or dxf format.



⊕ ⊕ = Type of screw for case fixing; cross head

Outside dim. in mm				Plug section acc. to ...	Version	
A	B	C	S			
100	50	25	25	DIN 49 441 R1	I	⊕ Z (FZ2)
100	50	40	25	DIN 49 406	I	⊕ Z (FZ2)
100	50	40	25	DIN 49 441 R1	I	⊕ Z (FZ2)
120	65	40	34	DIN 49 406	I	⊕ Z (FZ1)
120	65	40	34	DIN 49 441 R1	I	⊕ Z (FZ1)
120	65	65	34	DIN 49 441 R1	I	⊕ Z (FZ2)
120	65	55	34	DIN 49 441 R1	II	⊕ Z (FZ2)

GERMAN
VERSION

VERSION I

Without integrated socket.
Alternatively grounded plug acc. to DIN 49 441 R1 or without grounding, acc. to DIN 49 406.

VERSION II

With integrated socket acc. to DIN 49 440 and plug section acc. to DIN 49 441 R1.

Part-No.

A 90 10 465

A 90 11 365

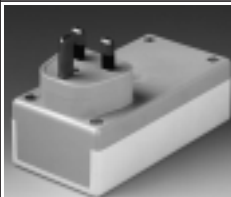
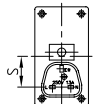
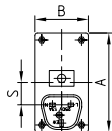
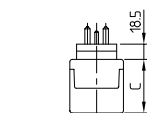
A 90 11 465

A 90 20 365

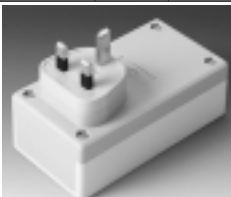
A 90 20 465

A 90 21 465

A 90 22 465



Version I



Version II

⊕ ⊕ = Type of screw for case fixing; cross head

Outside dim. in mm				Plug section acc. to ...	Version	
A	B	C	S			
120	65	40	27	BS 1363	I	⊕ Z (FZ1)
120	65	65	27	BS 1363	I	⊕ Z (FZ2)
120	65	40	38	BS 1363	II	⊕ Z (FZ1)
120	65	65	38	BS 1363	II	⊕ Z (FZ2)

BRITISH
VERSION

Plug acc. to BS 1363.

NEW: Version II with connector part turned by 180°. Especially advantageous when the wall socket is mounted close to the floor.

Part-No.

A 90 20 165

A 90 21 165

A 90 20 965

A 90 21 965

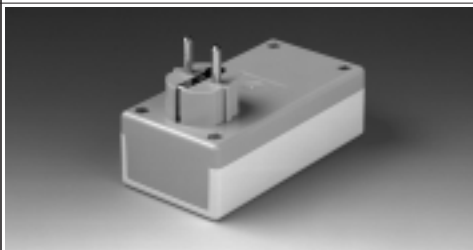
FRENCH VERSION

VERSION I

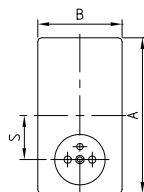
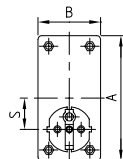
Without integrated socket.
Plug acc. to DIN 49 441 R2.

VERSION II

With integrated socket.
Plug acc. to NF C61-303 /
VI-A / DIN 49 441 R2.



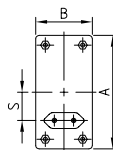
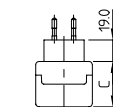
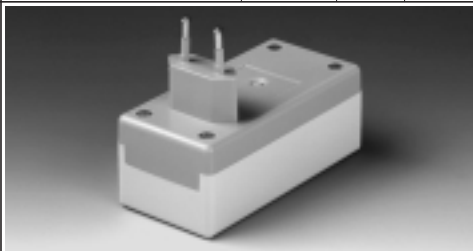
Detailed drawing available on
demand in dwg or dxf format.



Part-No.

	Outside dim. in mm				Plug section acc. to...	Version	
	A	B	C	S			
A 90 10 665	100	50	25	25	DIN 49 441 R2	I	⊕ Z (PZ2)
A 90 11 665	100	50	40	25	DIN 49 441 R2	I	⊕ Z (PZ2)
A 90 20 665	120	65	40	34	DIN 49 441 R2	I	⊕ Z (PZ1)
A 90 21 665	120	65	65	34	DIN 49 441 R2	I	⊕ Z (PZ2)
A 90 23 665	120	65	55	34	DIN 49 441 R2	II	⊕ Z (PZ2)

EURO VERSION



Part-No.

	Outside dim. in mm				Plug section acc. to ...	
	A	B	C	S		
A 90 11 965	100	50	40	25	DIN VDE 0620 part 101	⊕ Z (PZ2)

ADDITIONAL VERSIONS

Part-No.	Version	Outside dim. in mm				Plug section acc. to ...	
		A	B	C	S		
A 90 11 765	Switzerland	100	50	40	25	SEV-S 24507	⊕ Z (PZ2)
A 90 21 765	Switzerland	120	65	65	25	SEV-S 24507	⊕ Z (PZ2)
A 90 11 865	US	100	50	40	29	DIN UL 498	⊕ Z (PZ2)
A 90 20 865	US	120	65	40	29	DIN UL 498	⊕ Z (PZ1)
A 90 21 865	US	120	65	65	29	DIN UL 498	⊕ Z (PZ2)