

Subject to technical modification without notice. Typographical and other errors do not justify any claim for damages.  
Stand: 07/00 e Copyright © 1999 OKW Gehäusesysteme KG, Buchen, Germany (<http://www.okw.com>)

## YOUR ADVANTAGE

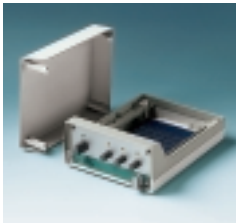
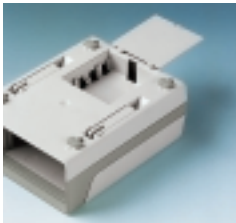
- Easily accessible due to the intricately devised three part assembly of the LUX CASE.
- Tilt feet or stable handle bar permit ergonomic canting for control and favourable viewing angle of LCDs (only size 230). The handle bar can also be used for carrying.
- Vertical and horizontal PCB mounting – a special advantage of the OKW-LUX-CASE range is achieved by the especially designed card guide. The card guide is fitted into the center section and can be moved horizontally.
- The assembled PCBs can be simply inserted from the front without removing the top part. For this, the PCB is assembled with the front panel.
- The LUX-CASE 190 is also suitable for eurocards 100 x 160 mm.
- Aluminium front panels optionally available either to slide-in existing guides or to be fixed by screws.

## STANDARD COLOURS

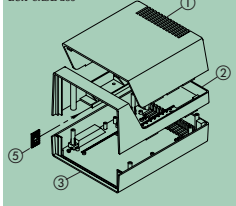
Top and base off-white, RAL 9002, center section pebble grey, RAL 7032. Please refer to colour chart on page 214.

## MATERIAL

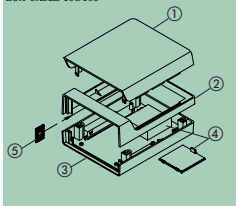
Case: ABS (UL 94 HB). Also available in other materials on request. Please refer to the specifications on pages 215-217.



LUX-CASE 230



LUX-CASES 150/190



## RATIONAL AND VARIABLE FOR INSTALLATION PURPOSES

The special electronic case with three part assembly for desktop use.

Take advantage of easily accessible components which facilitate fast assembly!

Singular housings matching the specific look of your company can be made by choosing your company's colour for the centre moulding.

The cases are available in three different sizes.

## APPLICATIONS

Wide range of applications e.g. measuring devices for medical and laboratory technologies, control devices, peripheral computer equipment or 3 1/2" floppy disks.

- ① Top (Size 230 also with ventilation slots)
- ② Center section
- ③ Base
- ④ Battery compartment and cover (only size 150 and 190, for 4 x 1.5 V mignon cells)
- ⑤ Special-design card-guide

## EMC

Cases marked with ⚡ are available with aluminium metallization on demand. The bonding of base and top shell is mainly performed via the evaporated front panel. See pages 207-209.

## MODIFICATIONS AS PER CUSTOMER'S REQUIREMENTS

Machining on modern CNC-controlled machines. Lacquering. Silk screen and tamper printing. See pages 210-213.

## DESIGN

Three part case design for vertical and horizontal positioning of PCBs.

With horizontally adjustable special-design OKW-card-guide.

The center section is held by the outer halves latching into each other. Alternatively fixing by screws. Tight and solid tongue- and groove-joint.

Front panels either for slide-in or for screw fitting.



## VERSION I

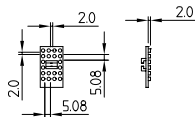
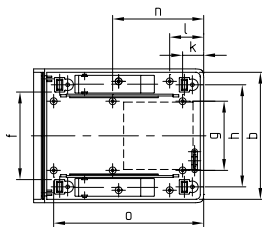
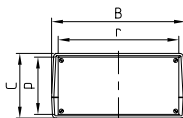
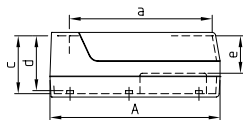
Without battery compartment. Socket for cable strain relief.

## VERSION II

With battery compartment for 4 x 1.5 V mignon cells (AA), accessible from outside. Snap-in place cover.

Detailed drawing available on demand in dwg or dxf format.

⊕ ⊗ = Type of screw for case fixing: cross head



⊕ Z (PZ1)

CASE			Outside dim. in mm						Inside dim. in mm						Spacings in mm						Version	Part-No.
A	B	C	a	b	c	d	e	f	g	h	k	l	m	n	o	p	r					
150	118	57	126	110	51	48	33	76	61	90	18	30	-	80	132	50.5	106.4	I	A 99 12 637			
150	118	57	126	110	51	48	33	76	61	90	18	30	-	80	132	50.5	106.4	II	A 99 12 687			

## ACCESSORIES

Article	Version / Supply	Part-No.
Front panel	for slide-in, matt anodized aluminium, 108.0 x 52.8 x 1.5	A 91 99 121
Front panel	for screw fixing, matt anodized aluminium, 106.3 x 50.4 x 2.0	A 91 99 122
Screw set	4 screws for front panel fixing	A 91 99 004
Screw set	4 screws for case assembly (for additional locking)	A 91 99 003
Screw set	2 screws, strain relief device	A 91 99 005
Set of battery clips	for 4 mignon cells 1.5 V (AA)	A 91 61 001
Card guide	ABS, pebble grey, 1 piece (max. 8 pieces per case)	A 91 99 000
Tilt foot	ABS, off-white, 1 piece	A 03 50 007
Tilt foot	ABS, pebble grey, 1 piece	A 03 50 008

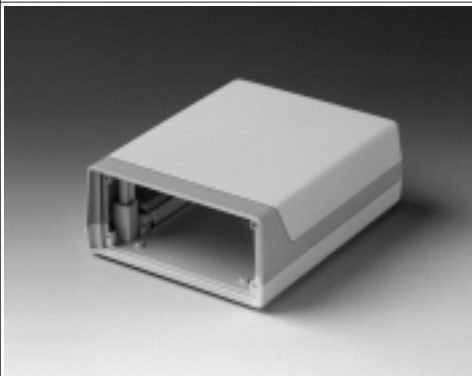


## VERSION I

Without battery compartment. Socket for cable strain relief.

## VERSION II

With battery compartment for 4 x 1.5 V mignon cells (AA), accessible from outside. Snap-in place cover.

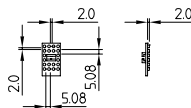
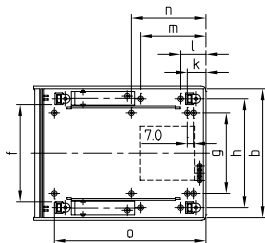
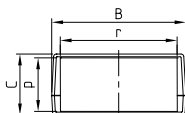
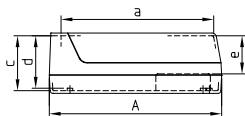


## DESIGN

Three part case design for vertical and horizontal positioning of PCBs. With horizontally adjustable special-design OKW-card guide. The center section is held by the outer halves latching into each other. Alternatively fixing by screws. Tight and solid tongue- and groove-joint. Front panels either for slide-in or for screw fitting.

Detailed drawing available on demand in dwg or dxf format.

⊕ ⊗ = Type of screw for case fixing: cross head



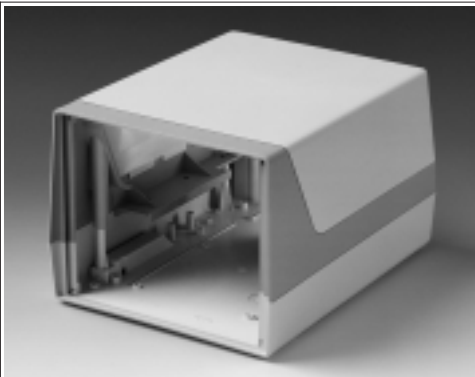
⊕ Z (PZ1)

Part-No.	CASE (Part-No. with ≠ see EMC page 154)										Spacings in mm								Version
	Outside dim. in mm			Inside dim. in mm							g	h	k	l	m	n	o	p	
	A	B	C	a	b	c	d	e	f										
A 91 15 737 #	190	148	67	168	140	61	58	43	106	89	120	19.5	28	72	82	167	60.6	128.8	I
A 99 15 787 #	190	148	67	168	140	61	58	43	106	89	120	19.5	28	72	82	167	60.6	128.8	II

Part-No.	ACCESSORIES	
	Article	Version / Supply
A 91 99 151	Front panel	for slide-in, matt anodized aluminium, 134.0 x 62.5 x 1.5 mm
A 91 99 004	Screw set	4 screws for front panel fixing
A 91 99 003	Screw set	4 screws for case assembly (for additional locking)
A 91 99 005	Screw set	2 screws, strain relief device
A 91 61 001	Set of battery clips	for 4 mignon cells 1.5 V (AA)
A 91 99 000	Card guide	ABS, pebble grey, 1 piece (max. 10 pieces per case)
A 03 50 007	Tilt foot	ABS, off-white, 1 piece
A 03 50 008	Tilt foot	ABS, pebble grey, 1 piece

## DESIGN

Well-devised interlocking of all three case sections with minimum screw fixing.  
Free space for plugs and cable grommets at the rear of the lower case section.  
Cable strain relief devices at the bottom of the case.  
Front panels either for slide-in or for screw fitting.  
Alternatively with or without ventilation openings. Good heat dissipation.



## VERSION I

Without ventilation slots.

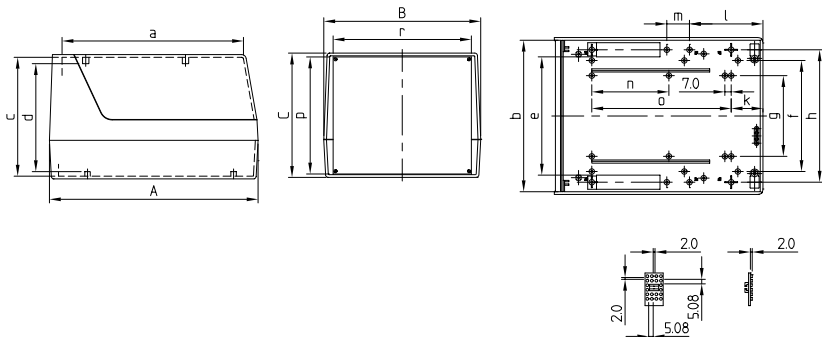
## VERSION II

With ventilation slots.

Versions III and IV additionally with handle see page 158.

Detailed drawing available on demand in dwg or dxf format.

⊕ ⊗ = Type of screw for case fixing: cross head



⊕ Z (PZ1)

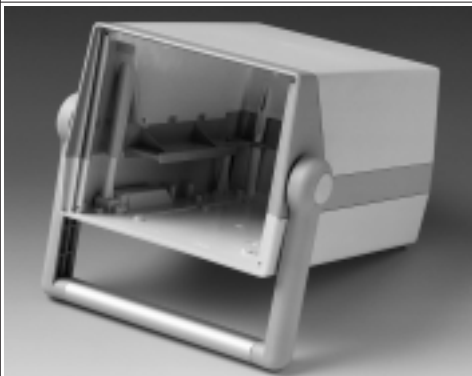
CASE													Version	Part-No.					
Outside dim. in mm			Inside dim. in mm					Spacings in mm											
A	B	C	a	b	c	d	e	f	g	h	k	l	m	n	o	p	r		
230	173	136	200	169	130	118	129	122.4	89	146	35	81	25	85	153.7	128.5	152.3	I	A 99 17 837
230	173	136	200	169	130	118	129	122.4	89	146	35	81	25	85	153.7	128.5	152.3	II	A 99 17 847

ACCESSORIES		Version / Supply	Part-No.
Article			
Front panel	for slide-in, matt anodized aluminium, 131.5 x 158.2 x 1.5 mm		A 91 99 171
Front panel	for screw fixing, matt anodized aluminium, 128.4 x 152.3 x 2.0 mm		A 91 99 172
Screw set	4 screws for front panel		A 91 99 006
Screw set	2 screws, strain relief device		A 91 99 005
Card guide	ABS, pebble grey, 1 piece (max. 10 pieces per case)		A 91 99 000
Tilt foot	ABS, off-white, 1 piece		A 03 50 007
Tilt foot	ABS, pebble grey, 1 piece		A 03 50 008

# LUX CASE 230 WITH HANDLE

The handle enables carrying and convenient canting of the unit.



Colour combination handle:  
Side arms kit pebble grey.  
Push buttons off-white.  
Extruded center section  
matt anodized aluminium.

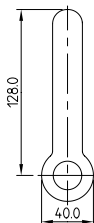
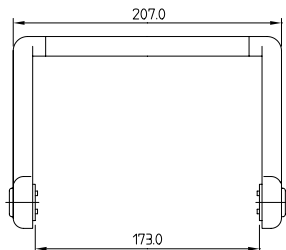
## VERSION III

Without ventilation slots.

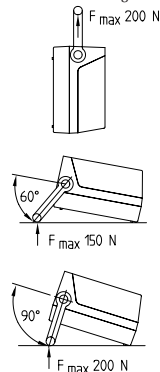
## VERSION IV

With ventilation slots.

Detailed drawing available on demand in dwg or dxf format.



Push button mechanism  
with 30° indexing.



Part-No.	CASE																Version		
	Outside dim. in mm			Inside dim. in mm					Spacings in mm										
	A	B	C	a	b	c	d	e	f	g	h	k	l	m	n	o		p	r
A 99 17 857	230	173	136	200	169	130	118	129	122.4	89	146	35	81	25	85	153.7	128.5	152.3	III
A 99 17 877	230	173	136	200	169	130	118	129	122.4	89	146	35	81	25	85	153.7	128.5	152.3	IV

Part-No.	ACCESSORIES	
	Article	Version / Supply
A 91 99 171	Front panel	for slide-in, matt anodized aluminium, 131.5 x 158.2 x 1.5 mm
A 91 99 172	Front panel	for screw fixing, matt anodized aluminium 128.5 x 152.3 x 2.0 mm
A 91 99 006	Screw set	4 screws for front panel fixing
A 91 99 005	Screw set	2 screws, strain relief device
A 91 99 000	Card guide	ABS, pebble grey, 1 piece (max. 10 pieces per case)
A 03 50 007	Tilt foot	ABS, off-white, 1 piece
A 03 50 008	Tilt foot	ABS, pebble grey, 1 piece