

ERGO-CASE

YOUR ADVANTAGE

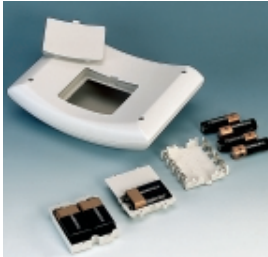
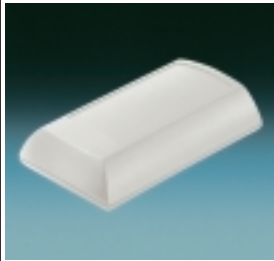
- Ergonomically shaped case designed for carrying on the body.
- Flat surface for individual interfaces on the front side.
- Eyelet for belt/strap available as accessory, easy to fit.
Max. size of the belt/strap: height 35 mm, thickness 3 mm.
- Robust and sealed up to protective class IP 54 when the sealing kit is used.
- Available for operation either with or without batteries. Add-on battery compartments for 4 x AA / 1 x 9V (PP3) and 2 x 9V.
- Can also be used as hand-held, desktop or wall-mounted case.
- Recessed operating area in order to protect the membrane keyboard.
- Available either with flat or with high top part for individual installation configuration.
- Rational case mounting.

STANDARD COLOURS

Off-white, RAL 9002.
Black, RAL 9005.
Fine textured surface.
Please refer to colour chart on page 228.

MATERIAL

ABS (UL 94 HB).
Also available in other materials on request. Please refer to the specifications on pages 229-231.



APPLICATIONS

Mobile data recording and transmission in the fields of medical, laboratory and measuring technology, storage and sales logistics, digital open and closed-loop control technology.



ERGO-CASE

ERGONOMIC, MOBILE, FUNCTIONAL.

The new ERGO CASE – the innovative case for carrying on the body, or for universal use as hand-held, desktop or wall-mounted case.

As "bodycases" they allow the user, for the first time, to carry them comfortably. The ergonomically shaped design not only facilitates operation but also makes it easy to read. This opens up completely new application perspectives, for example in the fields of medicine and control technology.

This series of cases is available in two sizes, each in a flat or in a high version if more space is required.

EMC

On request the case is also available in an aluminised version.
See also pages 226-227.

SERVICE-CENTER

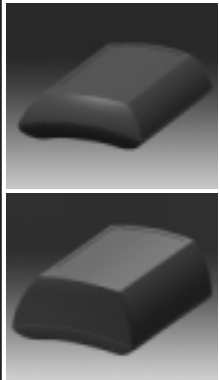
Machining on modern CNC-controlled machines.
Lacquering, Silk screen and tampo printing.
See pages 221-227.

DESIGN

Highly versatile case.
Ergonomically shaped.
Prepared for the installation of a battery compartment for four AA 1.5 V batteries, or one or two flat 9V batteries.
Battery compartment accessible from the outside.
Generously dimensioned recessed operating panel for membrane keyboards and control elements.

ASSEMBLY

The case shells are locked and are additionally secured with 2 self-tapping screws.
The battery compartment lid is locked on.

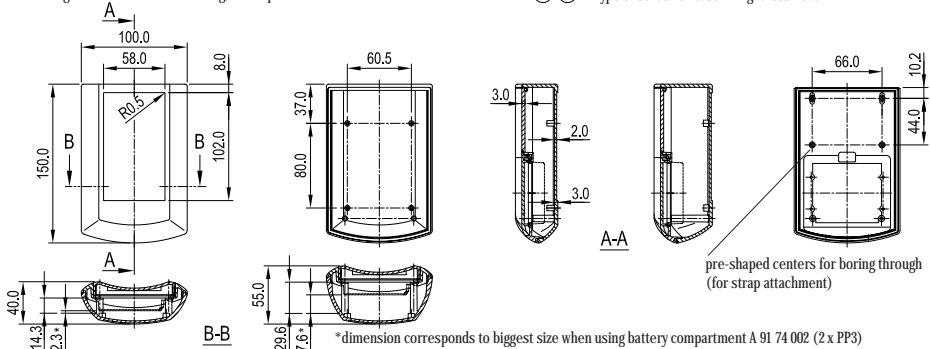


SUPPLY

Top and base part,
battery compartment lid.
Assembly kit with screws for the case and rubber feet.

Detailed drawing available on demand in dwg, dxf or pdf format.

⊕ ⊕ = Type of screw for case fixing: cross head

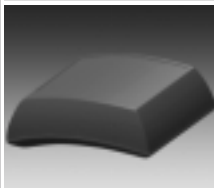
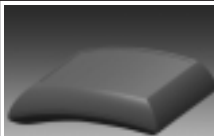


Max. size of PCB: top part 130 x 88 mm (cutouts for pillars not taken into consideration)

⊕ Z (PZ1)

CASE			Part-No.	
Outside dim. in mm			off-white	black
L	W	H		
150	100	40	B 70 10 107	B 70 10 109
150	100	55	B 70 15 107	B 70 15 109
COMBINATION				
		flat top part		
		high top part		
ACCESSORIES				
Article	Colour	Version / Application		
Sealing kit		up to IP 54		
Strap eyelet	volcano	for strap attachment, 2 pieces		
Battery compartment	off-white	for 1 x 9 V flat battery (PP3)		
Set of battery clips*	tin plated	for 1 x 9 V flat battery (PP3)		
Battery compartment	off-white	for 2 x 9 V flat batteries (PP3)		
Set of battery clips*	tin plated	for 2 x 9 V flat batteries (PP3)		
Battery compartment	off-white	for 4 x 1.5 V mignon cells (AA)		
Set of battery clips	tin plated	for 4 x 1.5 V mignon cells (AA)		

* Optional plug-in contact for 1 x 9 V-flat battery (PP3) – see page 219.



DESIGN

Highly versatile case.
Ergonomically shaped.
Prepared for the installation of a battery compartment for four AA 1.5 V batteries, or one or two flat 9V batteries.
Battery compartment accessible from the outside.
Generously dimensioned recessed operating panel for membrane keyboards and control elements.

ASSEMBLY

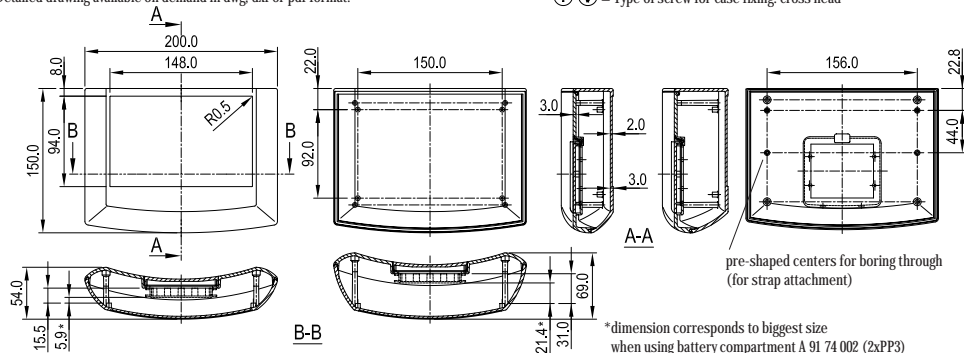
The case shells are secured with 4 self-tapping screws.
The battery compartment lid is locked on.

SUPPLY

Top and base part,
battery compartment lid.
Assembly kit with screws for the case and rubber feet.

Detailed drawing available on demand in dwg, dxf or pdf format.

⊕ ⊕ = Type of screw for case fixing: cross head



Max. size of PCB: top part 130 x 189 mm (cutouts for pillars not taken into consideration)

⊕ Z (PZ1)

Part-No.		CASE			Combination
off-white	black	Outside dim. in mm			
L	W	H			
B 70 20 107	B 70 20 109	150	200	54	flat top part
B 70 25 107	B 70 25 109	150	200	69	high top part
ACCESSORIES					
Article		Colour	Version / Application		
Sealing kit			up to IP 54		
Strap eyelet		volcano	for strap attachment, 2 pieces		
Battery compartment		off-white	for 1 x 9 V flat battery (PP3)		
Set of battery clips*		tin plated	for 1 x 9 V flat battery (PP3)		
Battery compartment		off-white	for 2 x 9 V flat batteries (PP3)		
Set of battery clips*		tin plated	for 2 x 9 V flat batteries (PP3)		
Battery compartment		off-white	for 4 x 1.5 Vignon cells (AA)		
Set of battery clips		tin plated	for 4 x 1.5 Vignon cells (AA)		