



YOUR
ADVANTAGE

- Ergonomic design. A real asset when operating and reading.
- Suitable for numeric keypads and membrane keyboards.
- Prepared for the assembly of eurocards 100 x 160 mm.
- Recessed control area to protect the membrane keyboard.
- Versions with ample space for large assemblies.
- Raised section giving space for easy installation of cable grommets and plug connectors.
- Version with attachment for digital readouts, measuring equipment, encoders etc.



ERGONOMIC AND FUNCTIONAL.

The OKW desk case range covers many different fields of application.

Choose a case that will fully meet your specific requirements concerning tilt and size of the control panel.

We perform low-cost machining of the aluminium front panels according to your specific requirements.

APPLICATIONS

Measuring and control engineering, systems for data collection on the job and on machines, medical and laboratory technologies, industrial control systems, communications equipment, access and security controls, data systems engineering,

EMC

Cases marked with \neq are available with aluminium metallization on demand. A snap-in pin is used for secure bonding. See pages 207-209.

MODIFICATIONS
AS PER
CUSTOMER'S
REQUIREMENTS

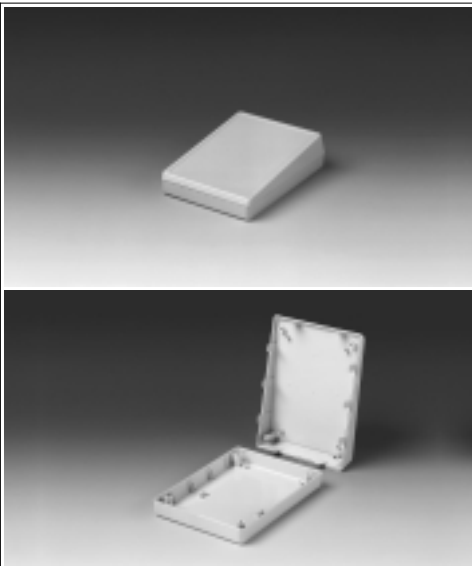
Machining on modern CNC-controlled machines. Lacquering, Silk screen and tampo printing. See pages 210-213.

DESIGN

Two-part case with closed top. Control area recessed by 0.8 mm.

Fastening pillars for PCBs or keyboards in the top and base.

Case parts are assembled by 4 self-tapping screws.



Suitable for numeric keypads and membrane keyboards.

STANDARD COLOURS

Off-white, RAL 9002.

Black, RAL 9005.

Please refer to colour chart on page 214.

SPECIAL COLOURS

Any desired colour.

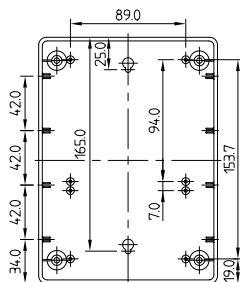
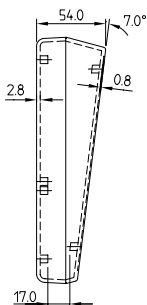
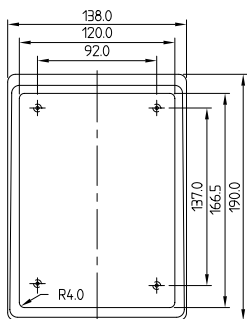
MATERIAL

ABS (UL 94 HB).

Also available in other materials on request. Please refer to the specifications on pages 215-217.

Detailed drawing available on demand in dwg or dxf format.

= Type of screw for case fixing: cross head



Z (PZ1)

CASE (Part-No. with $\#$ see EMC page 104)

Outside dim. in mm

W	D	H	Colour
138	190	54 / 32	off-white
138	190	54 / 32	black

Part-No.

A 05 14 007 $\#$

A 05 14 009 $\#$

Wide range of applications as desk-top cases. Fine textured surface.

STANDARD COLOURS

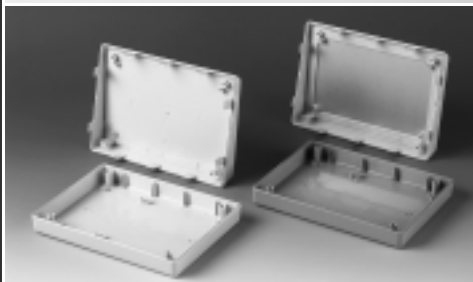
DESK CASE 190:
Off-white, RAL 9002.
Black, RAL 9005.
DESK CASE 190 F / H:
Top part off-white, RAL 9002,
base part pebble grey,
RAL 7032.
Please refer to colour chart on page 214.

SPECIAL COLOURS

Any desired colour.

MATERIAL

ABS (UL 94 HB).
Also available in other materials on request. Please refer to the specifications on pages 215-217.



DESIGN

Two-part case, range of 3 different versions. Screw pillars in the base part and guide ridges for horizontal and vertical mounting of PCBs. Front panel as accessory. Case parts are assembled by 4 self-tapping screws.

VERSION I

DESK CASE 190
With closed top part. Control area recessed by 1.0 mm.

VERSION II

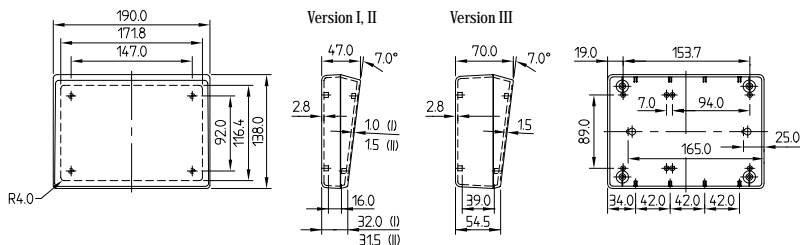
DESK CASE 190 F
Top prepared for front panel mounting. Flat base.

VERSION III

DESK CASE 190 H
Top for front panel mounting. Higher base.

Detailed drawing available on demand in dwg or dxf format.

= Type of screw for case fixing: cross head



(PZ1)

Part-No.	CASE (Part-No. with # see EMC page 104)		
	Desk case	Outside dim. in mm W D H	Colour-combination
A 05 19 007 #	190 (I)	190 138 47 / 32	off-white
A 05 19 009 #		190 138 47 / 32	black
A 90 86 265 #	190 F (II)	190 138 47 / 31.5	off-white / pebble grey
A 90 86 365 #	190 H (III)	190 138 70 / 54.5	off-white / pebble grey
ACCESSORIES			
	Article	Version (for desk cases 190 F and H only)	
A 91 86 001	Front panel	matt anodized aluminium 161.5 x 106 x 1.5 mm (screws supplied with case)	

MODIFICATIONS AS PER CUSTOMER'S REQUIREMENTS

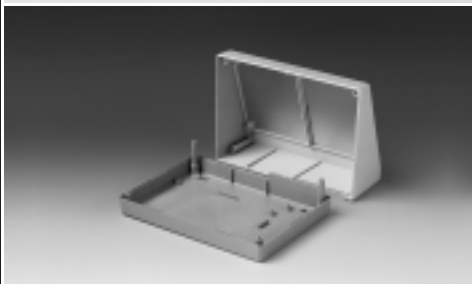
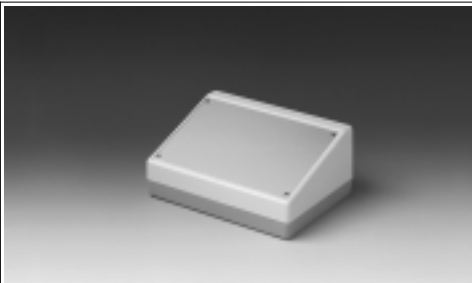
See pages 210-213.

DESIGN

Two-part case. Matt anodized aluminium front panel available as accessory.
Fastening pillars with brass bushes (M3) for mounting PCBs in the base. Raised rear area to accommodate plugs.

ASSEMBLY

Case parts are assembled by 4 threaded screws.



For measuring and control equipment. With space for large assemblies.

STANDARD COLOURS

Top part off-white, RAL 9002, base part pebble grey, RAL 7032.

Please refer to colour chart on page 214.

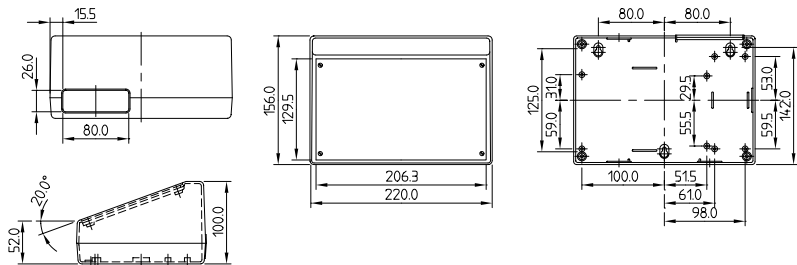
SPECIAL COLOURS

Any desired colour.

MATERIAL

High-impact polystyrene (UL 94 HB). Also available in other materials on request. Please refer to the specifications on pages 215-217.

Detailed drawing available on demand in dwg or dxf format.



MODIFICATIONS AS PER CUSTOMER'S REQUIREMENTS

See pages 210-213.

CASE

Outside dim. in mm			Colour-combination
W	D	H	
220	156	100/52	off-white / pebble grey

ACCESSORIES

Article	Version
Front panel	matt anodized aluminium 205.5 x 129.4 x 1.5 mm (screws supplied with case)

Part-No.

A 90 82 065

A 91 80 001

Flat, modern styling.
Versatile in use.

Particularly applicable for
controlling equipment and
mounting of keyboards.

Version with attachment for
digital readouts, measuring
equipment, encoders etc.

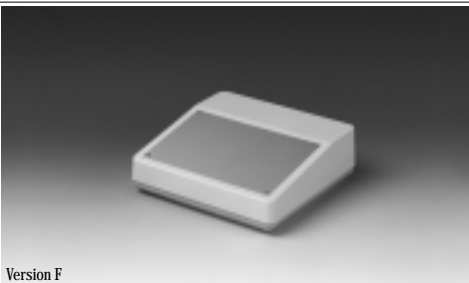
STANDARD COLOURS

Top part off-white, RAL 9002,
base part pebble grey,
RAL 7032.

Please refer to colour chart
on page 214.

MATERIAL

High-impact polystyrene
(UL 94 HB). Also available in
other materials on request.
Please refer to the speci-
fications on pages 215-217.



Version F

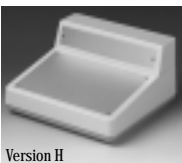


DESIGN

Case with matt anodized
aluminium front panel.
The base part has fastening
pillars with inserts M3 for
the mounting of PCBs.
Raised panel at the rear for
cable grommets and plug
mounting.

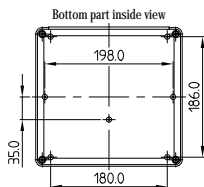
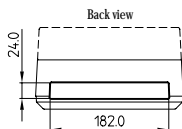
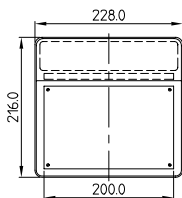
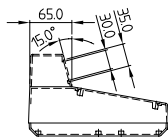
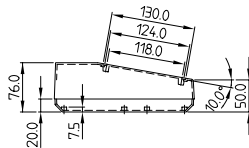
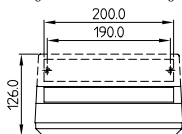
ASSEMBLY

Case parts are assembled by
4 threaded screws. The
attachment will snap into the
top of the assembly.



Version H

Detailed drawing available on demand in dwg or dxf format.



Part-No.	CASE			Colour-combination	
	Version	Outside dim. in mm			
		W	D	H	
A 90 84 165	F	228	216	76 / 50	off-white / pebble grey
A 90 85 165	H	228	216	126 / 50	off-white / pebble grey
ACCESSORIES					
Article		Version			
A 91 84 001	Front panel	matt anodized aluminium 200 x 130 x 1.5 mm (screws supplied with case)			
A 91 85 001	Front panel	matt anodized aluminium 200 x 35 x 1.5 mm (screws supplied with case)			

MODIFICATIONS
AS PER
CUSTOMER'S
REQUIREMENTS

See pages 210-213.