

DATEC-TERMINAL

DATEC-TERMINAL

YOUR ADVANTAGE

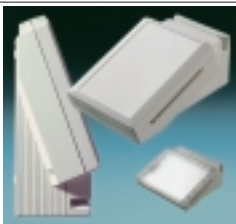
- Standard case for the logging of operational data.
- Insertion possible for standard pocket-size scanners.
- With/without separate terminal section which is easily accessible.
- Ergonomic shape. Operating area inclined by 20°. A real asset when operating and reading.
- The cases are designed to save you time and money by being easy to assemble and service.
- The design is very attractive with all assembly screws being hidden from view.
- Screw pillars for PCB mounting are suitable for mounting eurocards 100 x 160 mm or double eurocard size.
- Recessed control area to protect membrane keyboards.
- Invisible wall-mounting.
- Flat area for machining and cutouts.

STANDARD COLOURS

Cases: off-white, RAL 9002
 Covers: transparent or off-white, RAL 9002
 Lids: off-white, RAL 9002
 Please refer to colour chart on page 214.

MATERIAL

ABS (UL 94 HB).
 Transparent cover in PC.
 Also available in other materials on request. Please refer to the specifications on pages 215-217.



SEALED, ROBUST, ERGONOMIC AND VERSATILE.

OKW case system for table-top units and wall-mounting cases for a multitude of applications.

DATEC-TERMINAL can be easily operated and logging of operational data can be performed quickly. Userfriendly position of the displays.

- DATEC-TERMINAL L and M divided into two sections – the electronics section at the front and the terminal section at the rear.
- DATEC-TERMINAL SL and S without separate terminal section

APPLICATIONS

As DESKTOP UNIT and WALL-MOUNTING CASE:

- systems for data collection on the job and machines
- access and security controls
- input devices
- measuring, controlling, automatic controlling
- communication equipment
- monitoring systems
- data systems engineering
- simultaneous translation systems
- access to data terminals
- heating and air conditioning
- industrial control systems

EMC

Cases marked with \neq are available with aluminium metallization on demand. Secure bonding is only possible when using a cover. See pages 207-209.

MODIFICATIONS AS PER CUSTOMER'S REQUIREMENTS

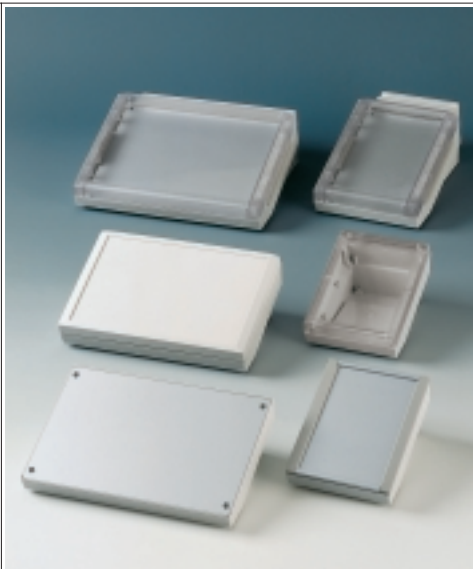
Machining on modern CNC-controlled machines. Lacquering. Silk screen and tamper printing. See pages 210-213.

A special asset is the possibility to manufacture a wall-mounting system as well as a table-top unit for the same application. An identical arrangement of the electronic parts can be maintained. The front plate and/or the cover just has to be turned through 180°.

PROTECTION CLASS UP TO IP 54

DATEC-TERMINAL L and M: Only in combination with cover and closed lid or lid with card slot consisting of several parts.

DATEC-TERMINAL SL and S: Only in combination with cover.



USED AS A TABLE-TOP UNIT

This case series attracts the user with its futuristic, ergonomic shape and ample space to accommodate printed circuit boards in Eurocard-sizes – double and single.

The rubber feet supplied together with the unit guarantee a non-slip position.



USED AS A WALL-MOUNTING SYSTEM

The ergonomically inclined front panel allows the case to be mounted within the operator's reach. Displays and readouts are easily legible for all users involved – be it the mechanical engineer, the operator etc.



In order to prevent unauthorized removal, the case is fixed to the wall-suspension element (accessory) by 2 screws.

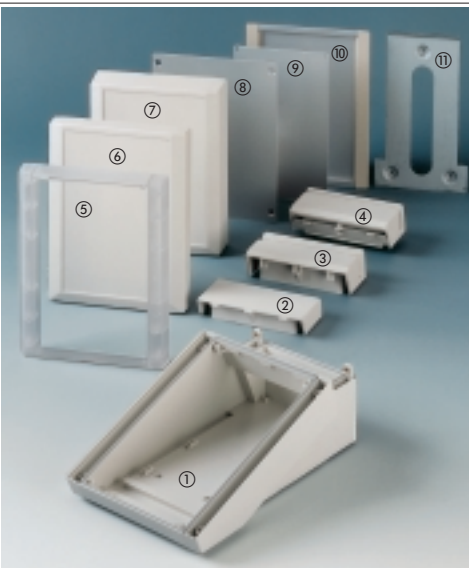
DATEC-TERMINAL L AND M

Outside dimensions in mm

	Length	Width	Height
L	272	302	101
M	272	168	101

- ① Basic housing
- ② Lid closed
- ③ Lid with card slot one piece
- ④ Lid with card slot consisting of several parts
- ⑤ Cover flat, transp.
- ⑥ Cover flat, off-white
- ⑦ Cover high, off-white
- ⑧ Front panel xS
- ⑨ Front panel xH
- ⑩ Profile plate
- ⑪ Wall-suspension element

Please refer to pages 95-99 for article numbers and individual combinations.



DESIGN

Basic case with terminal compartment in three different versions and two sizes for a variety of combinations. Designed to accommodate circuit boards of Eurocard-size. Ergonomically inclined operating area can be used with front panel, profile plate or cover. Combination of cover with front plate H also possible. Version with lid for the terminal compartment available in two closed variants or with slot for scanners (magnetic cards, barcode readers etc.) in customary sizes and from well-known manufacturers. Separate wall-suspension element allows ergonomic use as an wall-mounting system.

DATEC-TERMINAL SL AND S

Outside dimensions in mm

	Length	Width	Height
SL	180	264	86
S	180	130	86

- ① Basic housing
- ⑤ Cover flat, transp.
- ⑥ Cover flat, off-white
- ⑧ Front panel
- ⑩ Profile plate
- ⑪ Wall-suspension element

Please refer to pages 100-102 for article numbers and individual combinations.

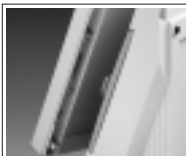


DESIGN

Basic case in two different versions for a variety of combinations. Suitable to accommodate Eurocards. Ergonomically inclined operating area can be used with profile plate, cover or front panel. Separate wall-suspension element allows ergonomic use as an wall-mounting system.

Also suitable for use as BDE-case. Standard pocket-size scanners for chip- or magnetic cards can be assembled laterally or within the cover.

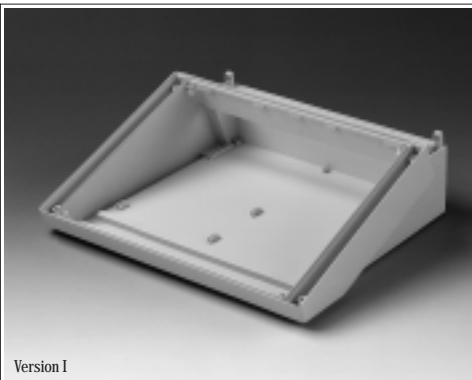
DATEC-TERMINAL L



Version II



Version III



Version I

VERSION I

Basic housing, unmachined.

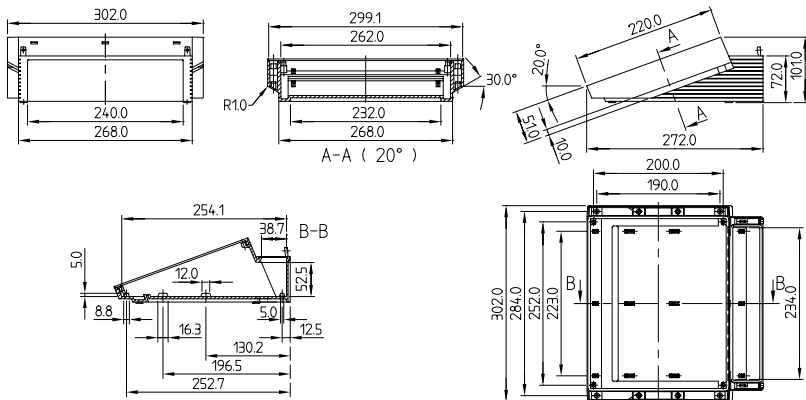
VERSION II

Basic housing, machined for assembly of hinge and quick-action lock.

VERSION III

Same version as II, additionally with machining for assembly of the keylock.

Detailed drawing available on demand in dwg or dxf format.



BASIC HOUSING (Part-No. with \neq see EMC page 92)

Supply

1 Basic housing, 4 self-tapping screws for the PCB fixing,
4 non slip feet, 1 sealing kit

Version	Outside dim. in mm	Length	Width	Height
I	272	302	101	
II	272	302	101	
III	272	302	101	

Part-No.

B 40 30 117 \neq
B 40 30 217 \neq
B 40 30 317 \neq

POSSIBLE COMBINATIONS (Accessories – see pages 97-99 – must be ordered separately)

Version I	Version II	Version III
<ul style="list-style-type: none"> Lid L closed Lid L with slot (1 pc / several parts)* Profile plate L Cover L transparent / off-white locking by 4 screws Front panel LH / LS Support plate, compatible with popular card reading devices Wall-suspension element L 	<ul style="list-style-type: none"> Lid L closed Lid L with slot (1 piece / several parts) Cover L transparent / off-white with hinge and quick-action lock Front panel LH Support plate, compatible with popular card reading devices Wall-suspension element L 	<ul style="list-style-type: none"> Lid L closed Lid L with slot (1 piece / several parts) Cover L transparent / off-white with hinge, quick-action lock and keylock Front panel LH Support plate, compatible with popular card reading devices Wall-suspension element L

* Cannot be used in combination with front panel LS.

VERSION I

Basic housing, unmachined.

VERSION II

Basic housing, machined for assembly of hinge and quick-action lock.

VERSION III

Same version as II, additionally with machining for assembly of the keylock.



Version I

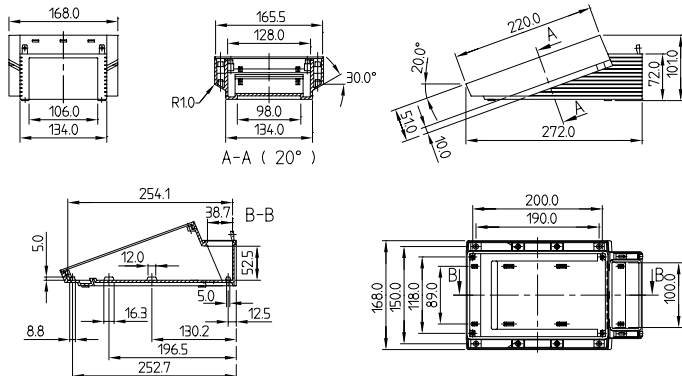


Version II



Version III

Detailed drawing available on demand in dwg or dxf format.



Part-No.

BASIC HOUSING (Part-No. with \neq see EMC page 92)

Version	Outside dim. in mm	Length	Width	Height
I	272	168	101	
II	272	168	101	
III	272	168	101	

Supply

1 Basic housing, 4 self-tapping screws for PCB fixing,
4 non-slip feet, 1 sealing kit

B 40.16.117 \neq

B 40.16.217 \neq

B 40.16.317 \neq

POSSIBLE COMBINATIONS (Accessories – see pages 97-99 – must be ordered separately)

Version I

- Lid M closed
- Lid M with slot (1 pc / several parts)*
- Profile plate M
- Cover M transparent / off-white locking by 4 screws
- Front panel MH / MS
- Support plate, compatible with popular card reading devices
- Wall-suspension element M

Version II

- Lid M closed
- Lid M with slot (1 piece / several parts)
- Cover M transparent / off-white with hinge, quick-action lock and keylock
- Front panel MH
- Support plate, compatible with popular card reading devices
- Wall-suspension element M

Version III

- Lid M, closed
- Lid M with slot (1 piece / several parts)
- Cover M transparent / off-white with hinge, quick-action lock and keylock
- Front panel MH
- Support plate, compatible with popular card reading devices
- Wall-suspension element M

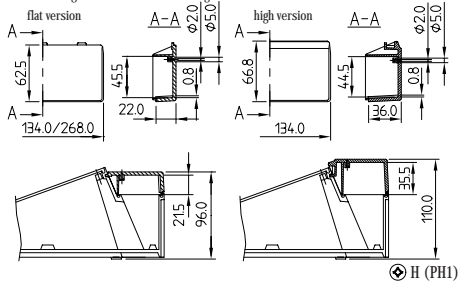
ACCESSORIES FOR COMBINATION

For DATEC-TERMINAL L and M only

OKW



Detailed drawing available on demand in dwg or dxf format.



For basic housing	Version
DATEC-TERMINAL L	flat, ABS, off-white, RAL 9002
DATEC-TERMINAL M	flat, ABS, off-white, RAL 9002
	high, ABS, off-white, RAL 9002

⊕ H (PH1)

LIDS L AND M CLOSED

Universal lid to cover up the terminal compartment (obligatory for IP 54). Suitable for mounting of pocket scanners on a magnetic, inductive and chip-card base.* Machining required.

Supply:
1 lid
2 screws M3

Part-No.

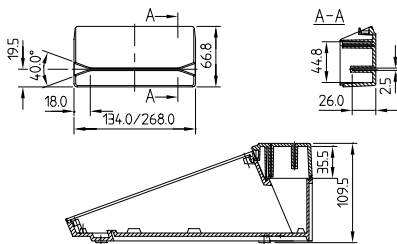
B 40 30 417 †

B 40 16 417 †

B 40 16 457



Detailed drawing available on demand in dwg or dxf format.



IMPORTANT: Cannot be used in combination with front panel LS/MS.

⊕ H (PH1)

For basic housing	Version
DATEC-TERMINAL L	ABS, off-white, RAL 9002
DATEC-TERMINAL M	ABS, off-white, RAL 9002

LIDS L AND M WITH CARD SLOT, ONE PIECE

Special lid to cover up the terminal compartment. Designed for mounting of pull-through reading devices for magnetic cards.* Machining required. (Please refer also to page 99 for prepared support plate to assemble popular scanners.)

Supply:
1 lid, 2 screws

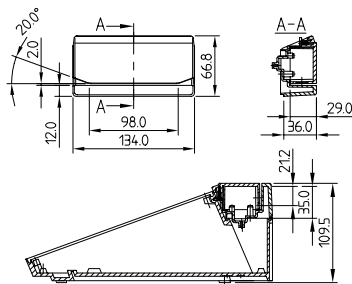
Part-No.

B 40 30 917 †

B 40 16 917 †



Detailed drawing available on demand in dwg or dxf format.



IMPORTANT: Cannot be used in combination with front panel MS.

⊕ H (PH1)

For basic housing	Version
DATEC-TERMINAL M	ABS, off-white, RAL 9002

LID M WITH CARD SLOT, CONSISTING OF SEVERAL PARTS

Special lid to cover up the terminal compartment. Designed for mounting of pull-through reading devices for bar code cards.*

Supply:
1 lid, assembly parts
2 screws M3

Part-No.

B 40 16 017

* Please demand our current list of suitable devices and manufacturers for the desired version of lid or send us a dimensional sheet of the device envisaged by you. On demand, we could also mill the cutouts at a favourable price.

DATEC-TERMINAL

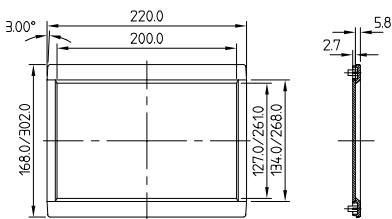
DATEC-TERMINAL

PROFILE PLATES L AND M

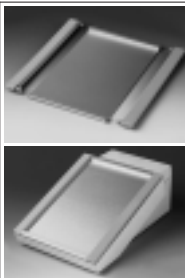
For mounting operating elements of all kinds. Especially designed for the use with membrane keyboards. Recessed area for protecting the operating elements.

Supply:
1 profile plate.
4 screws.
2 cover strips.

Detailed drawing available on demand in dwg or dxf format.



⊕ H (PH1)



Part-No.

B 41 30 126

B 41 16 126

For basic housing

Version

DATEC-TERMINAL L

Profile plate extruded matt anodized aluminium, thickn. 3mm.

DATEC-TERMINAL M

Cover strips in ABS, pebble grey RAL 7032.

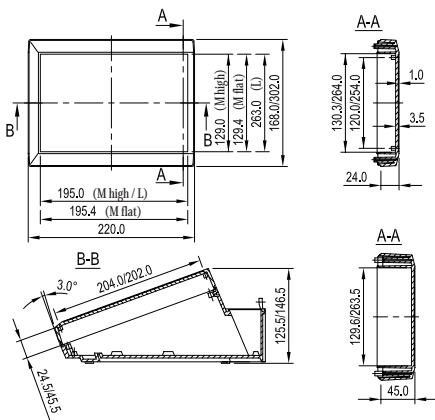
COVERS L AND M

This top cover provides **IP 54** protection in combination with cover and closed lid or lid with card slot consisting of several parts. With screw pillars for PCB fixing.

Important: The opening of versions II and III are on the right side of the wall-mounting case and on the left side of the desktop unit.
(Shown from front view).

Supply:
1 cover acc. to your choice.
Fixing kit

Detailed drawing available on demand in dwg or dxf format.



Cover: ⊕ H (PH1)

Hinge: ⊕ Z (PZ1)



Part-No.

L

M

B 40 30 617 #

B 40 16 617 #

B 40 30 717 #

B 40 16 717 #

B 40 30 817 #

B 40 16 817 #

FLAT VERSION

ABS off-white, RAL 9002

only suitable for version I

fixing by 4 screws

only suitable for version II; set with hinge and quick-action lock

only suitable for version III; set with hinge, quick-action lock and keylock

FLAT VERSION

PC transparent

only suitable for version I

fixing by 4 screws

only suitable for version II; set with hinge and quick-action lock

only suitable for version III; set with hinge, quick-action lock and keylock

Part-No.

L

M

B 40 30 621

B 40 16 621

B 40 30 721

B 40 16 721

B 40 30 821

B 40 16 821

Part-No.

L

M

B 40 30 657

B 40 16 657

B 40 30 757

B 40 16 757

B 40 30 857

B 40 16 857

HIGH VERSION

ABS off-white, RAL 9002

only suitable for version I

fixing by 4 screws

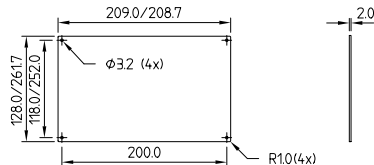
only suitable for version II; set with hinge and quick-action lock

only suitable for version III; set with hinge, quick-action lock and keylock

ACCESSORIES FOR COMBINATION

For DATEC-TERMINAL L and M only

Detailed drawing available on demand in dwg or dxf format.



⊕ Z (PZ1)

Supply:

- 1 front panel
- 4 self-tapping screws
ø 3 mm

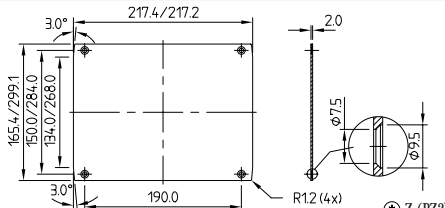
For basic housing	Version
DATEC-TERMINAL L	matt anodized aluminium, 209 x 262 x 2 mm
DATEC-TERMINAL M	matt anodized aluminium, 209 x 128 x 2 mm

Part-No.

B 41 30 116

B 41 16 116

Detailed drawing available on demand in dwg or dxf format.



⊕ Z (PZ2)

Supply:

- 1 front panel
- 4 self-tapping screws
ø 5 mm

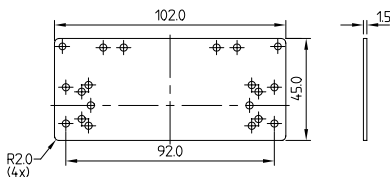
For basic housing	Version
DATEC-TERMINAL L	matt anodized aluminium, 217.4 x 299.4 x 2 mm
DATEC-TERMINAL M	matt anodized aluminium, 217.4 x 165.4 x 2 mm

Part-No.

B 41 30 106

B 41 16 106

Detailed drawing available on demand in dwg or dxf format.



⊕ Z (PZ1)

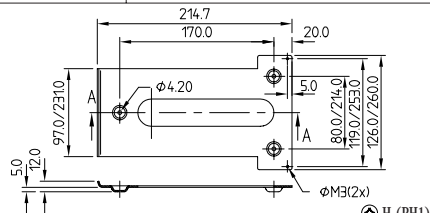
Supply:

- 1 support plate
- 2 self-tapping screws
ø 2.5 mm

For basic housing	Version
DATEC-TERMINAL L and M	Aluminium, 102 x 45 x 1.5 mm

Part-No.

B 41 16 136



⊕ H (PH1)

Supply:

- 1 wall-suspension element
- 2 screws ø 3 mm, M3

For basic housing	Version
DATEC-TERMINAL L	galvanized sheet steel
DATEC-TERMINAL M	galvanized sheet steel

Part-No.

B 41 30 147

B 41 16 147

FRONT PANELS LH AND MH

Used when case is fitted with a cover. Suitable for mounting of all kinds of operating elements under the cover.

FRONT PANELS LS AND MS

Used when case is fitted with a cover. Suitable for the mounting of all kinds of operating elements. When using cover, please use to front plate LH/MH.

SUPPORT PLATE

Specifically designed for internally mounting popular types of card readers and scanners to the one-piece lids with slot.

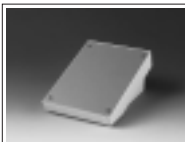
WALL-SUSPENSION ELEMENTS L AND M

For easy and secure fixing of the unit to a wall. Securing by 2 screws in the lateral pocket sections in the terminal compartment. This prevents unauthorized removal.

DATEC-TERMINAL

DATEC-TERMINAL

DATEC-TERMINAL S



With front panel.



With cover, transparent.

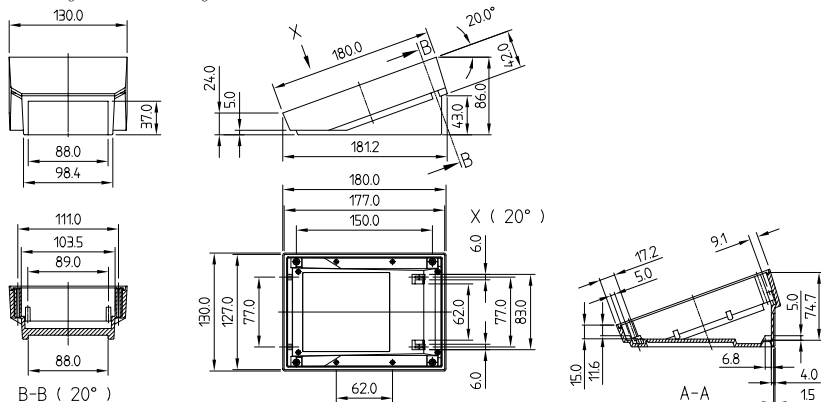


The smallest size of this elegant and practical case range. Mounting for PCBs of eurocard size 100 x 160 mm.

SUPPLY

- 1 basic housing
- 1 sealing kit
- 4 self-tapping screws for the mounting of PCBs
- 4 rubber feet

Detailed drawing available on demand in dwg or dxf format.



BASIC HOUSING (Part-No. with \neq see EMC page 92)

Version	Outside dimensions in mm		
	Length	Width	Height

S	180	130	86
---	-----	-----	----

POSSIBLE COMBINATIONS (Accessories – see page 102 – must be ordered separately)

Version S

- Profile plate S
- Cover S (transparent / off-white, locking by 4 screws)
- Front panel S
- Wall-suspension element S

Part-No.

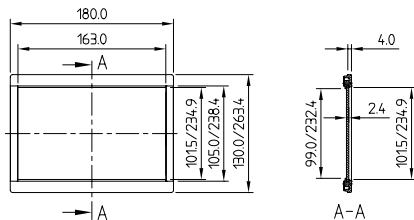
B 40 13 117 \neq

PROFILE PLATE SL AND S

For the mounting of operating elements of all kinds. Especially designed for the use of membrane key-boards. Recessed area for protection of the operating elements.

Part-No.	
SL	S
B 41 26 126	B 41 13 126

Detailed drawing available on demand in dwg or dxf format.



⊕ Z (PZ1)

Profile plate extruded matt anodized aluminium, thickness 2.4 mm. Cover strips in ABS, pebble grey, RAL 7032.

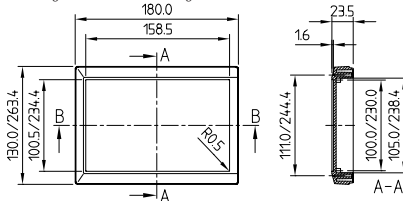
Supply:
1 profile plate
4 screws
2 cover strips

COVER SL AND S

This top cover provides **IP 54** protection and prevents unauthorized access to the electronics.

Part-No.	
SL	S
B 40 26 621	B 40 13 621
B 40 26 617 #	B 40 13 617 #

Detailed drawing available on demand in dwg or dxf format.



Colour
transparent
off-white

⊕ Z (PZ1)

In ABS off-white, RAL 9002 or PC, transparent.

Part-No. with # see EMC page 92.

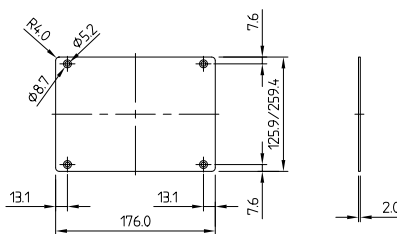
Supply:
1 cover
Fixing kit

FRONT PANEL SL AND S

For mounting of all kinds of operating elements.

Part-No.	
SL	S
B 41 26 106	B 41 13 106

Detailed drawing available on demand in dwg or dxf format.



⊕ Z (PZ2)

Matt anodized aluminium.

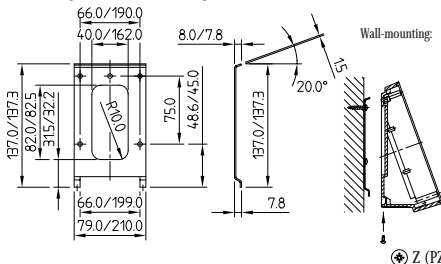
Supply:
1 front panel
4 self-tapping screws ø 4 mm

WALL-SUSPENSION ELEMENT SL AND S

For easy and secure fixing of the unit to a wall. Removal secured by 2 holes in bottom part (machining required).

Part-No.	
SL	S
B 41 26 147	B 41 13 147

Detailed drawing available on demand in dwg or dxf format.



⊕ Z (PZ1)

Galvanized sheet steel.

Supply:
1 wall-suspension element
2 screws