



YOUR ADVANTAGE

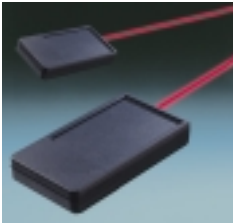
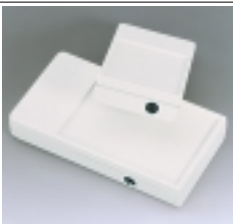
- Plain surfaces for individual machining and interfaces.
- Robust and sealed up to protection class IP 65/IP54.
- Ideal for cable based remote controls or with batteries.
- No mounting necessary for the sealing ring. It's already integrated in the top part. The protection class has been tested corresponding to IEC 529.
- Optionally in infra-red permeable material from stock. Bottom in PMMA (plexiglass®), top part in ABS (L/M). For utmost efficiency the case is equipped with a recessed, polished front face.
- Recessed operating area for the protection of the membrane keyboards.
- Practical belt / pocket clip, please refer to page 24 for part-no.

STANDARD COLOURS

Off-white, RAL 9002.
 Black, RAL 9005.
 Fine textured surface.
 Please refer to colour chart on page 214.

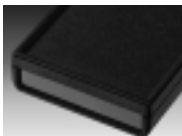
MATERIAL

ABS (UL 94 HB) and PMMA (plexiglass®), permeable to infra-red signals. Also available in other materials on request. Please refer to the specifications on pages 215-217.



APPLICATIONS

Measuring and control technology, remote controls, pulse generator for ultra-sound and infra-red, wireless communication, mobile data recording.



Front area of DATEC-POCKET-BOX L and M, moulded in plexiglass® for infra-red applications with utmost efficiency.

EMC

Cases marked with \neq are available with aluminium metallization on demand. The battery compartments and lids won't be metallized. See also pages 207-209.

SEALED, ROBUST, ERGONOMIC, EXCELLENT DESIGN, QUALITY MOULDING.

Specially designed OKW-case system for pulse generation and pulse reception.

These practical small cases are available in 3 different sizes. Each in 2 standard colours and materials.

The sealing in the top part of the case ensures the high protection class IP 65 for DATEC-POCKET-BOX L or protection class IP 54 for case sizes M and S.

MODIFICATIONS AS PER CUSTOMER'S REQUIREMENTS

Machining on modern CNC-controlled machines. Lacquering. Silk screen and tampo printing. See pages 210-213.

DATEC-POCKET-BOX S

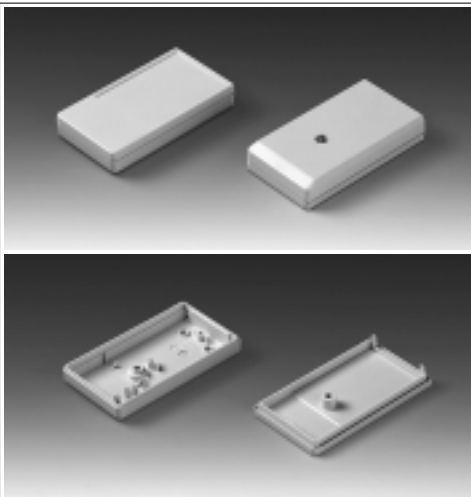
DATEC-POCKET-BOXES

DESIGN

Small pocket-box, robust, with high sealing capacity. Recessed control area for membrane keyboards. Two screw pillars prepared for mounting PCBs in the base. Integrated battery compartment for two 1.5 V lady cells (N). Protection class IP 54 for version with sealing and sealing rings to be used in connection with the screw hole.

ASSEMBLY

Case shells are snapped in at the front and are mounted by means of one threaded screw M3.



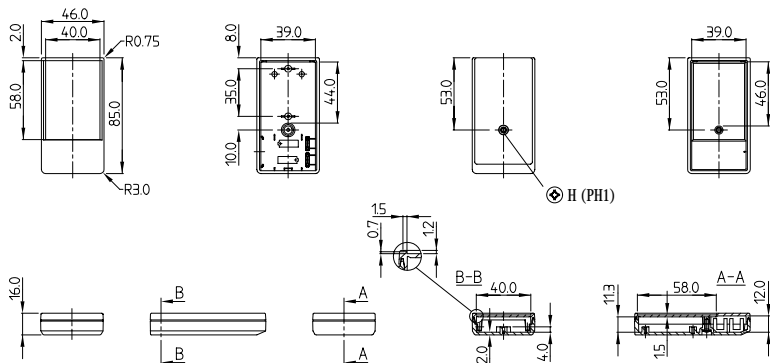
Battery compartment for 2 x 1.5 V lady cells (N)

SUPPLY

Case-top and base.
Assembly kit.

Detailed drawing available on demand in dwg or dxf format.

⊕ ⊗ = Type of screw for case fixing: cross head



Max. size of PCB: base part 39 x 44 mm

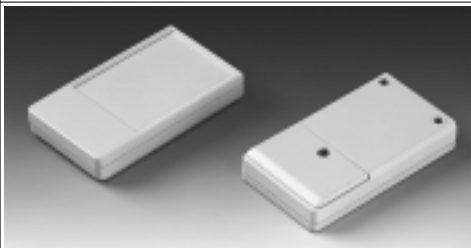
MODIFICATIONS AS PER CUSTOMER'S REQUIREMENTS

See pages 210-213.

CASE Outside dimensions in mm	Colour	Material	Part-No.	
			without sealing	with sealing
85 46 16	off-white	ABS (UL 94 HB)	A 90 70 107	A 90 70 117
85 46 16	black	ABS (UL 94 HB)	A 90 70 109	A 90 70 119
85 46 16	black	PMMA (plexiglass®)	A 90 70 209	A 90 70 219
ACCESSORIES				
Article	Colour	Version / Application		
Set of battery clips	tin plated	for 2 x 1.5 V lady cells (N)	A 91 90 002	



Battery compartment for 2 x 1.5 V micro cells (AAA).



SUPPLY

Case-top and base,
battery compartment lid.
Assembly kit.

DESIGN

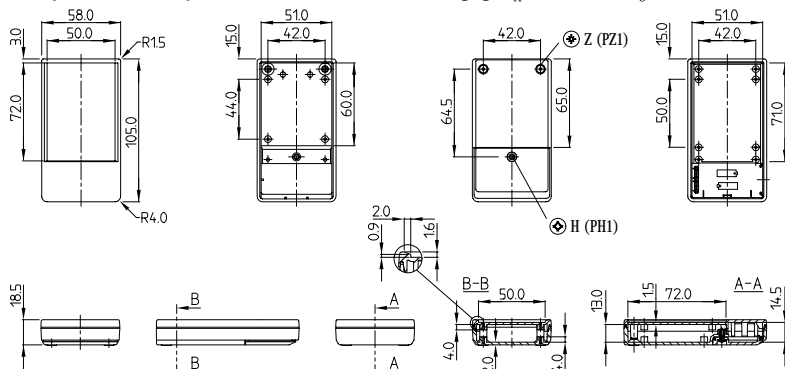
Medium-sized pocket-box, robust, with high sealing capacity. Recessed control area for membrane keyboards. Screw pillars prepared for mounting PCBs in the top and base. Battery compartment for two 1.5 V micro cells (AAA), lid screwed down from the outside. Protection class IP 54 for version with sealing and sealing rings to be used in connection with the screw holes.

ASSEMBLY

Case shells are assembled by means of 4 self-tapping screws. Mounting of the battery compartment lid by threaded screw M3.

Detailed drawing available on demand in dwg or dxf format.

⊕ ⊕ = Type of screw for case fixing; cross head



Max. size of PCB: base part 51 x 60 mm, top part 51 x 72 mm (cutout of pillars not taken into consideration)

Part-No.		CASE		Colour	Material	MODIFICATIONS AS PER CUSTOMER'S REQUIREMENTS See pages 210-213.	
without sealing	with sealing	Outside dimensions in mm					
L	W	H					
A 90 71 107	A 90 71 117	105	58	18.5	off-white		ABS (UL 94 HB)
A 90 71 109	A 90 71 119	105	58	18.5	black		ABS (UL 94 HB)
A 90 71 209	A 90 71 219	105	58	18.5	black		base PMMA (plexiglass®), top ABS
ACCESSORIES							
Article		Colour	Version / Application				
A 91 90 002		tin plated	for 2 x 1.5 V micro cells (AAA)				

DATEC-POCKET-BOX L



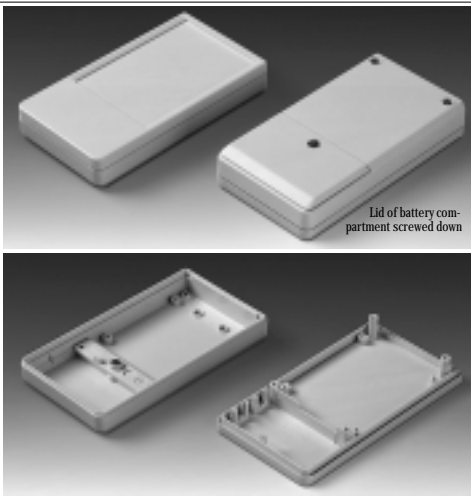
DATEC-POCKET-BOXES

DESIGN

Large pocket-box, robust, with high sealing capacity. Recessed control area for membrane keyboards. Screw pillars prepared for mounting PCBs in the top and base. Battery compartment for two 1.5 V mignon-cells (AA) or one 9 V flat battery (PP3), lid screwed down from the outside. Protection class IP 65 for version with sealing and sealing rings to be used in connection with the screw holes.

ASSEMBLY

Case shells are assembled by means of 4 self-tapping screws, battery compartment lid by threaded screw M3 or locked.



Lid of battery compartment locked.

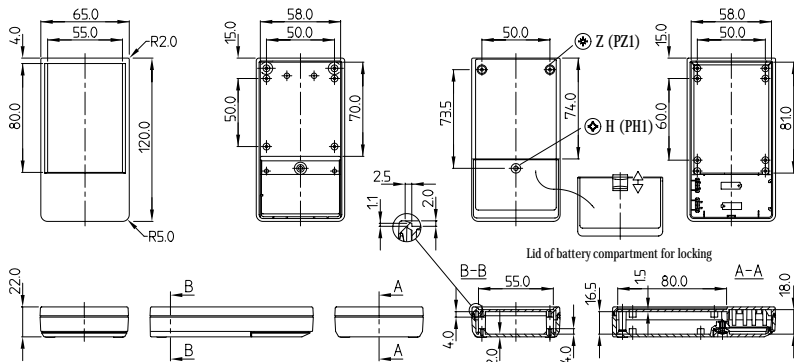
Battery compartment optionally available: screwed down or locked and suitable for 1 x 9 V flat battery (PP3) or 2 x 1.5 V mignon cell (AA).

SUPPLY

Case-top and base, battery compartment lid. Assembly kit.

Detailed drawing available on demand in dwg or dxf format.

⊕ ⊗ = Type of screw for case fixing: cross head



Max. size of PCB: base part 58 x 68 mm, top part 58 x 81 mm (cutout of pillars not taken into consideration)

MODIFICATIONS AS PER CUSTOMER'S REQUIREMENTS

See pages 210-213.

CASE (Part-No. with † see EMC page 20)

Outside dimensions in mm	Colour	Material	Part-No. with locking lid without sealing	Part-No. with screwed down batt. comp. lid			
				without sealing	with sealing		
L 120 W 65 H 22	off-white	ABS (UL 94 HB)	A 90 72 127 †	A 90 72 107 †	A 90 72 117 †		
120	65	22	black	ABS (UL 94 HB)	A 90 72 129 †	A 90 72 109 †	A 90 72 119 †
120	65	22	black	base PMMA, top ABS	A 90 72 229 †	A 90 72 209 †	A 90 72 219 †
ACCESSORIES							
Article	Colour	Version / Application					
Set of battery clips	tin plated	for 2 x 1.5 V mignon cells (AA), battery spacer page 24					
Plug-in contact	blue	for 9 V flat battery (PP3)					
				A 91 90 002			
				A 91 60 003			

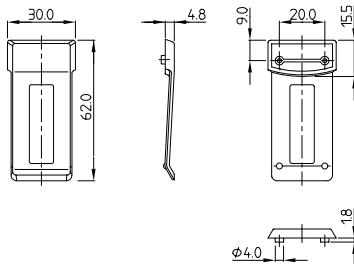
BELT/ POCKET CLIP

Universal clip. All DATEC-POCKET-BOX sizes are provided with premoulded center holes which can be drilled or punched in order to fit the clip.

Supply:

- 1 belt / pocket clip.
- 2 fixing screws \varnothing 2.2 x 6 mm.

No loss of protection class when assembly is performed in the proper way.



Mounting holes:
(Machining –
drilling or punching).
2 x \varnothing 4.2 mm at a center
distance of 20 mm.

Also suitable for other
OKW cases:

- SHELL-TYPE CASES
85 and 110
- FLAT-PACK CASE N 100

Part-No.

A 91 72 107

Article / Colour

Belt/Pocket clip, off-white RAL 9002

A 91 72 109

Belt/Pocket clip, black RAL 9005

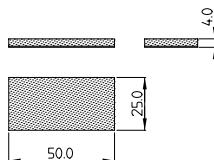
BATTERY SPACER

This spacer, cut 50 x 25 mm, 4 mm thick, is made of PE foam with one-sided adhesive coating. It serves to compensate for the differences in height and to lock the mignon cells (AA) within the battery compartments which can also hold a 9 V flat battery (PP3).

Suitable for DATEC-POCKET-BOX L.

Supply:

- 1 battery spacer.



Also suitable for other OKW cases:

- DATEC-MOBIL-BOX S
- HAND-HELD-BOX N
- LUX CASES 150 and 190
- SHELL-TYPE CASES
Versions III and IV

Part-No.

A 92 50 250

Article / Version

Battery spacer, PE foam with one-sided adhesive coating