

Subject to technical modification without notice. Typographical and other errors do not justify any claim for damages.
Stand: 11/99 e Copyright © 1999 OKW Gehäusesysteme KG, Buchen, Germany (<http://www.okw.com>)

YOUR ADVANTAGE

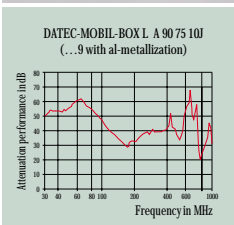
- Compatible with standard LCD modules*.
- Display windows protect the fitted display modules and guarantee a high protection class IP 65 in the display area.
- With and without battery compartment (sizes M and S).
- Recessed operating area in order to protect the membrane keyboards.
- Plain surfaces for interfaces.
- Tilt foot bar as accessory for ergonomic inclined position.

STANDARD COLOURS

Off-white, RAL 9002.
Black, RAL 9005.
Fine textured surface.
Please refer to colour chart on page 214.

MATERIAL

ABS (UL 94 HB).
Also available in other materials on request. Please refer to the specifications on pages 215-217.



APPLICATIONS

Terminals for mobile data recording and transfer. Measuring and control technology. Stock and sales logging. Digital controlling technology. Particularly suitable for harsh environments.



The display window protects the installed display and achieves protection class IP 65 within the display area. The enclosed adhesive foil is used for assembly. The edge is imprinted in off-white or black.

EMC

Cases marked with ⚡ are available with aluminium metallization on demand. By overlapping of bottom and top part, a shielding effect of approx. 50 dB will be achieved (see fig.). The battery compartment A 91 74 004 is available in different versions. See also pages 207-209.

MODIFICATIONS AS PER CUSTOMER'S REQUIREMENTS

Machining on modern CNC-controlled machines. Lacquering. Silk screen and tampon printing. See pages 210-213.

SEALED, ROBUST, MOBILE, CONVINCING DESIGN.

VDE-tested protection class **IP 65**.

Specially designed case system for mobile data recording and data transfer.

The cases are available in three sizes and different versions. The large programme offers best possible flexibility regarding installation components and power supply.

The robust construction also allows its use in harsh environments.

DESIGN

Small hand-held box of attractive design. With integrated battery compartment for two 1.5 V mignon cells (AA) or one 9 V flat battery. Also available without battery compartment. Robust and sealed up to IP 65. Recessed control area to protect the membrane keyboard.

ASSEMBLY

Case parts are assembled by 4 self-tapping screws, lid of battery compartment – if supplied – by 2 threaded screws M3.



VERSION I

Top with closed operating area, recessed by 1.7 mm.

VERSION II

Top with display cutout for 2" -LC-modules with active area up to 45.8 x 17.8 mm.

VERSION III

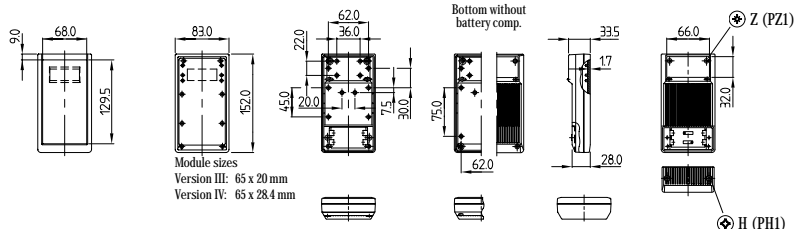
Top with display cutout for miniature-LCDs with 2 lines x 20 characters.

VERSION IV

Top with display cutout for miniature-LCDs with 4 lines x 20 characters.

Detailed drawing available on demand in dwg or dxf format.

⊕ ⊕ = Type of screw for case fixing: cross head



Max. size of PCB: top part 72 x 141 mm, base part without battery compartment 72 x 142 mm or with battery comp. 72 x 104 mm (cutouts for pillars not taken into consideration)

Display window (as accessory)	CASE (Part-No. with # see EMC page 26)				Part-No. with battery compartment		Part-No. without battery compartment			
	L	W	H	Version	Display cutout (mm)	off-white	black	off-white	black	
for version II 	152	83	33.5	I	-	A 90 73 107 #	A 90 73 109 #	A 90 73 117 #	A 90 73 119 #	
	152	83	33.5	II	45.6 x 17.8	A 90 73 207 #	A 90 73 209 #	A 90 73 217 #	A 90 73 219 #	
for version III 	152	83	33.5	III	44.6 x 9.2	A 90 73 307 #	A 90 73 309 #	A 90 73 317 #	A 90 73 319 #	
	152	83	33.5	IV	44.6 x 17.6	A 90 73 407 #	A 90 73 409 #	A 90 73 417 #	A 90 73 419 #	
for version IV 	ACCESSORIES									
	Article		Version / Application							
Sealing kit		for sealing up to IP 65								
Plug-in contact		for 1 x 9 V flat battery (PP3)								
Set of battery clips		tin plated, for 2 x 1.5 V mignon cells (AA)								
Battery spacer		to secure the mignon cells, further description see page 30								
Display window		Set with adhesive foil for prot. class up to IP 65				for version II		for version III		for version IV
		Acrylic glass, transparent, border off-white				A 91 73 007		A 91 73 307		A 91 73 407
		Acrylic glass, transparent, border black				A 91 73 009		A 91 73 309		A 91 73 409
		A 91 73 001								
		A 91 60 003								
		A 91 94 001								
		A 92 50 250								



VERSION I

Top with closed operating area, recessed by 1.7 mm.

VERSION II

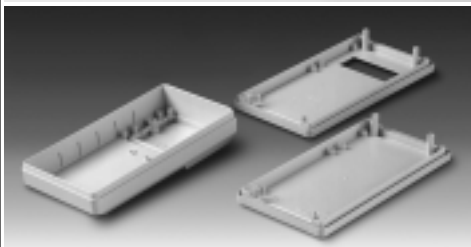
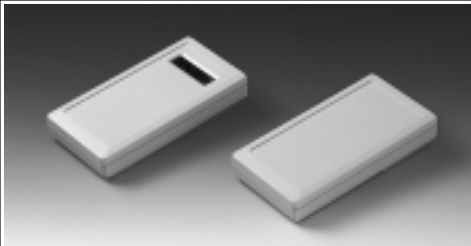
Top with display cutout for standard-LCD modules with 2 lines x 16 characters.

VERSION III

Top with display cutout for compact-LCD modules with 2 lines x 16 characters.

VERSION IV

Top with display cutout for standard-LCD modules with 4 lines x 16 characters.



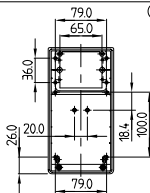
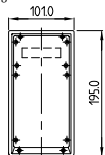
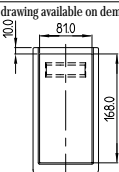
DESIGN

Universally applicable hand-held box of medium size, robust and sealed up to IP 65. Large area for cutouts and openings. Recessed control area for keyboards. Three screw-in battery compartments, designed for four 1.5 V mignon cells (AA), one 9 V flat battery (PP3) or two 9 V flat batteries (2 x PP3) available as accessory sets (fixing screws included). Lid of battery compartment in the base.

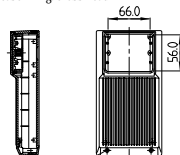
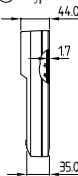
ASSEMBLY

Case parts are assembled by 4 self-tapping screws, battery compartment lid by 2 threaded screws M3.

Detailed drawing available on demand in dwg or dxf format.



⊕ ⊗ = Type of screw for case fixing: cross head



Module sizes

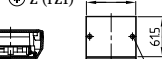
Version II: 84 x 44 mm

Version III: 80 x 36 mm

Version IV: 87 x 60 mm



⊕ Z (PZ1)

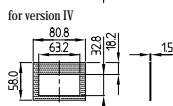
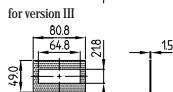
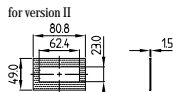


⊕ H (PH1)

Max. size of PCB: base part 90 x 126 mm, top part 90 x 184 mm (cutouts for pillars not taken into consideration)

Part-No.		CASE (Part-No. with † see EMC page 26)				
off-white	black	Outside dimensions in mm		Version	Display cutout (mm)	
L	W	H				
A 90 74 107 †	A 90 74 109 †	195	101	44	I	-
A 90 74 207 †	A 90 74 209 †	195	101	44	II	60 x 15
A 90 74 307 †	A 90 74 309 †	195	101	44	III	62 x 13
A 90 74 407 †	A 90 74 409 †	195	101	44	IV	60.2 x 24.2
ACCESSORIES						
Article	Colour	Version / Application				
Sealing kit	grey	for sealing up to IP 65				
Battery compartment	off-white	for 1 x 9 V flat battery (PP3), ABS				
Set of battery clips*	tin plated	for 1 x 9 V flat battery (PP3)				
Battery compartment	off-white	for 2 x 9 V flat batteries (PP3), ABS				
Set of battery clips*	tin plated	for 2 x 9 V flat batteries (PP3)				
Battery compartment	off-white	for 4 x 1.5 V mignon cells (AA), ABS				
Set of battery clips	tin plated	for 4 x 1.5 V mignon cells (AA)				
for Version II	for Version III	for Version IV	Display window (Set with adhesive foil for protection class up to IP 65)			
A 91 74 007	A 91 74 307	A 91 74 407	acrylic glass, transparent, border off-white			
A 91 74 009	A 91 74 309	A 91 74 409	acrylic glass, transparent, border black			

Display windows (accessories)



DATEC-MOBIL-BOX L



DATEC-MOBIL-BOXES

DESIGN

Hand-held box with wide range of applications, robust and sealed up to IP 65.

Prepared for mounting PCBs of Eurocard size. Large control area for membrane key-boards and controls. Integrated and sealed battery compartment, accessible from the outside, for four 1.5 V mignon cells (AA) or one 9 V flat battery (PP3).

ASSEMBLY

Case parts are assembled by 4 self-tapping screws, battery compartment lid by 2 threaded screws M3.



VERSION I

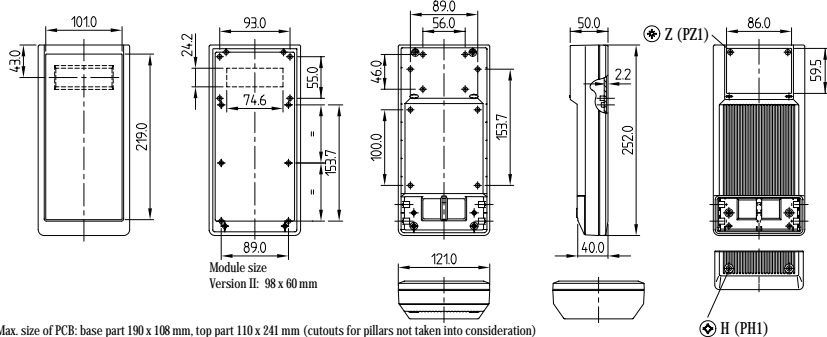
Top with closed operating area, recessed by 2.2 mm.

VERSION II

Top with display cutout for LCD modules of 20 characters x 4 lines.

Detailed drawing available on demand in dwg or dxf format.

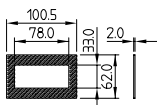
⊕ = Type of screw for case fixing: cross head



Max. size of PCB: base part 190 x 108 mm, top part 110 x 241 mm (cutouts for pillars not taken into consideration)

Display window (accessory)

for Version II



CASE (Part-No. with # see EMC page 26)

Outside dimensions in mm			Colour	Version
L	W	H		
252	121	50	off-white	I
252	121	50	off-white	II
252	121	50	black	I
252	121	50	black	II

ACCESSORIES

Article	Colour	Version / Application
Sealing kit	grey	up to IP 65
Plug-in contact	blue	for 1 x 9 V flat battery (PP3)
Set of battery clips	tin plated	for 4 x 1.5 V mignon cells (AA)
Display window (Set with adhesive foil IP 65)	transparent	acrylic glass, border off-white
	transparent	acrylic glass, border black

Part-No.

A 90 75 107 #

A 90 75 207 #

A 90 75 109 #

A 90 75 209 #

A 91 75 001

A 91 60 003

A 91 61 002

A 91 75 007

A 91 75 009

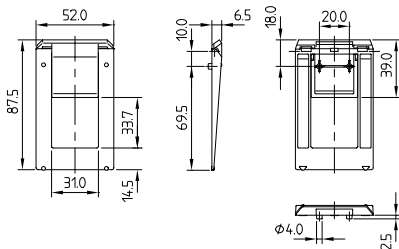
TILT FOOT BAR

Specially applicable tilt foot bar to improve the viewing angle. Premoulded center holes have been provided to facilitate the mounting to the DATEC-MOBIL-BOXES M and S. These knockouts can subsequently be drilled or punched.

Supply:

- 1 tilt foot bar.
- 2 fixing screws $\varnothing 2.2 \times 6$ mm.

When properly mounted, the protection class of the case will be maintained!



Mounting holes:
(Machining –
drilling or punching).
2x $\varnothing 4.2$ mm at a center
distance of 20 mm.

Part-No.

A 92 50 907

A 92 50 909

A 92 07 150

Article / Version

Tilt foot bar, off-white RAL 9002

Tilt foot bar, black RAL 9005

Clear non-slip pads, 2 pieces $\varnothing 6.5$ mm

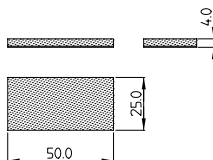
BATTERY SPACER

This spacer, cut 50 x 25 mm, 4 mm thick, is made of PE foam with one-sided adhesive coating. It serves to compensate for the differences in height and to secure the mignon cells (AA) within the battery compartments, which can also hold a 9 V flat battery (PP3).

Suitable for DATEC-MOBIL-BOX S.

Supply:

- 1 battery spacer.



Also suitable for other OKW-cases:

- DATEC-POCKET-BOX L
- HAND-HELD-BOX N
- LUX-CASES 150 and 190
- SHELL-TYPE CASES Versions III and IV

Part-No.

A 92 50 250

Article / Version

Battery spacer, PE foam with one-sided adhesive coating