



YOUR ADVANTAGE

- Easy to use with a small hand grip area.
- Compatible with standard graphic displays*.
- Display windows protect the fitted display modules and guarantee a high protection class IP 65 in the display area.
- Optional battery compartment for 4 x AA / 1 x PP3.
- Lid of battery compartment optionally with latch and / or fixed by screws.
- Recessed operating area for the protection of the membrane keyboards.
- Robust and sealed up to IP 65.

STANDARD COLOURS

Off-white, RAL 9002.
Black, RAL 9005.
Fine textured surface.
Please refer to colour chart page 214.

MATERIAL

ABS (UL 94 HB).
On demand also in other materials. Please refer to the specifications pages 215-217.

Order data see pages 34-35.



GRAPHICS AND POWER

OKW developed the DATEC-CONTROL-series especially for the installation of graphic displays.

DATEC-CONTROL S

With its width of only 72 mm is especially handy. The generous display area offers enough space for display modules in many different versions.

NEW: DATEC-CONTROL XS (see pages 33 following)

APPLICATIONS

Terminals for mobile data collection and transfer via modem, ISDN or infrared-technology. Measuring and control technology. Digital control technology.

EMC

Cases marked with \neq are available with aluminium metallization on demand. By overleaping of bottom and top part a good shielding effect will be achieved. The contact to the end cover (M/L) is limited to separate places.
See also pages 207-209.

MODIFICATIONS AS PER CUSTOMER'S REQUIREMENTS

Machining on modern CNC-controlled machines. Lacquering. Silk screen and tamper printing.
See pages 210-213.

APPLICATIONS

Ideal for all applications which need graphic displays. The changeable battery compartments support devices for mobile data collection with high current load. For the following applications: Data transfer via modem, ISDN or infrared, use of memory cards as flash-memories and changeable hard disks, etc. there is, furthermore, the possibility to mount a PCMCIA-slot under the battery compartment on the circuit board.



The battery compartment (accessory) is prepared for 5 mignon cells 1.5 V (AA) and can be easily changed. Simply remove the end cover and unplug the compartment from the holder.



DATEC-CONTROL M / L

offer utmost comfort for the mobile data collection and transfer:

Space for a 5th mignon cell, a PCMCIA-card and interfaces. All displays* which fit into a circle of 105 mm and have a height of max. 15 mm, can be installed.

YOUR ADVANTAGE

- With generous display and operating area.
- Compatible with standard graphic modules.
- Display windows protect the fitted display modules and achieve protection class IP 54 in the display area.
- Optional battery compartment for up to 5 x AA, plug-in, easy to change.
- Space for PCMCIA card, protected mounting – easy access.
- The station can be used for desktop or wall-mounting applications. It offers space for mounting a battery compartment and contains the supports for the contacts, e.g. for mobile data transfer.
- Recessed operating area for the protection of the membrane keyboards.
- Push-on end cover can be permanently fixed if needed.
- Sealed up to IP 54.

STANDARD COLOURS

Off-white, RAL 9002.
Black, RAL 9005.
Fine textured surface.
Please refer to colour chart page 214.

MATERIAL

ABS (UL 94 HB).
On demand also in other materials. Please refer to the specifications pages 215-217.

Order data see pages 36-40.

* Contact addresses of suitable standard display modules on demand.

New case size with super small handle area and ideal distribution of weights: the battery compartment is placed in the handle area, the display modules' place is on the top.

With this you will receive a maximum amount of ergonomics.

VERSION I

With closed operation area, recess 1.6 mm deep.

VERSION II

With maximum sized cutout for display modules.



DESIGN

Hand held case easy to use with a small hand grip area and with generous display area prepared for mounting industry standard LCD.

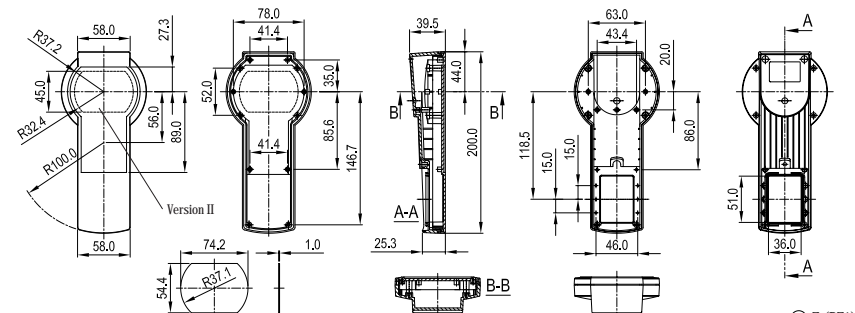
Space for mounting smaller barcode scanner under the display area. Battery compartment for two 1.5 V mignon cells (AA) or one 9 V flat battery (PP3) available as accessory. Robust and sealed up to IP 65 (with sealing kit). Recessed area for protection of operating elements and membrane keyboards.

ASSEMBLY

Top and bottom part fixed by screws. Lid of battery compartment alternatively snapped-on and / or screwed down.

Detailed drawing available on demand in dwg or dxf format (www.okw.com)

⊕ ⊗ = Type of screw for case fixing: cross head



⊕ Z (PZ1)

Part No.	CASE (Part-No. with \neq see EMC page 32)			
	Outside dim. in mm			Supply
	L	W	H	
A 90 76 107 \neq	200	58/82	40	off-white I
A 90 76 207 \neq	200	58/82	40	off-white II
A 90 76 109 \neq	200	58/82	40	black I
A 90 76 209 \neq	200	58/82	40	black II

ACCESSORIES

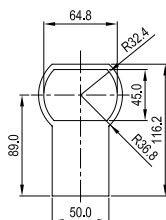
Article	Version
Sealing kit	for sealing up to IP 65
Display window*	transparent acrylic glass without printing, as a set with adhesive foil

FURTHER ACCESSORIES (order data see page accessories)

Article

- Battery compartment for 4 x 1.5 V mignon cells (AA)
- or one 9 V flat battery (PP3)

Max. dim. for the membrane keyboard:



* With individual screen printing, adapted to your visible display cutout as well as to cover the area of adhesive foil, on demand.

ACCESSORIES DATEC-CONTROL XS

OKW



BATTERY COMPARTMENT

Additional battery compartment for DATEC-CONTROL XS. For two 1.5 V mignon cells (AA) or one 9 V flat battery (PP3) alternatively. Assembly by self-tapping screws (supplied).

Article	Version
Battery compartment	for 2 x 1.5 V mignon cells (AA) or 1 x 9 V flat battery (PP3), ABS
Set of battery clips	for 2 x 1.5 V mignon cells (AA), nickel plated
Plug-in contact	for 1 x 9 V flat battery (PP3)

Part-No.

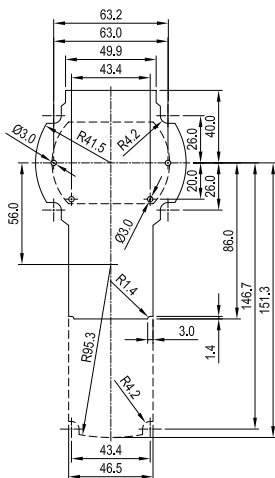
A 91 76 128

A 91 76 007

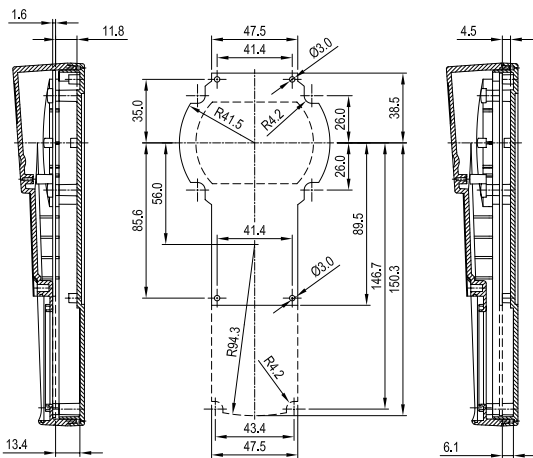
A 91 60 003

PCB DIMENSIONS

for mounting in base part
DATEC-CONTROL XS



for mounting in top part
DATEC-CONTROL XS



VERSION I

With closed operating area,
recess: 1.7 mm deep.

VERSION II

With maximum sized cutout
for display modules.



DESIGN

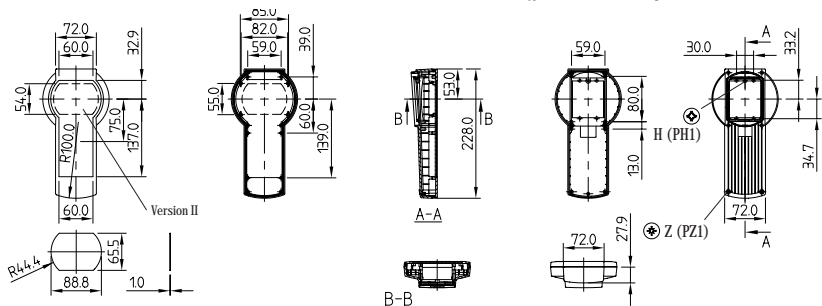
Hand-held box with wide range of applications and generous display area prepared for mounting industry standard LCD modules. Battery compartment for four 1.5 V mignon cells (AA) or one 9 V flat battery (PP3) available as accessory. Robust and sealed up to IP 65 (with sealing kit). Recessed area for the protection of operating elements and membrane keyboards.

ASSEMBLY

Top and bottom part fixed by screws. Lid of battery compartment alternatively snapped-on and / or screwed down.

Detailed drawing available on demand in dwg or dxf format.

⊕ ⊗ = Type of screw for case fixing: cross head



Part No.

CASE (Part-No. with # see EMC page 32)

Outside dim. in mm

L

W

H

Colour

Version

Supply

A 90 77 107 #

228 72/117 47

off-white

I

1 top and base part,

A 90 77 207 #

228 72/117 47

off-white

II

1 battery compartment lid,

A 90 77 109 #

228 72/117 47

black

I

1 mounting set with screws for the case

A 90 77 209 #

228 72/117 47

black

II

and PCB, rubber feet

ACCESSORIES

Article

Version

A 91 77 006

Sealing kit

for sealing up to **IP 65**

A 91 77 001

Display window*

transparent acrylic glass without printing, as a set with adhesive foil

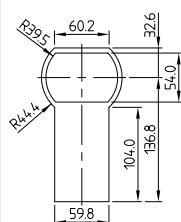
FURTHER ACCESSORIES (order data see page 35)

Article

· Battery compartment for 4 x 1.5 V mignon cells (AA)

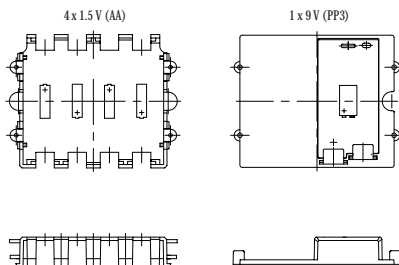
· Battery compartment for 1 x 9 V flat battery (PP3)

Max. dim. for the membrane keyboard:



ACCESSORIES DATEC-CONTROL S

OKW

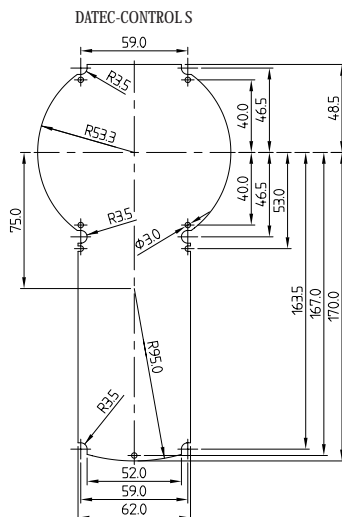


BATTERY COMPARTMENT

Additional battery compartments for DATEC-CONTROL S. For four 1.5 V mignon cells (AA) or one 9 V flat battery (PP3) alternatively. Assembly by self-tapping screws (supplied).

Article	Version	Part No.
Battery compartment	for 4 x 1.5 V mignon cells (AA), ABS	A 91 74 004
	for 1 x 9 V flat battery (PP3), ABS	A 91 77 310
Set of battery clips	for 4 x 1.5 V mignon cells (AA), tin plated	A 91 61 001
	for 1 x 9 V flat battery (PP3), tin plated	A 91 74 006
Plug-in contact	for 1 x 9 V flat battery (PP3)	A 91 60 003

PCB DIMENSIONS



VERSION 1

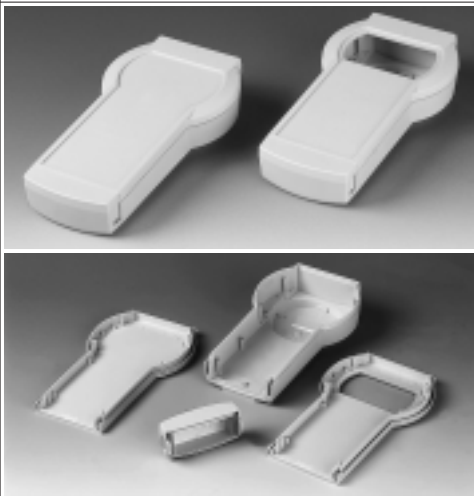
With closed operating area,
recess: 1.7 mm deep.

VERSION II

With maximum sized cutout
for digital displays.

SPECIAL ACCESSORIES

The PCMCIA-interfaces are prepared for slots from the JST company: PCMCIA type I (1 or 2 cards), type II or type III: 1 card each.
Supplier data on demand.



DESIGN

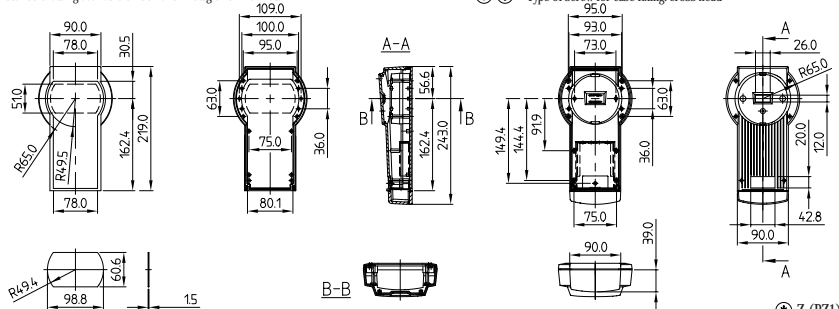
Convenient hand held case suitable for the mounting plug-in battery compartments for either 4 or 5 mignon cells 1.5 V (AA) or re-chargeable batteries in the same format. Large operating- and display area for mounting graphic displays. Space for PCMCIA-slots under the battery compartment (see accessories on page 39).

ASSEMBLY

Top and bottom part fixed by screws. End cover for the case with snap-in mechanism.
Without a battery compartment: fixing by 2 locking pins (supplied) possible.

Detailed drawing available on demand in dwg or dxf format

☼ ☼ = Type of screw for case fixing: cross head



⊗ Z (PZ1)

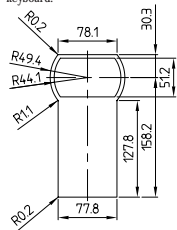
Part No.	CASE (Part-No. with \neq see EMC page 32)					
	Outside dim. in mm		Colour	Version	Supply	
	L	W	H			
A 90 78 107 \neq	243	90/128	60	off-white	I	1 top and 1 bottom part.
A 90 78 207 \neq	243	90/128	60	off-white	II	1 end cover, 2 locking pins.
A 90 78 109 \neq	243	90/128	60	black	I	1 mounting set with screws for the case
A 90 78 209 \neq	243	90/128	60	black	II	and PCB, rubber feet

ACCESSORIES	
Article	Version
A 91 78 006	Sealing kit for protection class IP 54
A 91 78 001	Display window* transparent acrylic glass without printing, as a set with adhesive foil

FURTHER ACCESSORIES (order data see page 38/40)

Article	
· station for desktop and wall-mounting application	· end plate for electronic area
· battery compartment for 4 or 5 mignon cells 1.5 V (AA)	· contacts
· battery compartment holder	

For max. PCB dimensions see
page 40.
Max. dim. for the membrane
keyboard:



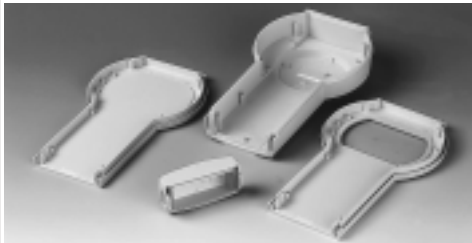
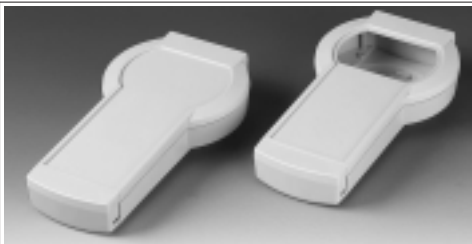
DESIGN

Convenient hand held case suitable for mounting plug-in battery compartments for either 4 or 5 mignon cells 1.5 V (AA) or re-chargeable batteries in the same format. Large operating- and display area for the mounting of graphic displays. Space for PCMCIA-slots under the battery compartment (see accessories on page 39).

ASSEMBLY

Top and bottom part fixed by screws. End cover for the case with snap-in mechanism.

Without a battery compartment: fixing by 2 locking pins (supplied) possible.



VERSION 1

With closed operating area,
recess: 1.7 mm deep.

VERSION II

With maximum sized cutout
for digital displays.

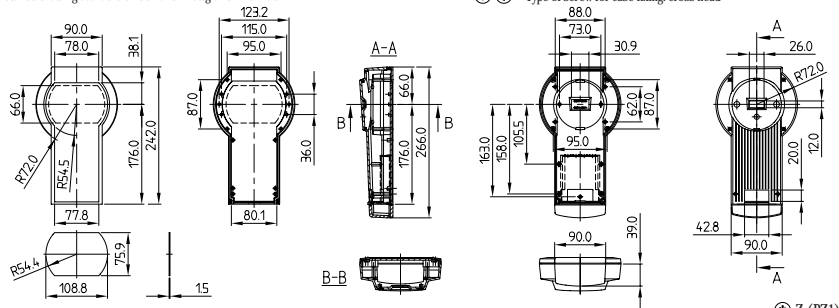
SPECIAL ACCESSORIES

The PCMCIA-interfaces are prepared for slots from the JST company: PCMCIA type I (1 or 2 cards), type II or type III: 1 card each. Supplier data on demand.

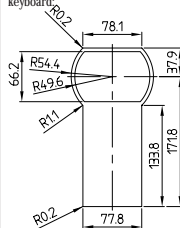
DATEC-CONTROL

Detailed drawing available on demand in dwg or dxf format.

☼ ☼ = Type of screw for case fixing: cross head



For max. PCB dimensions see
page 40.
Max. dim. for the membrane
keyboards:



CASE (Part-No. with ⚡ see EMC page 32)

Outside dim. in mm			Colour	Version	Supply
L	W	H			
266	90/144	60	off-white	I	1 top and 1 bottom part,
266	90/144	60	off-white	II	1 end cover, 2 locking pins,
266	90/144	60	black	I	1 mounting set with screws for the case
266	90/144	60	black	II	and PCB, rubber feet

ACCESSORIES

Article	Version
Sealing kit	for protection class IP 54
Display window*	transparent acrylic glass without printing, as a set with adhesive foil

FURTHER ACCESSORIES (order data see 38/40)

Article	
- station for desktop and wall-mounting application	- end plate for electronic area
- battery compartment for 4 or 5 mignon cells 1.5 V (AA)	- contacts
- battery compartment holder	

Part No.

A 90 79 107 \$

A 90 79 207 4

A 90 79 109 \$

A 90 79 209 \$

A 91 79 006

A 91 79 001

*With individual screen printing, adapted to your visible display cutout as well as to cover the area of adhesive foil, on demand.

STATION

Ergonomic inclined position allows convenient reading of data. Offers additional space for charging electronics, another battery compartment, slots, printing device, etc.

VERSION I

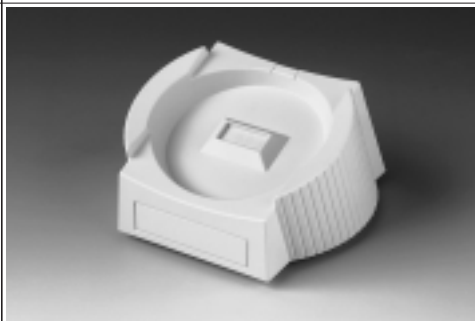
Desktop version, consisting of
1 station
1 bottom plate
Fixing screws for the bottom plate and PCB
Covers
Non-slip pads

VERSION II

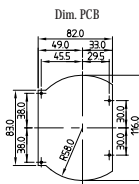
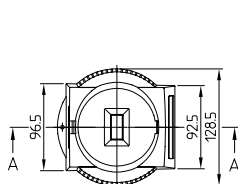
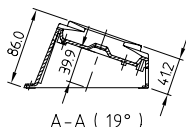
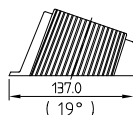
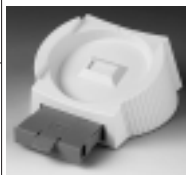
Wall-mounting, consisting of
1 station
1 bottom plate
Fixing screws for the bottom plate and PCB
1 cover
1 locking mechanism



The interface station / case is prepared for contacts (see page 40). Additional machining (bore-holes) is necessary.

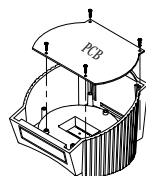


The bottom plate is prepared for the battery compartment holder*.



The battery compartment* can be fitted in the station – after mounting the battery compartment holder* – for charging the re-chargeable batteries. Easy plug-in design.

* accessories see page 39

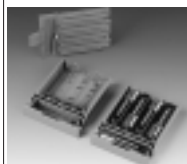


Part No.	Version	Material / Colour
A 91 78 137	I	ABS, off-white
A 91 78 139	I	ABS, black
A 91 78 167	II	ABS, off-white, snap-in mechanism volcano
A 91 78 169	II	ABS, black, snap-in mechanism volcano

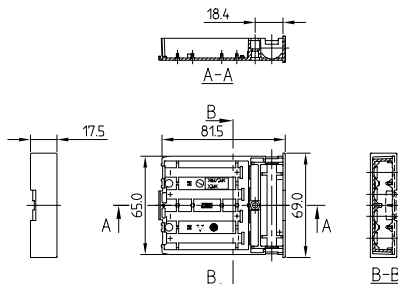
ACCESSORIES DATEC-CONTROL M AND L

OKW


Version I
for 4 mignon cells 1.5 V (AA)



Version II
for 5 mignon cells 1.5 V (AA)



Version	Material / Colour	Application
I	Polycarbonate, volcano	for 4 x 1.5 V mignon cells (AA)
II	Polycarbonate, volcano	for 5 x 1.5 V mignon cells (AA)

BATTERY COMPARTMENT

Used in combination with the battery compartment holder in the case and in the station.
Secure snap-in mechanism.

Supply:

- 1 battery compartment.
- 1 lid of battery compartment.
- 1 set of battery clips.
- 1 screw.

Part No.

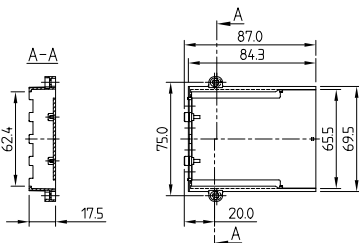
A 91 78 128

A 91 78 158

DATEC-CONTROL



* End plate for electronic area must be ordered to support battery compartment holder in case.



Material / Colour	Supply
Polycarbonate, volcano	1 battery compartment holder, set of battery clips for connecting to versions I and II battery compartment, 2 fixing screws

BATTERY COMPARTMENT HOLDER

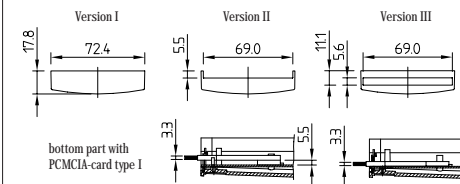
Enables the mounting of a battery compartment in the station and the case.
For mounting the battery compartment holder there are two positions possible – according to the requirements of your components configuration PCBs etc.

Part No.

A 91 78 118



Supply:
1 end plate.



Version	Material / Colour	Application
I	ABS, volcano	to close the electronic area
II	ABS, volcano	for use with a PCMCIA-card type I
III	ABS, volcano	for use with a PCMCIA-card type I

END PLATE FOR ELECTRONIC AREA

Simple insertion into the guides in the bottom part.

Part No.

A 91 78 178

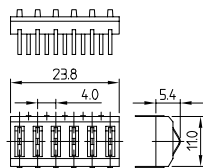
A 91 78 188

A 91 78 198

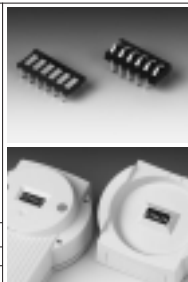
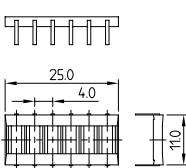
CONTACTS

6-pole version for transfer of the charging current and the data exchange. The supports are already integrated in the base and the station. Additional machining is necessary for fitting.

Contact male



Contact female



Part-No.

A 91 78 007

A 91 78 008

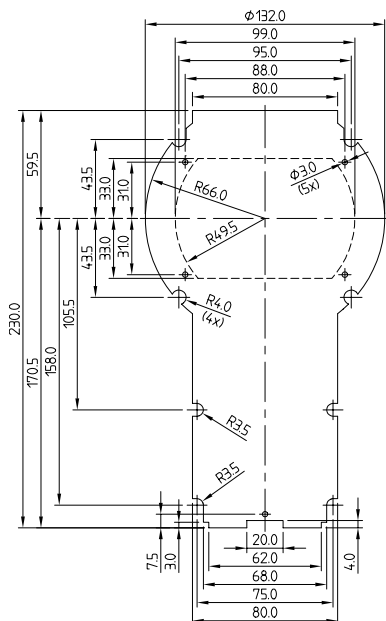
Version

Contact male for the station, 1 piece

Contact female for the case, 1 piece

PCB DIMENSIONS

DATEC-CONTROL L



DATEC-CONTROL M

