

# DIN-MODULAR CASE TYPE B

acc. to DIN 43 700

## DESIGN 1:

Rectangular section with guide ridges for horizontal slide-in mounting of PCBs from the front. Removable front and rear frame.

- ① Case
- ② Rear panel of case
- ③ Snap-in front frame
- ④ Front panel / Filter plate\* (\*separate accessories).

Norm dimensions:  
96 x 48 mm / 72 x 72 mm /  
96 x 96 mm

## DESIGN 2:

U-section with removable lateral lid for vertical slide-in mounting of PCBs. Fixed front frame and removable rear frame (except case 144 x 72 mm which is also available with removable front frame).

- ① Case U-section
- ② Lateral lid of case with screw set
- ③ Rear panel of case
- ④ Front panel / Filter plate\* (\*separate accessories).

Norm dimensions:  
144 x 72 mm / 144 x 144 mm

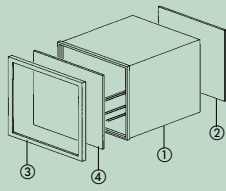
## DESIGN 3:

Same as design 2, but particularly designed for 19"-system slide-in assemblies 12 TE, 3 HE (Eurocard size).

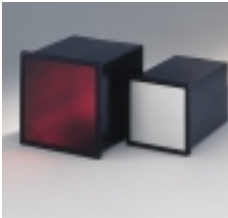
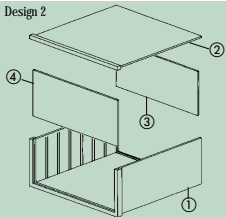
- ① Case U-section
- ② Lateral lid of case with screw set
- ③ rear panel of case
- ④ PCB supports in 1 TE steps
- ⑤ plug holder for connectors acc. to DIN 41612
- ⑥ tapped and threaded strips for fixing the components.

Norm dimensions:  
144 x 72 mm

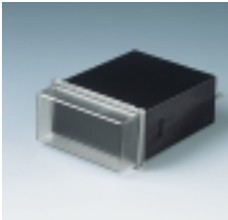
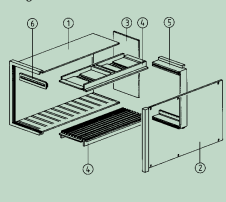
Design 1



Design 2



Design 3



## DIN-MODULAR CASE TYPE B:

Available in three different assembly versions consisting of several parts, made of reinforced Noryl with outstanding mechanical and electrical properties.

## YOUR ADVANTAGE

- Case made of glass-fibre reinforced Noryl with outstanding mechanical and electrical properties, corresponding to UL-standard 94 V-1.
- Available in 3 different designs, depending on the inserts.
- All components including the electronic parts can slide into the case from the front side.
- The rear panel has fixing ribs to hold PCBs and slots for the plug connectors.
- Holder or bracket for secure mounting within the control panel.
- Transparent snap-in cover (accessory) protects displays and operating elements.

## STANDARD COLOUR

Black.  
Please refer to colour chart on page 214.

## MATERIAL

Glass fibre reinforced Noryl with outstanding mechanical and electrical properties.

Corresponds to UL 94 V-1 (except front frame and snap-in cover). Please refer to the specifications on pages 215-217.

**DIN-MODULAR CASE**  
Design I  
in standard dimensions  
96 x 48 mm.

Mounting lengths:  
109 and 150 mm.

### VERSION I

Rear panel without screws.  
For mounting holding frame  
(accessory).

### VERSION II

Rear panel with 2 screws.  
For mounting the holders  
(accessory).



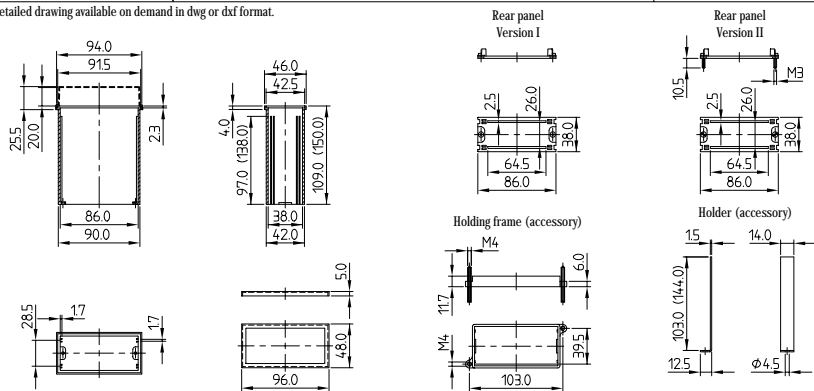
### ASSEMBLY

All components including the rear panel can slide into the case from the front side.

Case fixing to a control panel/board by means of 2 holders or 1 holding frame (accessories).

The front frame can be replaced by a snap-in cover.

Detailed drawing available on demand in dwg or dxf format.



| Part-No.    |  | CASE                |    |     | Rear panel | Supply        |
|-------------|--|---------------------|----|-----|------------|---------------|
| Version I   | Version II   | Standard dim. in mm | W  | H   |            |               |
| A 98 42 401 | A 98 42 402  | 96                  | 48 | 109 | 0          | 1 case        |
| A 98 42 411 | A 98 42 412  | 96                  | 48 | 109 | 1          | 1 front frame |
| A 98 42 421 | A 98 42 422  | 96                  | 48 | 109 | 2          | 1 rear panel  |
| A 98 42 501 | A 98 42 502  | 96                  | 48 | 150 | 0          |               |
| A 98 42 511 | A 98 42 512  | 96                  | 48 | 150 | 1          |               |
| A 98 42 521 | A 98 42 522  | 96                  | 48 | 150 | 2          |               |
| ACCESSORIES |  |                     |    |     |            |               |
| Article     | Version  |                     |    |     |            |               |
| A 92 84 202 | Holding frame for case version I                                     |                     |    |     |            |               |
| A 92 83 361 | Holder (set) for 96 x 48 x 109 version II                            |                     |    |     |            |               |
| A 92 84 251 | Holder (set) for 96 x 48 x 150 version II                            |                     |    |     |            |               |
| A 91 84 221 | Front panel matt anodized aluminium, 91.5 x 42.5 x 2 mm              |                     |    |     |            |               |
| A 91 84 212 | Filter plate red, 2 pieces for sandwich mounting, 91.5 x 42.5 x 1 mm |                     |    |     |            |               |
| A 91 84 222 | Filter plate red, 91.5 x 42.5 x 2 mm                                 |                     |    |     |            |               |
| A 92 84 204 | Snap-in cover PC, transparent (up to IP 53)                          |                     |    |     |            |               |

# DIN-MODULAR CASE 72 x 72 TYPE B

acc. to DIN 43 700

## ASSEMBLY

All components including the rear panel can slide into the case from the front side.

The rear panel has fixing ribs to hold PCBs and slots for the plug connectors.

Case fixing to a control panel/board by means of 2 holders (accessory).

The front frame can be replaced by a snap-in cover.

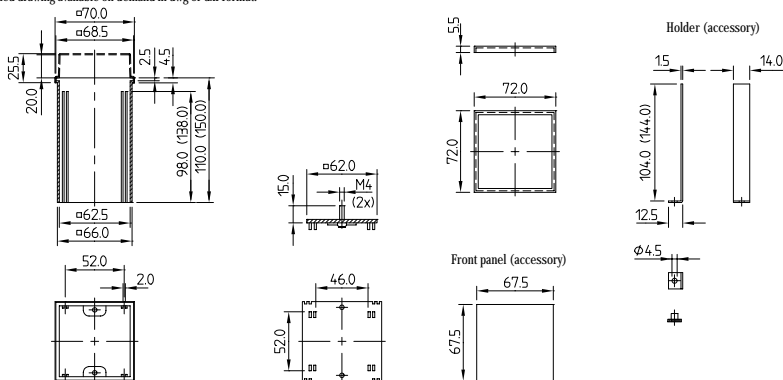


DIN-MODULAR CASE  
Design 1  
in standard dimensions  
72 x 72 mm.

Mounting lengths:  
110 and 150 mm.



Detailed drawing available on demand in dwg or dxf format.



## CASE

| Standard dim. in mm |    |     | Rear panel                | Supply        |
|---------------------|----|-----|---------------------------|---------------|
| W                   | H  | L   | Number of connector slots |               |
| 72                  | 72 | 110 | 0                         | 1 case        |
| 72                  | 72 | 110 | 1                         | 1 front frame |
| 72                  | 72 | 110 | 2                         | 1 rear panel  |
| 72                  | 72 | 150 | 0                         |               |

## Part-No.

A 98 33 401

A 98 33 411

A 98 33 421

A 98 33 501

## ACCESSORIES

| Article       | Version   |
|---------------|---|
| Holder (set)  | for 72 x 72 x 110                                       |
| Holder (set)  | for 72 x 72 x 150                                       |
| Front panel   | matte anodized aluminium, thickness 2 mm                |
| Filter plates | red, 2 pieces for sandwich mounting, thickness 2 x 1 mm |
| Filter plates | red, thickness 2 mm                                     |
| Snap-in cover | PC, transparent (IP 53)                                 |

A 92 83 341

A 92 83 351

A 91 83 321

A 91 83 312

A 91 83 322

A 92 83 304

DIN-MODULAR CASE  
Design 1  
in standard dimensions  
96 x 96 mm.

Mounting lengths:  
51, 100 and 151 mm.



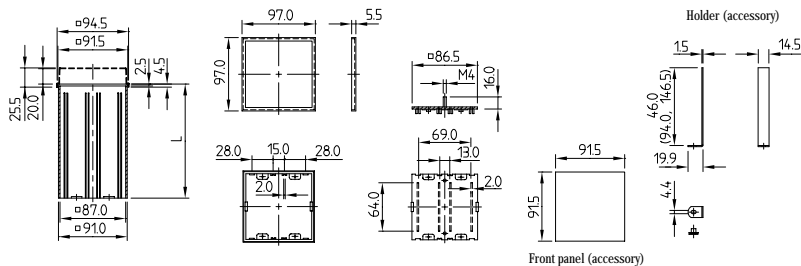
### ASSEMBLY

All components including the rear panel can slide into the case from the front side. The rear panel has fixing ribs to hold PCBs and slots for the plug connectors.

Case fixing to a control panel/board by means of 2 holders (accessory).

The front frame can be replaced by a snap-in cover.

Detailed drawing available on demand in dwg or dxf format.



| Part-No.    | CASE                     |  |     | Rear panel<br>Number of connector slots | Supply                 |
|-------------|--------------------------|--|-----|---|------------------------|
|             | Standard dim. in mm<br>W | H  | L   |   |                        |
| A 98 44 101 | 96                       | 96   | 51  | 0                                       | 1 case                 |
| A 98 44 111 | 96                       | 96   | 51  | 1                                       | 1 front frame          |
| A 98 44 121 | 96                       | 96   | 51  | 2                                       | 1 rear panel, 4 screws |
| A 98 44 141 | 96                       | 96   | 51  | 4                                       |                        |
| A 98 44 401 | 96                       | 96   | 100 | 0                                       |                        |
| A 98 44 411 | 96                       | 96   | 100 | 1                                       |                        |
| A 98 44 421 | 96                       | 96   | 100 | 2                                       |                        |
| A 98 44 441 | 96                       | 96   | 100 | 4                                       |                        |
| A 98 44 501 | 96                       | 96   | 151 | 0                                       |                        |
| A 98 44 511 | 96                       | 96   | 151 | 1                                       |                        |
| A 98 44 541 | 96                       | 96   | 151 | 4                                       |                        |
| ACCESSORIES |                          |  |     |   |                        |
|             | Article                  | Version  |     |   |                        |
| A 92 84 511 | Holder (set)             | for 96 x 96 x 51                               |     |   |                        |
| A 92 84 541 | Holder (set)             | for 96 x 96 x 100                              |     |   |                        |
| A 92 84 551 | Holder (set)             | for 96 x 96 x 151                              |     |   |                        |
| A 91 84 421 | Front panel              | matt anodized aluminium, thickness 2 mm        |     |   |                        |
| A 91 84 412 | Filter plates            | red, for sandwich mounting, thickness 2 x 1 mm |     |   |                        |
| A 91 84 422 | Filter plates            | red, thickness 2 mm                            |     |   |                        |
| A 92 84 404 | Snap-in cover            | PC, transparent (up to IP 53)                  |     |   |                        |

# DIN-MODULAR CASE 144 x 72 TYPE B

acc. to DIN 43 700

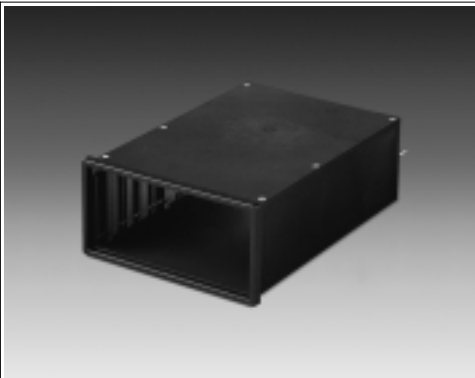
**OKW**

## ASSEMBLY

PCBs as well as the rear panel are inserted in the case from the front side, when the cover is removed. Front slide insert of PCB possible, because the vertical guide ridges are interrupted horizontally.

Case fixing to a control panel/board by means of 2 holders (accessory).

The front frame can be replaced by a snap-in cover.



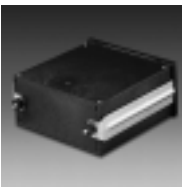
## DIN-MODULAR CASE

Design 2 in standard dimensions 144 x 72 mm.

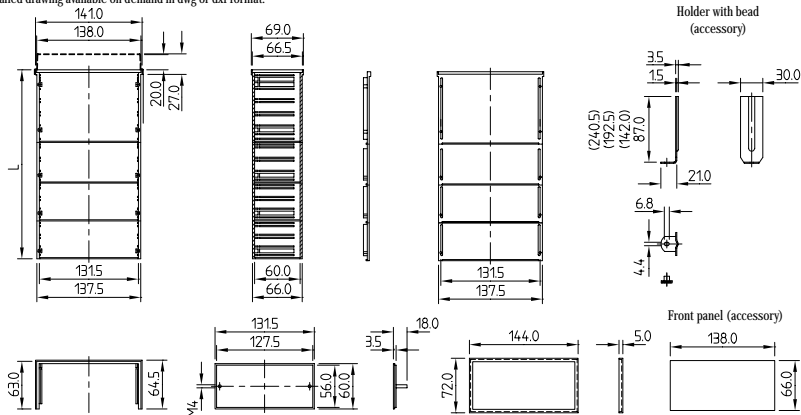
Front frame is a separate piece.

Mounting lengths including separate front frame:

94, 148, 199 and 246 mm.



Detailed drawing available on demand in dwg or dxf format.



## CASE

| Standard dim. in mm |    |     | Front frame | Supply                                 |
|---------------------|----|-----|-------------|--|
| W                   | H  | L   |             |  |
| 144                 | 72 | 94  | separate    | 1 case U-section                       |
| 144                 | 72 | 148 | separate    | 1 lateral lid of case with screws      |
| 144                 | 72 | 199 | separate    | 1 rear panel (without slots), 2 screws |
| 144                 | 72 | 246 | separate    | 1 front frame                          |

## ACCESSORIES

| Article       | Version                                 |
|---------------|---|
| Holder (set)  | for 144 x 72 x 94                       |
| Holder (set)  | for 144 x 72 x 148                      |
| Holder (set)  | for 144 x 72 x 199                      |
| Holder (set)  | for 144 x 72 x 246                      |
| Front panel   | matt anodized aluminium, thickness 3 mm |
| Filter plate  | red, thickness 3 mm                     |
| Snap-in cover | PC, transparent (up to IP 53)           |

## Part-No.

A 98 35 301  
A 98 35 501  
A 98 35 601  
A 98 35 701

A 92 83 531  
A 92 83 551  
A 92 83 561  
A 92 83 571  
A 91 83 531  
A 91 83 532  
A 92 83 504

DIN-MODULAR CASE  
Design 2  
in standard dimensions  
144 x 72 mm.

With fixed front frame.

Mounting lengths:  
96, 150, 200.5 and 248 mm.



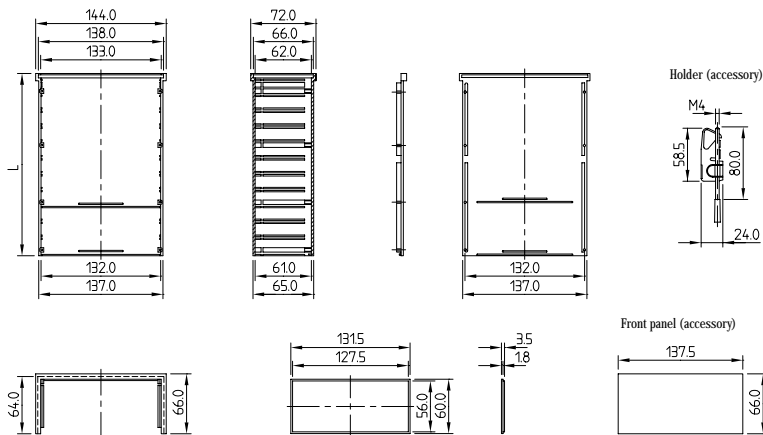
### ASSEMBLY

PCBs as well as the rear panel are inserted in the case from the front side, when the cover is removed. Front slide insert of PCB possible, because the vertical guide ridges are interrupted horizontally.

Case fixing to a control panel/board by means of 2 holders (accessory).

The front frame can be replaced by a snap-in cover.

Detailed drawing available on demand in dwg or dxf format.



Part-No.

CASE

Standard dim. in mm

W H L

Front frame

Supply

A 98 35 302

144 72 96

fixed

1 case U-section

A 98 35 502

144 72 150

fixed

1 lateral lid of case with screws

A 98 35 602

144 72 200.5

fixed

1 rear panel (without slots)

A 98 35 702

144 72 248

fixed

ACCESSORIES

Article

Version

A 92 80 003

Holder (set)

for 144 x 72 x 96-248

A 91 83 531

Front panel

mat anodized aluminium, thickness 3 mm

A 91 83 532

Filter plate

red, thickness 3 mm

# DIN-MODULAR CASE 144 x 144 TYPE B

acc. to DIN 43 700

## ASSEMBLY

PCBs as well as the rear panel are inserted in the case from the front side, when the cover is removed. Front slide insert of PCB possible, because the vertical guide ridges are interrupted horizontally.

Case fixing to a control panel/board by means of 2 holders (accessory).

The front frame can be replaced by a snap-in cover.



## DIN-MODULAR CASE

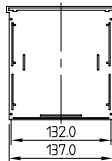
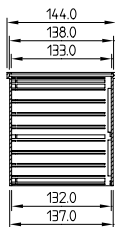
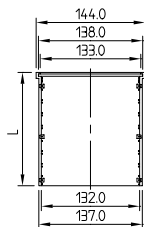
Design 2  
in standard dimension  
144 x 144 mm.

With **fixed** front frame.

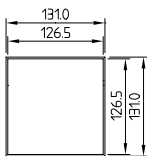
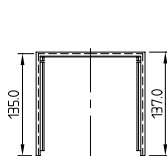
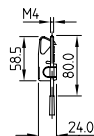
Mounting lengths:  
93, 152, 201 and 248 mm.



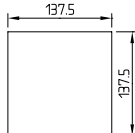
Detailed drawing available on demand in dwg or dxf format.



Holder (accessory)



Front panel (accessory)



## CASE

| Standard dim. in mm |     |     | Front frame | Supply                            |
|---------------------|-----|-----|-------------|-----------------------------------|
| W                   | H   | L   |             |                                   |
| 144                 | 144 | 93  | fixed       | 1 case U-section                  |
| 144                 | 144 | 152 | fixed       | 1 lateral lid of case with screws |
| 144                 | 144 | 201 | fixed       | 1 rear panel (without slots)      |
| 144                 | 144 | 248 | fixed       |                                   |

## ACCESSORIES

| Article      | Version                                 |
|--------------|---|
| Holder (set) | for 144 x 144 x 93-248                  |
| Front panel  | matt anodized aluminium, thickness 3 mm |
| Filter plate | red, thickness 3 mm                     |

## Part-No.

A 98 55 302  
A 98 55 502  
A 98 55 602  
A 98 55 702

A 92 80 003  
A 91 85 531  
A 91 85 532

DIN-MODULAR CASES

DIN-MODULAR CASE  
for 19" slide-in systems.

In standard dimensions  
144 x 72 mm (12 TE / 3 HE).

Mounting lengths:  
200 and 248 mm.

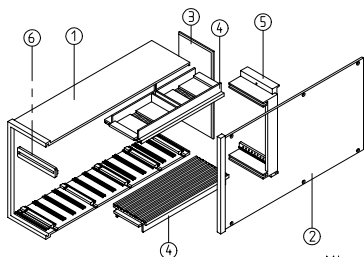


The cases are supplied  
preassembled – see supply  
section.

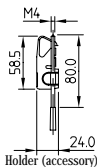
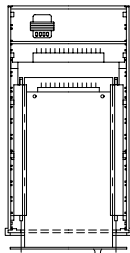
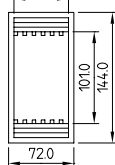
Case fixing to a control  
panel/board by means of  
2 holders (accessory).

Detailed drawing available on demand in dwg or dxf format.

Control board  
cut-out: 68 x 138



12 TE = 60.0mm



Holder (accessory)

Part-No.

CASE

Width units

Standard dim. in mm

W H L

Supply

A 98 35 609

12 TE

72 144 200

- ① 1 case U-section
- ② 1 lateral lid of case with screws
- ③ 1 rear panel
- ④ 2 PCB supports with in 1 TE steps
- ⑤ 1 plug holder for connectors acc. to DIN 41 612
- ⑥ 2 tapped and threaded strips for fixing the components

A 98 35 709

72 144 248

ACCESSORIES

Article

A 92 80 003

Holder (set)