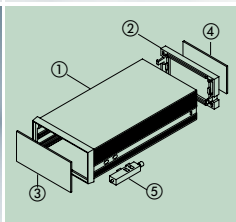
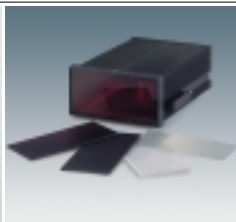


YOUR ADVANTAGE

- Material corresponds to UL 94 V-0: self-extinguishing and shock resistant.
- 7 different standard dimensions and variable case depths.
- Easy and fast assembly of components – without the use of one single screw. Fastening elements for the mounting of control panels are delivered together with the case.
- Front and rear panel for snapping-in.
- Fixing of the PCBs by the rear frame.
- Special length possible, on request, between minimum and maximum standard case length.
- Transparent cover (available as accessory) protects displays and operating elements.



APPLICATIONS

Cases manufactured in accordance with DIN 43 700. Horizontal and vertical guide ridges for internal PCB mounting. Especially suitable for measuring, control technology and remote controls. Large variety of applications possible due to different types of constructions and accessories.

- ① Case
- ② Frame (rear) with snap-lock mechanism
- ③ Front panel*
- ④ Rear panel*
- ⑤ Fastening element

* separate accessories

STANDARD COLOUR

Case, frame and the fastening elements: Black. Please refer to colour chart on page 214.

MATERIAL

Case and fastening elements are made of Noryl UL 94 V-0. Protection cover in polycarbonate UL 94 V-2. Please refer to accessories for front- and rear panels. Different characteristics of plastics can be taken from pages 215-217.

Two different types of cases for mounting into control boards according to DIN 43 700.

DIN-MODULAR CASE TYPE A:

Screwless assembly of all case parts, made of Noryl UL 94 V-0 with a high standard of mechanical and electrical properties.

MODIFICATIONS AS PER CUSTOMER'S REQUIREMENTS

Machining on modern CNC-controlled machines. Lacquering. Silk screen and tamper printing. See pages 210-213.

DIN-MODULAR CASE TYPE B

acc. to DIN 43 700

OKW

DESIGN 1:

Rectangular section with guide ridges for horizontal slide-in mounting of PCBs from the front. Removable front and rear frame.

- ① Case
- ② Rear panel of case
- ③ Snap-in front frame
- ④ Front panel / Filter plate* (*separate accessories).

Norm dimensions:
96 x 48 mm / 72 x 72 mm /
96 x 96 mm

DESIGN 2:

U-section with removable lateral lid for vertical slide-in mounting of PCBs. Fixed front frame and removable rear frame (except case 144 x 72 mm which is also available with removable rear frame).

- ① Case U-section
- ② Lateral lid of case with screw set
- ③ Rear panel of case
- ④ Front panel / Filter plate* (*separate accessories).

Norm dimensions:
144 x 72 mm / 144 x 144 mm

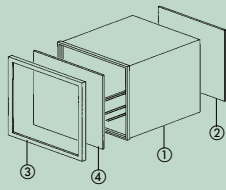
DESIGN 3:

Same as design 2, but particularly designed for 19"-system slide-in assemblies 12 TE, 3 HE (Eurocard size).

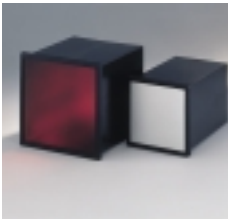
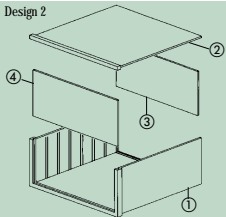
- ① Case U-section
- ② Lateral lid of case with screw set
- ③ rear panel of case
- ④ PCB supports in 1 TE steps
- ⑤ plug holder for connectors acc. to DIN 41612
- ⑥ tapped and threaded strips for fixing the components.

Norm dimensions:
144 x 72 mm

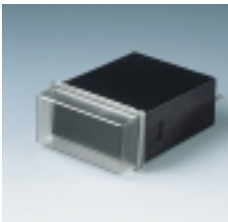
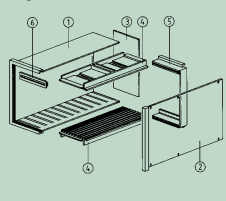
Design 1



Design 2



Design 3



YOUR ADVANTAGE

- Case made of glass-fibre reinforced Noryl with outstanding mechanical and electrical properties, corresponding to UL-standard 94 V-1.
- Available in 3 different designs, depending on the inserts.
- All components including the electronic parts can slide into the case from the front side.
- The rear panel has fixing ribs to hold PCBs and slots for the plug connectors.
- Holder or bracket for secure mounting within the control panel.
- Transparent snap-in cover (accessory) protects displays and operating elements.

STANDARD COLOUR

Black.
Please refer to colour chart on page 214.

MATERIAL

Glass fibre reinforced Noryl with outstanding mechanical and electrical properties.

Corresponds to UL 94 V-1 (except front frame and snap-in cover). Please refer to the specifications on pages 215-217.

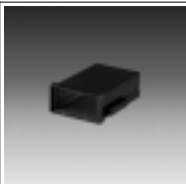
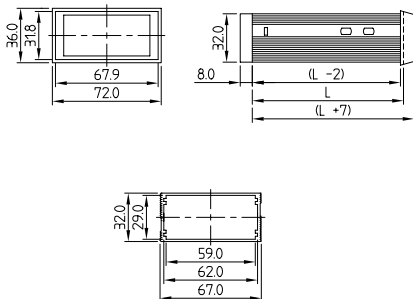
DIN-MODULAR CASE TYPE B:

Available in three different assembly versions consisting of several parts, made of reinforced Noryl with outstanding mechanical and electrical properties.

DIN-MODULAR CASE 72 x 36 AND 48 x 48 TYPE A

DIN-MODULAR
CASE 72 x 36

Detailed drawing available on demand in dwg or dxf format.



With guide ridges for slide-in PCB mounting on 2 sides.

Accessories see page 186.

Part-No.

CASE

Standard dim. in mm

| W | H | L |
|----|----|-----|
| 72 | 36 | 57 |
| 72 | 36 | 75 |
| 72 | 36 | 100 |

Supply

| |
|-----------------------------|
| 1 case |
| 1 rear frame with snap-lock |
| 2 fixings |

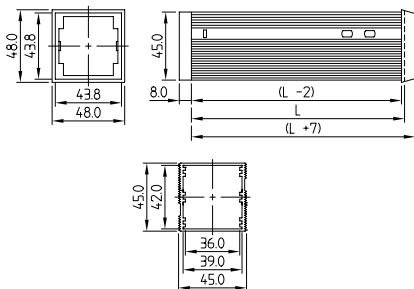
B 60 21 011

B 60 21 021

B 60 21 031

DIN-MODULAR
CASE 48 x 48

Detailed drawing available on demand in dwg or dxf format.



With guide ridges for slide-in PCB mounting on 2 sides.

Accessories see page 186.

Part-No.

CASE

Standard dim. in mm

| W | H | L |
|----|----|-----|
| 48 | 48 | 57 |
| 48 | 48 | 75 |
| 48 | 48 | 100 |
| 48 | 48 | 109 |
| 48 | 48 | 114 |
| 48 | 48 | 124 |
| 48 | 48 | 131 |
| 48 | 48 | 156 |

Supply

| |
|-----------------------------|
| 1 case |
| 1 rear frame with snap-lock |
| 2 fixings |

B 60 12 011

B 60 12 021

B 60 12 031

B 60 12 041

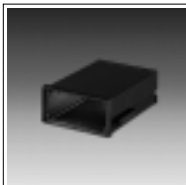
B 60 12 051

B 60 12 061

B 60 12 071

B 60 12 091

DIN-MODULAR CASE 96 x 48 AND 72 x 72 TYPE A



VERSION I

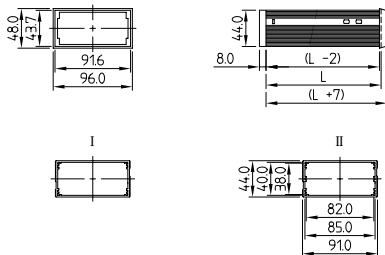
With guide ridges for slide-in PCB mounting on 2 sides.
Mounting lengths: 57, 75, 100, 109, 114 and 124 mm.

VERSION II

With guide ridges for slide-in PCB mounting on 2 sides.
Mounting lengths: 131, 139, 156 and 179 mm.

Accessories see page 186.

Detailed drawing available on demand in dwg or dxf format.



CASE

| Standard dim. in mm | | | Version | Supply |
|---------------------|----|-----|---------|-----------------------------|
| W | H | L | | |
| 96 | 48 | 57 | I | 1 case |
| 96 | 48 | 75 | I | 1 rear frame with snap-lock |
| 96 | 48 | 100 | I | 2 fixings |
| 96 | 48 | 109 | I | |
| 96 | 48 | 114 | I | |
| 96 | 48 | 124 | I | |
| 96 | 48 | 131 | II | |
| 96 | 48 | 139 | II | |
| 96 | 48 | 156 | II | |
| 96 | 48 | 179 | II | |

DIN-MODULAR CASE 96 x 48

Part-No.

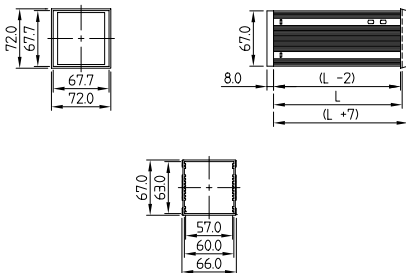
B 60 32 011
B 60 32 021
B 60 32 031
B 60 32 041
B 60 32 051
B 60 32 061
B 60 32 072
B 60 32 082
B 60 32 092
B 60 32 102



With guide ridges for slide-in PCB mounting on 2 sides.

Accessories see page 186.

Detailed drawing available on demand in dwg or dxf format.



CASE

| Standard dim. in mm | | | Supply |
|---------------------|----|-----|-----------------------------|
| W | H | L | |
| 72 | 72 | 57 | 1 case |
| 72 | 72 | 75 | 1 rear frame with snap-lock |
| 72 | 72 | 100 | 2 fixings |
| 72 | 72 | 109 | |
| 72 | 72 | 114 | |
| 72 | 72 | 124 | |
| 72 | 72 | 131 | |
| 72 | 72 | 156 | |

DIN-MODULAR CASE 72 x 72

Part-No.

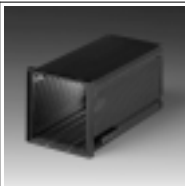
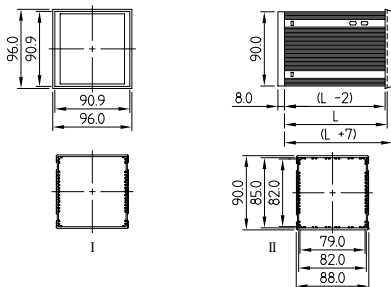
B 60 23 011
B 60 23 021
B 60 23 031
B 60 23 041
B 60 23 051
B 60 23 061
B 60 23 071
B 60 23 091

DIN-MODULAR CASES

DIN-MODULAR CASE 96 x 96 AND 144 x 72 TYPE A

DIN-MODULAR CASE 96 x 96

Detailed drawing available on demand in dwg or dxf format.



VERSION I

With guide ridges for slide-in PCB mounting on 2 sides.
Mounting lengths: 57, 75, 100 and 109 mm.

VERSION II

With guide ridges for slide-in PCB mounting on 4 sides.
Mounting lengths: 114, 124, 131, 139, 156 and 179 mm.

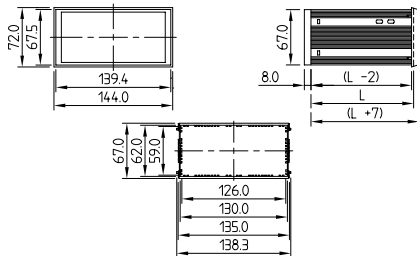
Accessories see page 187.

Part-No.

| Part-No. | CASE Standard dim. in mm | | | Version | Supply |
|-------------|-----------------------------|----|-----|---------|-----------------------------|
| | W | H | L | | |
| B 60 34 011 | 96 | 96 | 57 | I | 1 case |
| B 60 34 021 | 96 | 96 | 75 | I | 1 rear frame with snap-lock |
| B 60 34 031 | 96 | 96 | 100 | I | 2 fixings |
| B 60 34 041 | 96 | 96 | 109 | I | |
| B 60 34 052 | 96 | 96 | 114 | II | |
| B 60 34 062 | 96 | 96 | 124 | II | |
| B 60 34 072 | 96 | 96 | 131 | II | |
| B 60 34 082 | 96 | 96 | 139 | II | |
| B 60 34 092 | 96 | 96 | 156 | II | |
| B 60 34 102 | 96 | 96 | 179 | II | |

DIN-MODULAR CASE 144 x 72

Detailed drawing available on demand in dwg or dxf format.



With guide ridges for slide-in PCB mounting on 4 sides.

Accessories see page 187.

Does not correspond to
DIN 43 700.

Part-No.

| Part-No. | CASE Standard dim. in mm | | | Supply |
|-------------|-----------------------------|----|-----|-----------------------------|
| | W | H | L | |
| B 60 43 011 | 144 | 72 | 57 | 1 case |
| B 60 43 021 | 144 | 72 | 75 | 1 rear frame with snap-lock |
| B 60 43 031 | 144 | 72 | 100 | 2 fixings |
| B 60 43 041 | 144 | 72 | 109 | |
| B 60 43 051 | 144 | 72 | 114 | |
| B 60 43 061 | 144 | 72 | 124 | |
| B 60 43 071 | 144 | 72 | 131 | |
| B 60 43 081 | 144 | 72 | 139 | |
| B 60 43 091 | 144 | 72 | 156 | |
| B 60 43 101 | 144 | 72 | 179 | |
| B 60 43 111 | 144 | 72 | 200 | |

DIN-MODULAR CASE 144 x 144 TYPE A

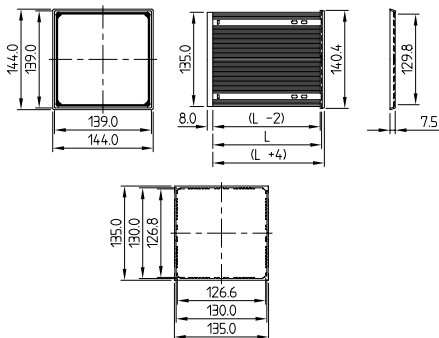


With guide ridges for slide-in PCB mounting on 4 sides.

The front panel is fixed in the corners. Therefore the access to the inside is also possible from the front.

Accessories see page 187.

Detailed drawing available on demand in dwg or dxf format.



DIN-MODULAR
CASE 144 x 144

CASE

Standard dim. in mm

| W | H | L |
|-----|-----|-----|
| 144 | 144 | 57 |
| 144 | 144 | 75 |
| 144 | 144 | 100 |
| 144 | 144 | 114 |
| 144 | 144 | 139 |
| 144 | 144 | 156 |

Supply

1 case

1 rear frame with snap-lock

2 fixings

Part-No.

B 60 45 011

B 60 45 021

B 60 45 031

B 60 45 051

B 60 45 081

B 60 45 091

Accessories DIN-MODULAR CASE TYPE A
see pages 186-187

| | | | |
|-----------------|---|----------------------------------|---------------------------------|
| | | | Order data cases see page 182. |
| | | | * no protection cover available |
| Part-No. | FOR DIN-MODULAR CASE 72 x 36* TYPE A | | |
| | Article | Version | Dimensions in mm |
| B 61 21 111 | Front panel | matt anodized aluminium | 67.7 x 31.6 x 1.5 |
| B 61 21 221 | Front panel | Noryl UL 94 V-0, black | 67.8 x 31.7 x 2 |
| B 61 21 331 | Front panel | plexiglass, transparent | 67.7 x 31.6 x 2 |
| B 61 21 341 | Front panel | plexiglass, red transparent | 67.7 x 31.6 x 2 |
| B 61 21 451 | Front panel | PC, permeable to infra-red light | 67.8 x 31.8 x 2 |
| B 61 21 112 | Rear panel | matt anodized aluminium | 57.6 x 28.6 x 1 |
| B 61 21 222 | Rear panel | Noryl UL 94 V-0, black | 57.6 x 28.7 x 1.5 |

| | | | |
|-----------------|---|----------------------------------|---------------------------------|
| | | | Order data cases see page 182. |
| | | | * no protection cover available |
| Part-No. | FOR DIN-MODULAR CASE 48 x 48* TYPE A | | |
| | Article | Version | Dimensions in mm |
| B 61 12 111 | Front panel | matt anodized aluminium | 43.6 x 43.6 x 1.5 |
| B 61 12 221 | Front panel | Noryl UL 94 V-0, black | 43.7 x 43.7 x 2 |
| B 61 12 331 | Front panel | plexiglass, transparent | 43.6 x 43.6 x 2 |
| B 61 12 341 | Front panel | plexiglass, red transparent | 43.6 x 43.6 x 2 |
| B 61 12 451 | Front panel | PC, permeable to infra-red light | 43.7 x 43.7 x 2 |
| B 61 12 112 | Rear panel | matt anodized aluminium | 42.2 x 29.6 x 1 |
| B 61 12 222 | Rear panel | Noryl UL 94 V-0, black | 42.3 x 29.6 x 1.8 |

| | | | |
|-----------------|--|----------------------------------|--------------------------------|
| | | | Order data cases see page 183. |
| Part-No. | FOR DIN-MODULAR CASE 96 x 48 TYPE A | | |
| | Article | Version | Dimensions in mm |
| B 61 32 111 | Front panel | matt anodized aluminium | 91.5 x 43.4 x 1.5 |
| B 61 32 221 | Front panel | Noryl UL 94 V-0, black | 91.6 x 43.5 x 2 |
| B 61 32 331 | Front panel | plexiglass, transparent | 91.5 x 43.4 x 2 |
| B 61 32 341 | Front panel | plexiglass, red transparent | 91.5 x 43.4 x 2 |
| B 61 32 451 | Front panel | PC, permeable to infra-red light | 91.6 x 43.5 x 2 |
| B 61 32 112 | Rear panel | matt anodized aluminium | 73.5 x 39.6 x 1 |
| B 61 32 222 | Rear panel | Noryl UL 94 V-0, black | 73.6 x 39.75 x 1.7 |
| B 61 32 533 | Protection cover | polycarbonate UL 94 V-2 | |

| | | | |
|-----------------|---|----------------------------------|--------------------------------|
| | | | Order data cases see page 183. |
| Part-No. | FOR DIN-MODULAR CASE 72 x 72 TYP A | | |
| | Article | Version | Dimensions in mm |
| B 61 23 111 | Front panel | matt anodized aluminium | 67.5 x 67.5 x 1.5 |
| B 61 23 221 | Front panel | Noryl UL 94 V-0, black | 67.6 x 67.6 x 2 |
| B 61 23 331 | Front panel | plexiglass, transparent | 67.5 x 67.5 x 2 |
| B 61 23 341 | Front panel | plexiglass, red transparent | 67.5 x 67.5 x 2 |
| B 61 23 451 | Front panel | PC, permeable to infra-red light | 67.6 x 67.6 x 2 |
| B 61 23 112 | Rear panel | matt anodized aluminium | 63.7 x 49.1 x 1 |
| B 61 23 222 | Rear panel | Noryl UL 94 V-0, black | 63.8 x 49.2 x 1.7 |
| B 61 23 533 | Protection cover | polycarbonate UL 94 V-2 | |

ACCESSORIES

DIN-MODULAR CASES TYPE A

| <p>Order data cases see page 184.</p> | <p>FOR DIN-MODULAR CASE 96 x 96 TYPE A</p> <table border="1"> <thead> <tr> <th>Article</th> <th>Version</th> <th>Dimensions in mm</th> <th>Part-No.</th> </tr> </thead> <tbody> <tr> <td>Front panel</td> <td>matt anodized aluminium</td> <td>90.6 x 90.6 x 1.5</td> <td>B 61 34 111</td> </tr> <tr> <td>Front panel</td> <td>Noryl UL 94 V-0, black</td> <td>90.7 x 90.7 x 2</td> <td>B 61 34 221</td> </tr> <tr> <td>Front panel</td> <td>plexiglass, transparent</td> <td>90.6 x 90.6 x 2</td> <td>B 61 34 331</td> </tr> <tr> <td>Front panel</td> <td>Plexiglas, red transparent</td> <td>90.6 x 90.6 x 2</td> <td>B 61 34 341</td> </tr> <tr> <td>Front panel</td> <td>PC, permeable to infra-red light</td> <td>90.7 x 90.7 x 2.2</td> <td>B 61 34 451</td> </tr> <tr> <td>Rear panel</td> <td>matt anodized aluminium</td> <td>86.7 x 71.7 x 1.5</td> <td>B 61 34 112</td> </tr> <tr> <td>Rear panel</td> <td>Noryl UL 94 V-0, black</td> <td>86.8 x 71.8 x 1.7</td> <td>B 61 34 222</td> </tr> <tr> <td>Protection cover</td> <td>polycarbonate UL 94 V-2</td> <td></td> <td>B 61 34 533</td> </tr> </tbody> </table> | Article | Version | Dimensions in mm | Part-No. | Front panel | matt anodized aluminium | 90.6 x 90.6 x 1.5 | B 61 34 111 | Front panel | Noryl UL 94 V-0, black | 90.7 x 90.7 x 2 | B 61 34 221 | Front panel | plexiglass, transparent | 90.6 x 90.6 x 2 | B 61 34 331 | Front panel | Plexiglas, red transparent | 90.6 x 90.6 x 2 | B 61 34 341 | Front panel | PC, permeable to infra-red light | 90.7 x 90.7 x 2.2 | B 61 34 451 | Rear panel | matt anodized aluminium | 86.7 x 71.7 x 1.5 | B 61 34 112 | Rear panel | Noryl UL 94 V-0, black | 86.8 x 71.8 x 1.7 | B 61 34 222 | Protection cover | polycarbonate UL 94 V-2 | | B 61 34 533 | |
|---------------------------------------|---|---------------------|-------------|------------------|----------|-------------|-------------------------|--------------------|-------------|-------------|-------------------------|------------------|-------------|-------------|-----------------------------|------------------|-------------|-------------|----------------------------|---------------------|-------------|------------------|----------------------------------|-------------------|-------------|------------|-------------------------|-------------------|-------------|------------|------------------------|-------------------|-------------|------------------|-------------------------|--|-------------|--|
| Article | Version | Dimensions in mm | Part-No. | | | | | | | | | | | | | | | | | | | | | | | | | | | | | | | | | | | |
| Front panel | matt anodized aluminium | 90.6 x 90.6 x 1.5 | B 61 34 111 | | | | | | | | | | | | | | | | | | | | | | | | | | | | | | | | | | | |
| Front panel | Noryl UL 94 V-0, black | 90.7 x 90.7 x 2 | B 61 34 221 | | | | | | | | | | | | | | | | | | | | | | | | | | | | | | | | | | | |
| Front panel | plexiglass, transparent | 90.6 x 90.6 x 2 | B 61 34 331 | | | | | | | | | | | | | | | | | | | | | | | | | | | | | | | | | | | |
| Front panel | Plexiglas, red transparent | 90.6 x 90.6 x 2 | B 61 34 341 | | | | | | | | | | | | | | | | | | | | | | | | | | | | | | | | | | | |
| Front panel | PC, permeable to infra-red light | 90.7 x 90.7 x 2.2 | B 61 34 451 | | | | | | | | | | | | | | | | | | | | | | | | | | | | | | | | | | | |
| Rear panel | matt anodized aluminium | 86.7 x 71.7 x 1.5 | B 61 34 112 | | | | | | | | | | | | | | | | | | | | | | | | | | | | | | | | | | | |
| Rear panel | Noryl UL 94 V-0, black | 86.8 x 71.8 x 1.7 | B 61 34 222 | | | | | | | | | | | | | | | | | | | | | | | | | | | | | | | | | | | |
| Protection cover | polycarbonate UL 94 V-2 | | B 61 34 533 | | | | | | | | | | | | | | | | | | | | | | | | | | | | | | | | | | | |
| <p>Order data cases see page 184.</p> | <p>FOR DIN-MODULAR CASE 144 x 72 TYPE A</p> <table border="1"> <thead> <tr> <th>Article</th> <th>Version</th> <th>Dimensions in mm</th> <th>Part-No.</th> </tr> </thead> <tbody> <tr> <td>Front panel</td> <td>matt anodized aluminium</td> <td>139.2 x 67.3 x 1.5</td> <td>B 61 43 111</td> </tr> <tr> <td>Front panel</td> <td>Noryl UL 94 V-0, black</td> <td>139.3 x 67.5 x 2</td> <td>B 61 43 221</td> </tr> <tr> <td>Front panel</td> <td>plexiglass, transparent</td> <td>139.2 x 67.3 x 2</td> <td>B 61 43 331</td> </tr> <tr> <td>Front panel</td> <td>Plexiglas, red transparent</td> <td>139.2 x 67.3 x 2</td> <td>B 61 43 341</td> </tr> <tr> <td>Front panel</td> <td>PC, permeable to infra-red light</td> <td>139.2 x 67.4 x 2</td> <td>B 61 43 451</td> </tr> <tr> <td>Rear panel</td> <td>matt anodized aluminium</td> <td>118.9 x 62.6 x 1</td> <td>B 61 43 112</td> </tr> <tr> <td>Rear panel</td> <td>Noryl UL 94 V-0, black</td> <td>119.1 x 62.7 x 2</td> <td>B 61 43 222</td> </tr> <tr> <td>Protection cover</td> <td>polycarbonate UL 94 V-2</td> <td></td> <td>B 61 43 533</td> </tr> </tbody> </table> | Article | Version | Dimensions in mm | Part-No. | Front panel | matt anodized aluminium | 139.2 x 67.3 x 1.5 | B 61 43 111 | Front panel | Noryl UL 94 V-0, black | 139.3 x 67.5 x 2 | B 61 43 221 | Front panel | plexiglass, transparent | 139.2 x 67.3 x 2 | B 61 43 331 | Front panel | Plexiglas, red transparent | 139.2 x 67.3 x 2 | B 61 43 341 | Front panel | PC, permeable to infra-red light | 139.2 x 67.4 x 2 | B 61 43 451 | Rear panel | matt anodized aluminium | 118.9 x 62.6 x 1 | B 61 43 112 | Rear panel | Noryl UL 94 V-0, black | 119.1 x 62.7 x 2 | B 61 43 222 | Protection cover | polycarbonate UL 94 V-2 | | B 61 43 533 | |
| Article | Version | Dimensions in mm | Part-No. | | | | | | | | | | | | | | | | | | | | | | | | | | | | | | | | | | | |
| Front panel | matt anodized aluminium | 139.2 x 67.3 x 1.5 | B 61 43 111 | | | | | | | | | | | | | | | | | | | | | | | | | | | | | | | | | | | |
| Front panel | Noryl UL 94 V-0, black | 139.3 x 67.5 x 2 | B 61 43 221 | | | | | | | | | | | | | | | | | | | | | | | | | | | | | | | | | | | |
| Front panel | plexiglass, transparent | 139.2 x 67.3 x 2 | B 61 43 331 | | | | | | | | | | | | | | | | | | | | | | | | | | | | | | | | | | | |
| Front panel | Plexiglas, red transparent | 139.2 x 67.3 x 2 | B 61 43 341 | | | | | | | | | | | | | | | | | | | | | | | | | | | | | | | | | | | |
| Front panel | PC, permeable to infra-red light | 139.2 x 67.4 x 2 | B 61 43 451 | | | | | | | | | | | | | | | | | | | | | | | | | | | | | | | | | | | |
| Rear panel | matt anodized aluminium | 118.9 x 62.6 x 1 | B 61 43 112 | | | | | | | | | | | | | | | | | | | | | | | | | | | | | | | | | | | |
| Rear panel | Noryl UL 94 V-0, black | 119.1 x 62.7 x 2 | B 61 43 222 | | | | | | | | | | | | | | | | | | | | | | | | | | | | | | | | | | | |
| Protection cover | polycarbonate UL 94 V-2 | | B 61 43 533 | | | | | | | | | | | | | | | | | | | | | | | | | | | | | | | | | | | |
| <p>Order data cases see page 185.</p> | <p>FOR DIN-MODULAR CASE 144 x 144 TYPE A</p> <table border="1"> <thead> <tr> <th>Article</th> <th>Version</th> <th>Dimensions in mm</th> <th>Part-No.</th> </tr> </thead> <tbody> <tr> <td>Front panel</td> <td>matt anodized aluminium</td> <td>138 x 138 x 1.5</td> <td>B 61 45 111</td> </tr> <tr> <td>Front panel</td> <td>plexiglass, transparent</td> <td>138 x 138 x 3</td> <td>B 61 45 331</td> </tr> <tr> <td>Front panel</td> <td>plexiglass, red transparent</td> <td>138 x 138 x 3</td> <td>B 61 45 341</td> </tr> <tr> <td>Rear panel</td> <td>matt anodized aluminium</td> <td>131.3 x 118.6 x 1.5</td> <td>B 61 45 112</td> </tr> <tr> <td>Protection cover</td> <td>polycarbonate UL 94 V-2</td> <td></td> <td>B 61 45 533</td> </tr> </tbody> </table> | Article | Version | Dimensions in mm | Part-No. | Front panel | matt anodized aluminium | 138 x 138 x 1.5 | B 61 45 111 | Front panel | plexiglass, transparent | 138 x 138 x 3 | B 61 45 331 | Front panel | plexiglass, red transparent | 138 x 138 x 3 | B 61 45 341 | Rear panel | matt anodized aluminium | 131.3 x 118.6 x 1.5 | B 61 45 112 | Protection cover | polycarbonate UL 94 V-2 | | B 61 45 533 | | | | | | | | | | | | | |
| Article | Version | Dimensions in mm | Part-No. | | | | | | | | | | | | | | | | | | | | | | | | | | | | | | | | | | | |
| Front panel | matt anodized aluminium | 138 x 138 x 1.5 | B 61 45 111 | | | | | | | | | | | | | | | | | | | | | | | | | | | | | | | | | | | |
| Front panel | plexiglass, transparent | 138 x 138 x 3 | B 61 45 331 | | | | | | | | | | | | | | | | | | | | | | | | | | | | | | | | | | | |
| Front panel | plexiglass, red transparent | 138 x 138 x 3 | B 61 45 341 | | | | | | | | | | | | | | | | | | | | | | | | | | | | | | | | | | | |
| Rear panel | matt anodized aluminium | 131.3 x 118.6 x 1.5 | B 61 45 112 | | | | | | | | | | | | | | | | | | | | | | | | | | | | | | | | | | | |
| Protection cover | polycarbonate UL 94 V-2 | | B 61 45 533 | | | | | | | | | | | | | | | | | | | | | | | | | | | | | | | | | | | |
| | | | | | | | | | | | | | | | | | | | | | | | | | | | | | | | | | | | | | | |