

## YOUR ADVANTAGE

- Ergonomic design. A real asset when operating and reading.
- Large area for interfaces at the top. Ideal for D-sub-plug connectors, round connectors etc.
- The interfaces can be pre-fixed onto the PCB.
- Easy assembly construction by two self-tapping screws only. This saves you time and money.
- For table-top and wall-mounting applications. The case assembly screws are accessible for both applications.
- Suitable for numeric keypads and membrane keyboards.
- Recessed control area to protect the membrane keyboard.

## STANDARD COLOURS

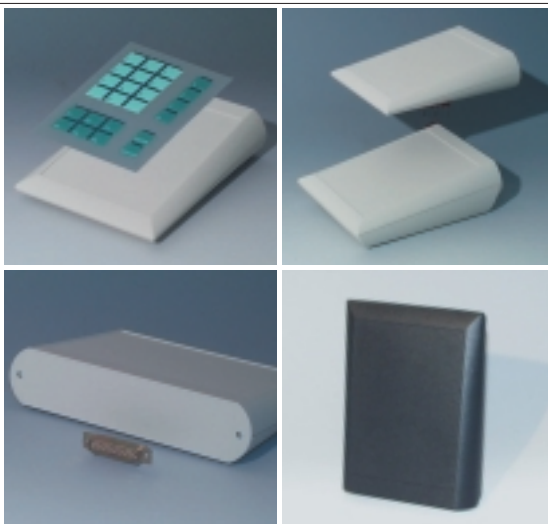
Off-white, RAL 9002.  
 Black, RAL 9005.  
 Please refer to colour chart on page 214.

## SPECIAL COLOURS

Any desired colour.

## MATERIAL

ABS (UL 94 HB).  
 Also available in other materials on request. Please refer to the specifications on pages 215-217.



## ERGONOMIC, SUITABLE FOR DESK AND WALL.

Special case system with modern, flat styling for secure and fatigue-proof operating. The new "Softline"-design is perfect for housing equipment that needs to look good.

The new COMTEC is available in 2 sizes as well as wide and narrow versions. Larger components can be accommodated in the versions with deep bottom parts. Self-adhesive rubber feet ensure desk-top positioning.

## APPLICATIONS

Measuring and control engineering, systems for data collection on the job and on machines, medical and laboratory technologies, industrial control systems, communications equipment, access and security controls, data systems engineering.

## MODIFICATIONS AS PER CUSTOMER'S REQUIREMENTS

Machining on modern CNC-controlled machines.  
 Lacquering, Silk screen and tampo printing.  
 See pages 210-213.

## DESIGN

Narrow version, two-part case with recessed operating area in the top part. Ergonomic shape. Large rectangular interface area in the top. Screw bosses for PCBs in top and bottom parts.

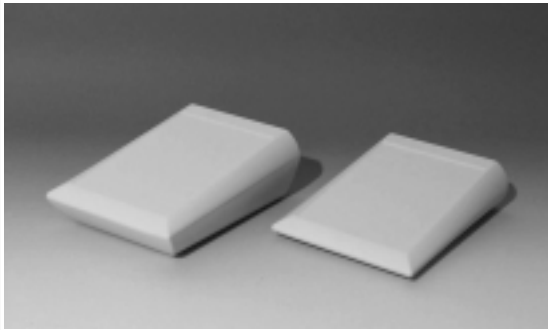
## ASSEMBLY

Case assembly with locking from the front and fixing with two self-tapping screws at the rear.

## SUPPLY

1 top and bottom part each, assembly kit incl. 4 rubber feet.

## PROTECTION CLASS IP 41

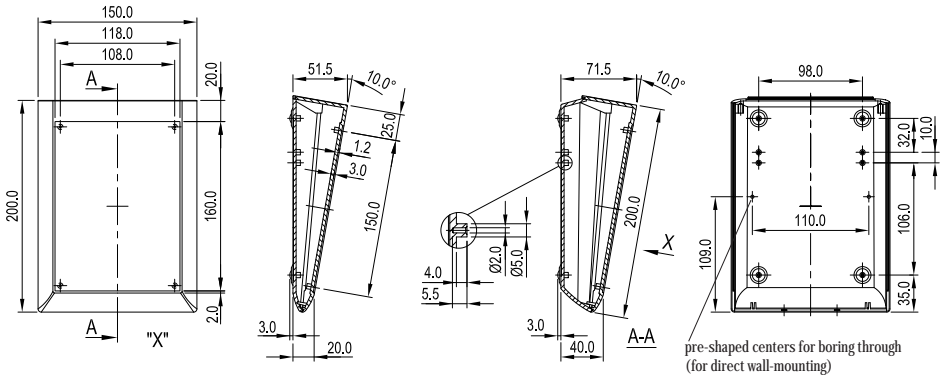


VERSION I

Without battery compartment.

Detailed drawing available on demand in dwg or dxf format.

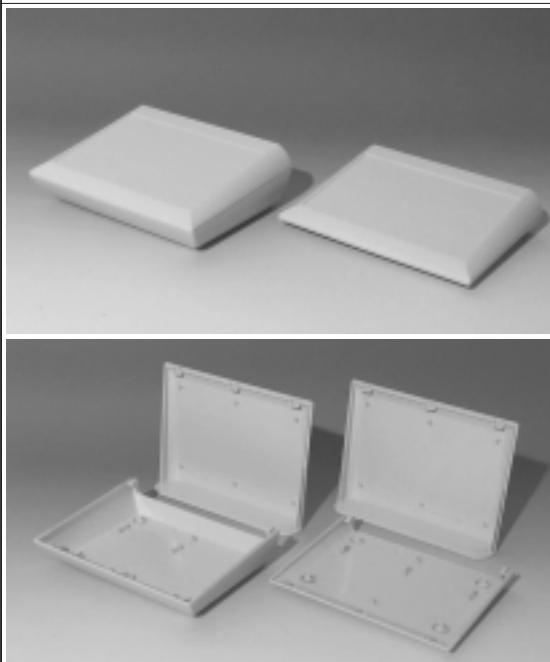
⊗ ⊕ = Type of screw for case fixing: cross head



⊗ Z (PZ1)

CASE COMTEC	Version	Outside dim. in mm			Colour	Part-No.
		W	D	H		
150 F	I	150	200	20 / 51.5	off-white	A 06 15 007
	I	150	200	20 / 51.5	black	A 06 15 009
150 H	I	150	200	40 / 71.5	off-white	A 06 15 107
	I	150	200	40 / 71.5	black	A 06 15 109
ACCESSORIES						
Article		Version / Application				
Set of screws		for mounting PCBs, ø 2.5 x 6 mm, 4 pieces per set				A 91 99 008

Reference: Further accessories, e.g. wall-suspension element see pages 199-206.



## DESIGN

Wide version, two-part case with recessed operating area in the top part. Ergonomic shape. Large rectangular interface area in the top. Screw bosses for PCBs in top and bottom parts.

## ASSEMBLY

Case assembly with locking from the front and fixing with two self-tapping screws at the rear.

## SUPPLY

1 top and bottom part each, assembly kit incl. 4 rubber feet.

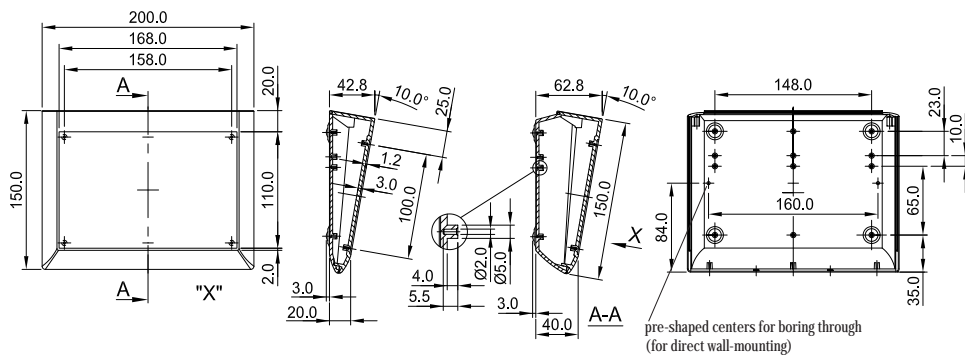
PROTECTION CLASS IP 41

## VERSION I

Without battery compartment.

Detailed drawing available on demand in dwg or dxf format.

⊗ ⊕ = Type of screw for case fixing cross head



⊗ Z (PZ1)

Part-No.	CASE		Outside dim. in mm		Colour
	COMTEC	Version	W	D H	
A 06 20 007	200 F	I	200	150 20 / 42.8	off-white
A 06 20 009		I	200	150 20 / 42.8	black
A 06 20 107	200 H	I	200	150 40 / 62.8	off-white
A 06 20 109		I	200	150 40 / 62.8	black
ACCESSORIES					
Article		Version / Application			
A 91 99 008	Set of screws		for mounting PCBs, ø 2.5 x 6 mm, 4 pieces per set		

MODIFICATIONS AS PER CUSTOMER'S REQUIREMENTS

See pages 210-213.