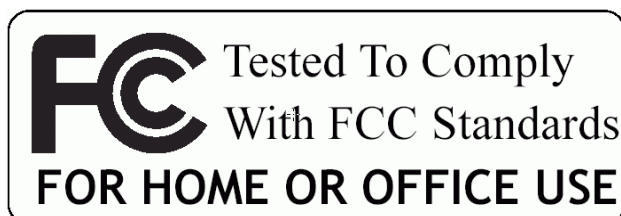


***BLUETOOTH* Phone Base**
Advanced Edition

USER'S GUIDE

VERSION 1.00



© All rights reserved.

All trade names are registered trademarks of respective manufacturers listed.

The Bluetooth name and the Bluetooth trademarks are owned by Bluetooth SIG, Inc.

This manual may not be copied in any media or form without the written consent of original maker.

TABLE OF CONTENTS

1. WELCOME	5
1.1. FEATURES	5
1.2. BEFORE YOU START	6
1.3. GETTING TO KNOW YOUR BLUETOOTH PHONE BASE	7
2. BLUETOOTH PHONE BASE INSTALLATION	8
3. CONFIGURATING BLUETOOTH PHONE BASE.....	9
3.1. CONFIGURE WITH PC UTILITY.....	9
3.1.1. Preparation	9
3.1.2. Start Using PC Utility.....	10
3.1.3. View Settings	10
3.1.4. Change Settings	11
3.2. CONFIGURE WITH REGULAR TELEPHONE	16
3.2.1. Preparation	17
3.2.2. Start Configuration.....	17
3.2.3. After Configuration	18
4. USING BLUETOOTH PHONE BASE	19
4.1. USING WITH BLUETOOTH MOBILE PHONE	19
4.1.1. Connect Phone Base.....	19
4.1.2. Answer a call	19
4.1.3. Make a call.....	19
4.2. USING WITH BLUETOOTH HEADSET	19
4.2.1. Pair with Headset	20
4.2.2. Answer a Call	20
4.2.3. Make a Call.....	20
4.3. USING WITH BLUETOOTH HANDSFREE DEVICES.....	20
4.3.1. Pair with Handsfree Device	21
4.3.2. Answer a Call	21
4.3.3. Make a Call.....	21
4.4. WHEN PHONE BASE IS PAIRED WITH TWO OR MORE DEVICES ...	22
4.5. USING CALLING CARD.....	22
4.6. OPERATION MODE.....	23
5. TROUBLESHOOTING	24
6. APPENDIX	25
6.1. APPENDIX A.....	25

6.1.1. Install Widcomm Software	25
6.1.2. My Bluetooth Place.....	28
6.1.3. Connect the Bluetooth Virtual Com.....	30
6.2. APPENDIX B.....	33

1. WELCOME

Thanks for your purchase of this Bluetooth Phone Base (advance edition).

Bluetooth Phone Base can be connected to a compatible Headset, mobile phone, PDA, or smart phone that supports Bluetooth technology. This allows you to make and receive calls freely in the building through fixed line or public switching telephone network (PSTN), as well as GSM/CDMA network.

In fact, it can be used with any compatible Bluetooth devices that support the Cordless Telephony (Terminal role) or Handsfree (Hands-Free unit role) or Headset (Headset role) Bluetooth profile.

Phone Base bridges the gap between mobile devices and wired phone. It allows you to take advantage of the high voice quality and reliability and low cost of wired phone; at the same time, you can also enjoy the convenience of making/receiving calls through mobile phones such as talking on the move and retrieving contacts' information inside the phone.

Phone Base is the central hub connecting the mobile phones, PDA or Headset/Handsfree devices around it. It is similar to DECT or cordless phone base station but provides more.

Phone Base has a build-in dialer function that a user presses one key to replace the long strings of access code and password in the calling cards.

It also supports call list (4 received/dialed/missed calls, totally 12 call numbers).

In addition, Phone Base can detect the termination of the call and hang up the call automatically, just like what your mobile does.

1.1. FEATURES

- Bluetooth specification V1.2

- Bluetooth Class 1 RF output
- Support Cordless Telephony Profile V1.1 (Gateway)
- Support Bluetooth Hands-Free Profile V1.0 and Headset Profile V1.1 (Audio Gateway).
- Support public switching telephone network (PSTN) and most PBX/PABX
- Support dual models of Caller ID: FSK and DTMF
- Support dialer function and call waiting
- Support multiple Bluetooth handsets and headsets
- Configuration via telephone set or Bluetooth

1.2. BEFORE YOU START

Please confirm your box content first.



Bluetooth
Phone Base



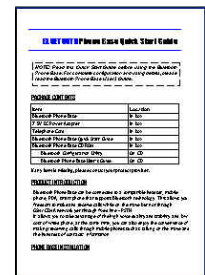
7.5V DC Power
Adapter



Telephone
Cord

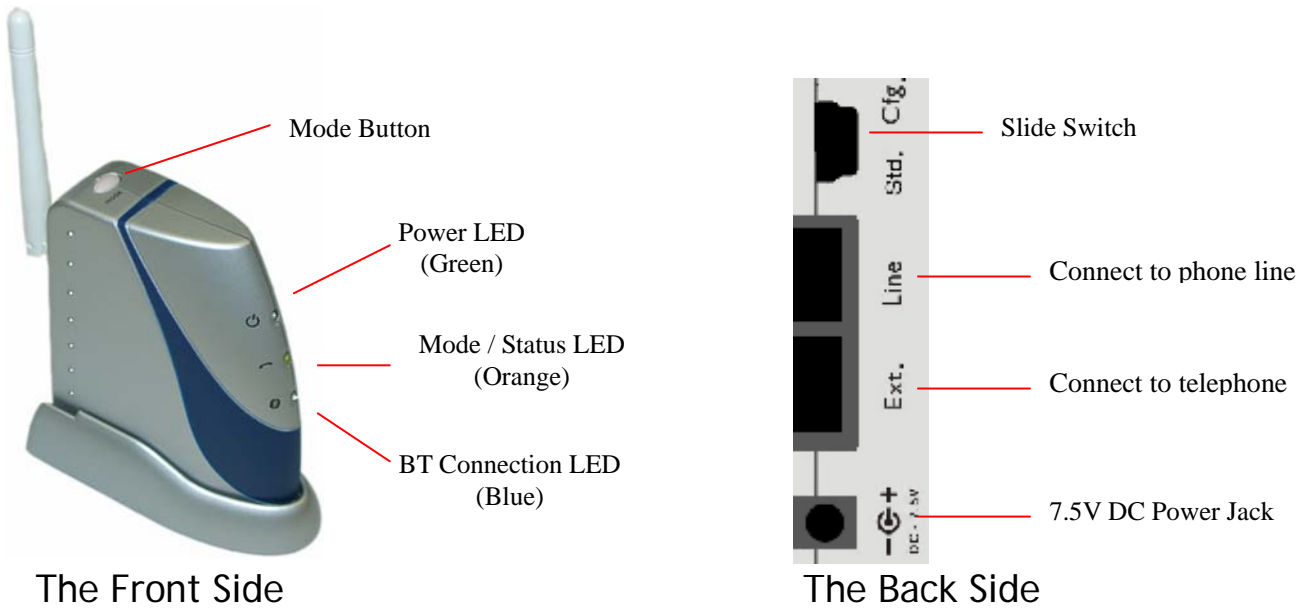


CD-ROM



Quick Start
Guide

1.3. GETTING TO KNOW YOUR BLUETOOTH PHONE BASE



- Mode Button:
Push this button to change operation between Paring/Being paired/Configuration Mode.
- Power LED (Green)
Input Power indication.
- Mode/status LED (Orange)
Mode/status indication.
- Bluetooth Connection LED (Blue)
Bluetooth connection/status indication.
[Please refer to Section 4.6 for more details.](#)
- Slider Switch
Set the Slider Switch to Cfg. position only when you doing configurations. Otherwise, it shall be at Std. position.

2. BLUETOOTH PHONE BASE INSTALLATION

- Connect the power adapter cord to the power jack. The base's orange and blue indicators will flash once and green LED stays on.

Note: If it's your first time using Phone Base, the orange and blue LED will both flash that means Phone Base is waiting to be paired. Please refer to Section 4.6.

- Unplug your telephone's line from your telephone and plug into the base's socket marked **Line**.
- Use the supplied telephone cord to connect the Base's phone jack marked **Ext.** and your telephone.

3. CONFIGURATING BLUETOOTH PHONE BASE

Bluetooth Phone Base may need to be configured before they can be properly used.

There are two ways to do configurations.

- Configure with PC utility
- Configure with regular telephone

The first way is more complicated but provides more functionality. The second way is simpler and easier but provides less functionality.

3.1. CONFIGURE WITH PC UTILITY

You need a Bluetooth enabled PC or Notebook that has a Bluetooth virtual COM port to configure Phone Base.

The configuration utility allows you to:

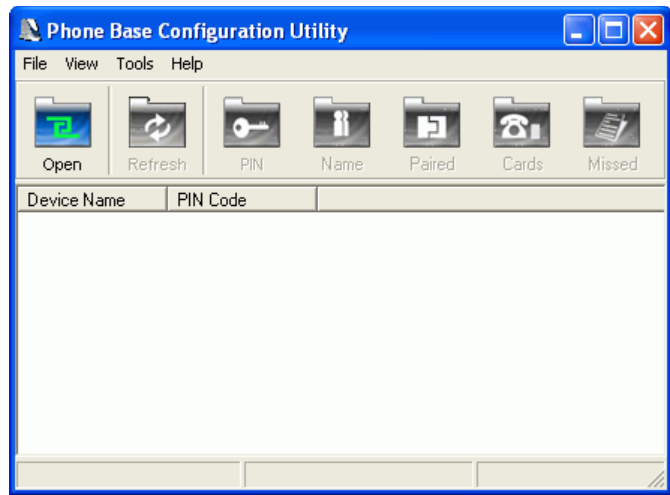
- View/Change PIN code
- View/Enter calling card number
- View/Edit call lists
- View/Delete the Bluetooth address of the paired devices
- View/Change device name
- Upgrade firmware

3.1.1. Preparation

- Connect Phone Base with Bluetooth virtual COM port on your PC/Notebook.

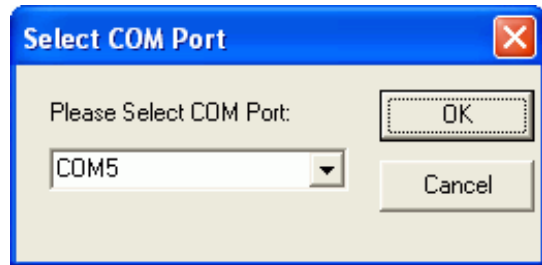
Please refer to [Appendix A](#) for an example about how to connect and open Bluetooth virtual COM port using Widcomm software.

- Launch the Phone Base Utility

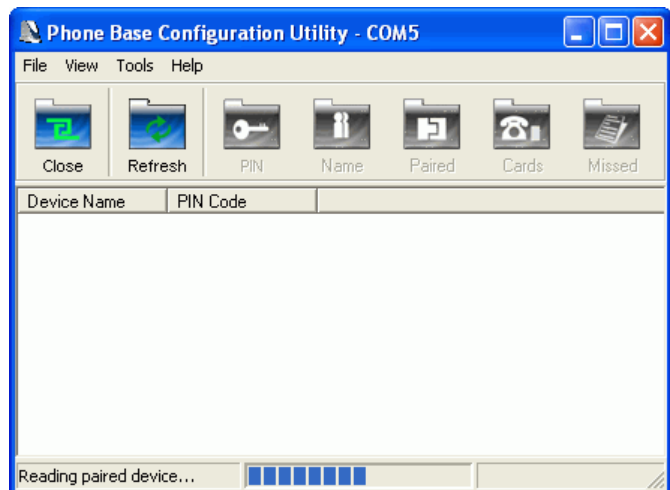


3.1.2. Start Using PC Utility

- Click on the menu item **File->Open COM Port...** or speed button **Open** on the tool bar. A COM port selection dialog appears.

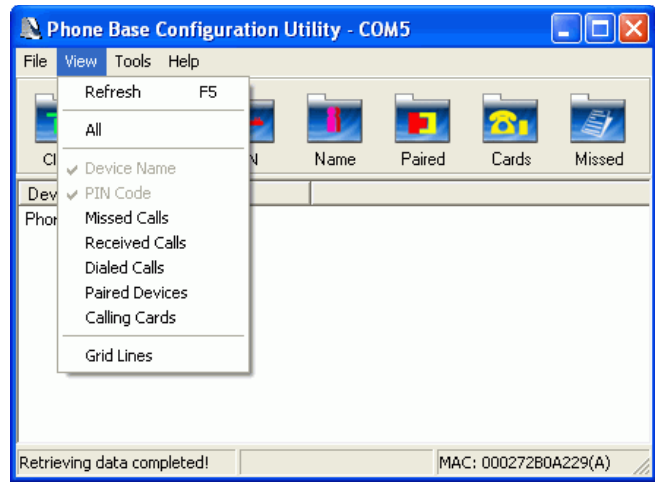


- Select the **RIGHT** virtual COM port Phone Base connected. Click **OK** button. Utility starts to retrieve Phone Base's settings.



3.1.3. View Settings

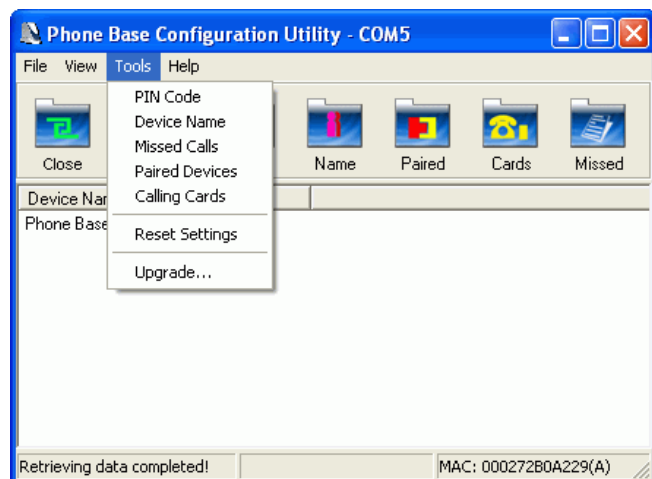
After retrieving completed, Phone Base's device name and PIN code will be shown by default. Menu **View** enables you to view all the settings (**View->All**) or just to choose to view the items you're interested in (for example, **View->Missed Calls**).



Click on menu item **View->Refresh** or speed button **Refresh** on the tool bar or press **F5** will restart retrieving the settings.

3.1.4. Change Settings

Menu “**Tools**” provides the functionalities about changing the settings.



- **Change PIN Code**

There are two PIN codes in Phone Base, one is for active pairing, the other is for passive pairing.

Active pairing means Phone Base looks for the nearby devices and initiates the pairing process.

Passive pairing means other device initiates the pairing process and Phone Base is just waiting to be paired.

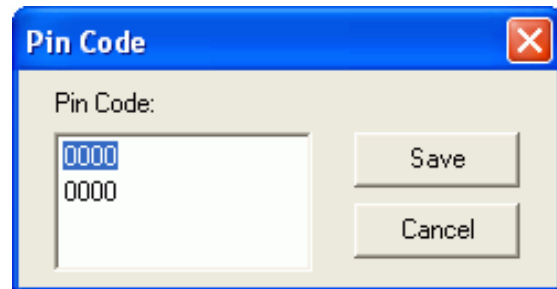
The default PIN codes are both “0000”. You may need to change it to meet your mobile phone or headset/handsfree device’s PIN code.

Steps:

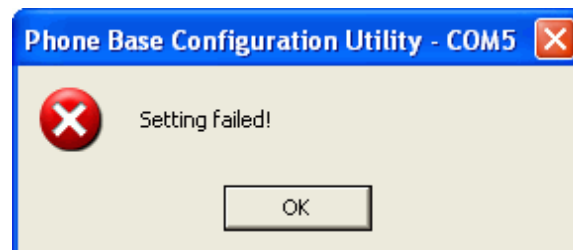
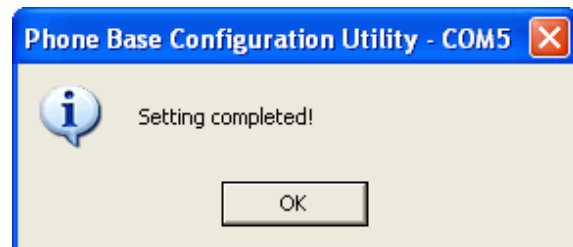
- Click on the menu item **Tools->PIN Code** or speed button **PIN**. A “Pin

Code" dialog appears.

- Type in the required PIN code in the edit box. The upper is Pin code for active pairing, the lower is for passive pairing.
- Click **Save** button.



Note: After you set any item and pressed **Save/Delete** button, there comes a confirmation dialog telling whether configuration has been set successfully, just click the **OK** button.



■ Enter calling card number

You can store 2 calling card numbers.

A typical calling card may include four items:

- Local access number
- Language selection
- Card number
- Password

The dialing instruction in your calling card may ask you to dial local number first, followed by language selection. Then you need to key in card number ended with “#” key and password ended with “#” key. After that, you dial the number that you want to call.

To facilitate your dialing, you can store the long string of calling card number in Phone Base. When you need dial a call through your calling card, just enter “#” (using the 1st calling card) or “##” (using the 2nd calling card) before your phone number to dial.

When a pause is needed, type in character “P”. Each “P” represents one-second pause.

In stead of calling card number, you can also store any frequently used numbers to facilitate your dialing.

Steps:

- Click on the menu item Tools->Calling Cards or speed button Cards. A “Calling Cards” dialog appears.
- Type in the each four items, when a pause is needed, type in character “P”. You can also type your number directly in the edit box below “New Calling Card to Save:”.
- Click Save button.

Example:

Suppose that you are in office and you need to press “0” to get the outside line. In a calling card, the access number is 11122, language selection is 1 for English, 2 for Spanish. The card number is 3333-4444-5555+”#” and the password is 6666+”#”.

Here is an example to store this calling card number:

Access Code: “0P11122PP”

Language: “1PP”

Card No.: “333344445555#P”

PIN No: “6666#”

Calling Cards

Calling Card1 | Calling Card2

Access Code: 0P11122PP

Language: 1PP

Card No. #: 333344445555#P

PIN #: 6666#

New Calling Card to Save:

0P11122PP-1PP-333344445555#P-6666#

Save Cancel

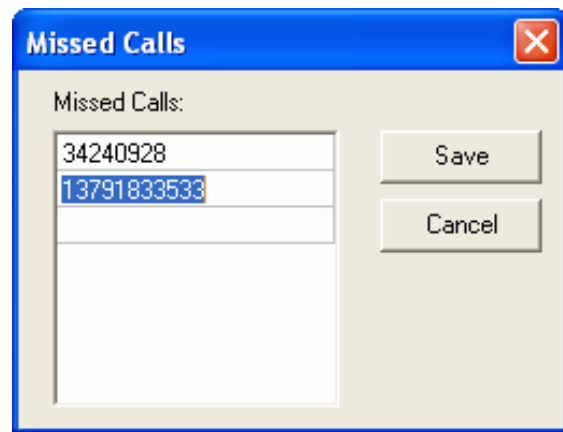
■ Edit missed call list

Phone Base can record missed calls, dialed calls and received calls. Each call category can store up to four numbers.

Steps:

- Click on the menu item **Tools->Missed Calls** or speed button **Missed**. A "Missed Calls" dialog appears.
- Select and edit a missed call number.
- Click **Save** button.

Note: To allow you to edit the missed calls is to facilitate your dialing from a Handsfree device that can read missed calls from Phone Base such as Sony Ericsson HBH-200.

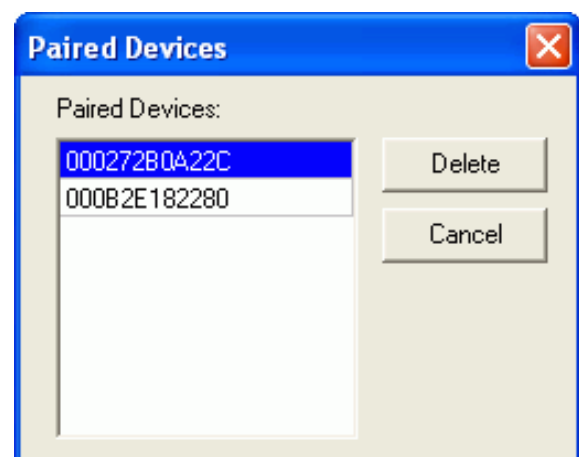


■ Delete the Bluetooth address of paired devices

Steps:

- Click on the menu item **Tools->Paired Devices** or speed button **Paired**. A "Paired Devices" dialog appears.
- Click the **Delete** button on the right of a particular device's address if you want to remove this pairing.

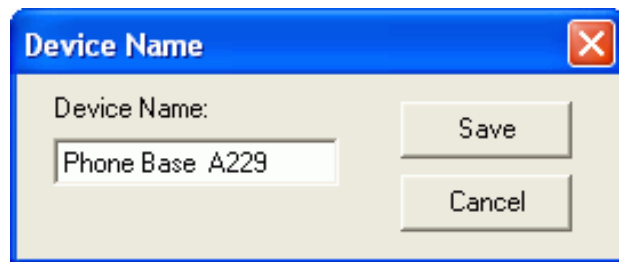
Note: After you deleted the paired device, you need to do the pairing again if you want to use such device again.



■ Change Device Name

You can change Phone Base's local name. The name length is limited to 31. The default name is "Phone Base".

- Click on the menu item **Tools->Device Name** or speed button **Name**. A "Device Name" dialog appears.
- Type in a new name in the edit box.
- Click the **Save** button.



Note: Non-alphanumeric letters are restricted when typing in the edit boxes. For example, you can't type in "\$" in the edit boxes. And there are also length limit for the settings.

■ Reset Settings

When you encounter any problem and need to restore the settings back to the default values, click on menu item **Tools->Reset Settings**. This will clear the call lists and paired device information and the PIN code will be "0000".

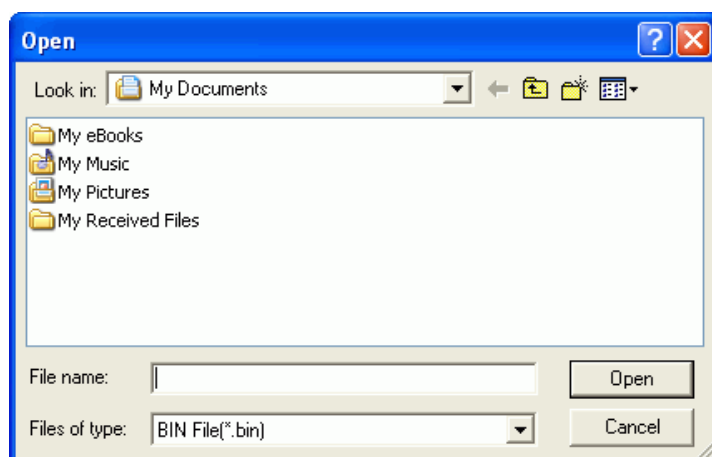
Note: Be careful to use this function.

■ Upgrade Firmware

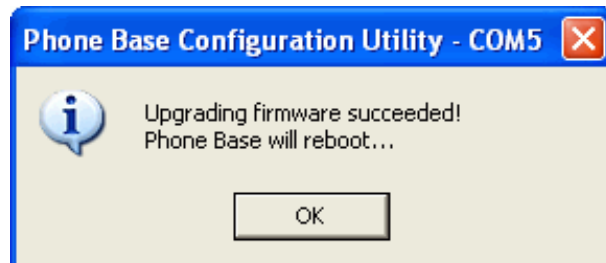
When any new firmware released, you can upgrade it.

Note: Be very careful to use this function.

- Click on menu item **Tools->Upgrade...**
- It lets you choose a .bin file (must be the bin file that your manufacture provides) and starts upgrading after you assure to do it.



- After upgrading succeeds, Phone Base will reboot and you need to reconnect it if you want to do configurations again.



Note: When there appears a dialog like below during upgrading, it means the firmware has been partially updated but not finished. You should keep Phone Base power on and try upgrading again. It's VERY IMPORTANT to keep Phone Base power on. Otherwise Phone Base will not be able to run normally again.



3.2. CONFIGURE WITH REGULAR TELEPHONE

Bluetooth Phone Base may need to be configured before they can be properly used.

Before configuration, a regular telephone shall have been plugged into Phone Base.

You can:

- Change PIN code
- Enter calling card number

3.2.1. Preparation

- Turn the Slide Switch to the Cfg. position.
- Pick up the phone handle and Press * key twice.
You will hear two short tones. That means Phone Base has entered into the configuration mode.
Note: Only after you hear the two short tones, you are able to do configurations successfully. In case you do not hear the right tones, repeat pressing * key.

3.2.2. Start Configuration

After entering into the configuration mode (refer to 3.1.1),

- **Change PIN**

There are two PIN codes in Phone Base, one is for active pairing, the other is for passive pairing.

Active pairing means Phone Base looks for the nearby devices and initiates the pairing process.

Passive pairing means other device initiates the pairing process and Phone Base is just waiting to be paired.

The default PIN codes are both "0000". You may need to change it to meet your mobile phone or headset/handsfree device's PIN code.

Index of the Pin code for active pairing is 0.

Index of the Pin code for passive pairing is 1.

Press 0*, then the PIN code index: 0* (for active pairing) or 1* (for passive pairing), then the PIN code you want to set, after that, press * key twice at the end.

Note: After you pressed the end **, you will hear a confirmation tone, a long tone means configuration success, a short tone means a failure.

Example:

If you want to set the PIN code for active pairing as "1234", enter **0*0*1234**.

- **Enter calling card number**

Press 1*, then the calling card number index: 0* or 1*, then the total calling

number, after that press * key twice at the end.

Note: To enter "pauses", press * key following a number to indicate the number of "pause". Each "pause" represents one-second pause.

Example:

Suppose that you are in office and you need to press "0" to get the outside line. In a calling card, the access number is 1111-2222, language selection is 1 for English, 2 for Spanish (before enter the language section number, pause 3 seconds). The card number is 3333-4444-5555+"#" and the password is 6666+"#" .

So the total string to enter is: **1*0*11112222*31333344445555#6666#** for setting the 1st calling card.

3.2.3. After Configuration

Note: After configuration completed, it's **IMPORTANT** to turn the **Slide Switch** back to the **Std.** position.

4. USING BLUETOOTH PHONE BASE

Before using your Bluetooth handsfree device or headset to make/receive calls, you have to pair it with phone base first.

But with mobile phone it's not necessary to pair first.

4.1. USING WITH BLUETOOTH MOBILE PHONE

Your mobile/PDA/smart phone shall support Bluetooth Cordless Telephony (Terminal role) or Handsfree (Hands-Free unit role) or Headset (Headset role) Bluetooth profile.

4.1.1. Connect Phone Base

- Start searching neighborhood Bluetooth devices from your mobile.
[Please refer to the user's guide of your mobile for details.](#)
- Select "Phone Base" from your mobile found device list and try to pair with it. When PIN code is asked, type in the same Pin code that Phone Base sets for passive pairing. The default PIN code is "0000".
[Please refer to the user's guide of your mobile for details.](#)

4.1.2. Answer a call

When there's an incoming call, Phone Base rings. The blue LED stays on. You may hear audio tone in mobile.

Press **Accept** key in your mobile to answer the call. The blue LED and the orange LED both stay on during the call.

Press **Reject** key to hang up the call.

4.1.3. Make a call

Making a call through Phone Base is just like you making a call through GSM or CDMA. However you mobile shall provide the selection about through Bluetooth or GSM or CDMA to make the call.

[Please refer to the user's guide of your mobile for details.](#)

4.2. USING WITH BLUETOOTH HEADSET

Bluetooth Headset shall support Headset (Headset role) Bluetooth profile. Some new headsets also support Handsfree (Hands-Free unit role) Bluetooth

profile such as Sony Ericsson HBH-200, Nokia HS-3W. If you use such a headset, please refer to Section 4.3.

4.2.1. Pair with Headset

The default PIN code in Phone Base is "0000". If the PIN code in your Headset is not "0000", please go to Section 3 for how to change PIN code.

a) Set your headset in pairing mode.

Please refer to the user's guide of your Bluetooth Headset for details.

b) Press the **Mode** button (less than 5 seconds) and the blue LED will flash.

c) Phone Base begins looking for nearby headsets. After several seconds, the blue LED stops flashing. If pairing succeeds, your headset LED or tone shall indicate that it has been paired with some device.

Note: To avoid Phone Base pairing with unintended device, make sure no other headset or other Bluetooth device is in the neighborhood.

4.2.2. Answer a Call

When there's an incoming call, Phone Base rings. The blue LED stays on.. You may hear audible tone in the headset.

Press **Talk** key in your headset to answer the call. The blue LED and the orange LED both stay on.

Press **Talk** key again to hang up the call.

4.2.3. Make a Call

- Attach a regular telephone set to Phone Base.
- Press the **Talk** key in your headset. (Some Bluetooth headsets may not support this feature.) The blue LED and orange LED both stay on.
- Pick up the phone handle and dial a number. You will hear dial tones in the headset.
- Put back phone handle and use the Headset to talk.
- Press **Talk** key again to hang up the call.

4.3. USING WITH BLUETOOTH HANDSFREE DEVICES

Handsfree devices shall support Handsfree (Hands-Free unit role) Bluetooth

profile. Example of such device is Bluetooth Car-kit Handsfree. Some Bluetooth Headsets such as Sony Ericsson HBH-200, Nokia HS-3W also support this profile.

4.3.1. Pair with Handsfree Device

The default PIN code in Phone Base is "0000". If the PIN code in your Handsfree is not "0000", please go to Section 3 for how to change PIN code.

- Set your Handsfree device on pairing mode.
[Please refer to the user's guide of your Handsfree device for details.](#)
- Press the **Mode** button (less than 5 seconds) and blue LED will blink.
- The Phone Base begins looking for nearby Handsfree devices. After several seconds, the blue LED stops flashing. If pairing succeeds, your Handsfree LED or tone shall indicate that it has been paired with some device.

Note: To avoid Phone Base pairing with unintended device, make sure no other Handsfree or Headset or other Bluetooth device is in the neighborhood.

4.3.2. Answer a Call

When there's an incoming call, Phone Base rings. The blue LED stays on. You may hear audible tone in Handsfree.

Press **Accept** key in your Handsfree to answer the call. The blue LED and the orange LED both stay on.

Press **Reject** key to hang up the call.

4.3.3. Make a Call

There are two ways to make a call:

a) Same as the way in **Make a call** when using headset

[Please refer to Section 4.2.3.](#)

b) Dial the desired number in your Handsfree

[Please refer to your Handsfree device's user's guide for more details.](#)

Here we use Sony Ericsson HBH-200 as an example.

- Press **Accept** key on the HBH-200. HBH-200 will connect the Phone Base and reads its phone list.
- Note: Phone Base supports 4 dialed calls, 4 received calls and 4 missed calls.
- Press **Volume Up** or **Volume Down** key to select the number you want to dial. (You can also use the Configuration Utility to edit the number you want to dial.)
- Press **Accept** key to dial out the call. The orange LED will stay on and blue LED will flash.
- Press **Reject** key to hang up the call.

4.4. WHEN PHONE BASE IS PAIRED WITH TWO OR MORE DEVICES

Phone Base stores a paired device list. It can be paired with up to 7 Bluetooth devices.

If your mobile supports CTP profile, your mobile shall first connect to Phone Base before you can receive alerts when there is an incoming call.

[Please refer to the user's guide of your mobile for details.](#)

When there is an incoming call, Phone Base will try to connect the paired devices.

The call will be routed to the first device that accepts the call.

Note: When you paired the 8th device, the least used/paired device will be deleted automatically from the Phone Base's paired device list.

4.5. USING CALLING CARD

Before using calling card, you need to store calling card numbers first.

[Please refer to Section 3 for more details.](#)

Press “#” (using the 1st calling card) or “##” (using the 2nd calling card) first before you dial the desired number. Phone Base will dial the calling card number first before your call number.

Please refer to Section 4.1.3 or 4.3.3 for more details about how to make a call with mobiles or Handsfree devices.

Note: Making calls using telephone (the way described in Section 4.2.3) will not work (calling card will not automatically be dialed out).

4.6. OPERATION MODE

Phone Base has five different modes that are indicated by the orange LED and the blue LED in various statuses.

Table below lists the LED status in different modes.

Mode	LED Status		Remark
	Orange LED	Blue LED	
Ready	Off	Off	Power up
Active Pairing	Off	Blink	Press Mode button (less than 5 seconds), Phone Base will looking for nearby Bluetooth Headset or Handsfree device
Ring	Off	On	When there is an incoming call, Phone Base rings
Talk	On	On	Press Talk/Accept key in Headset or Handsfree device
Upgrading Firmware	Blink	Blink	Using PC utility to upgrade firmware when new firmware is released by manufacture
Reset Settings	Blink Once	Off	Press Mode button (more than 5 seconds), Phone Base will reset PIN codes to "0000" and clear the call lists and pairing devices

5. TROUBLESHOOTING

1. Symptom:

When Phone Base rings, my Headset or Handsfree can not answer the call

Answer:

- a) Make sure that your device is turned on.
- b) Make sure that the phone line is in right phone jack marked **Line**
- c) Make sure that your device is within the coverage of phone base.
- d) Make sure that your device has been paired with Phone Base. Please refer to Section 3.

2. Symptom:

When I use the way described in Section 4.2.3 to make a call, I can't hear any dial tone.

Answer:

- a) Make sure that the slide switch is on the **Std.** Position
- b) Make sure your phone line works well

6. APPENDIX

6.1. APPENDIX A

6.1.1. Install Widcomm Software

NOTE : This software is needed only if you have a USB Bluetooth Dongle, and you want to use it to communicate with Bluetooth Phone Base. Skip this section if you are not using it.

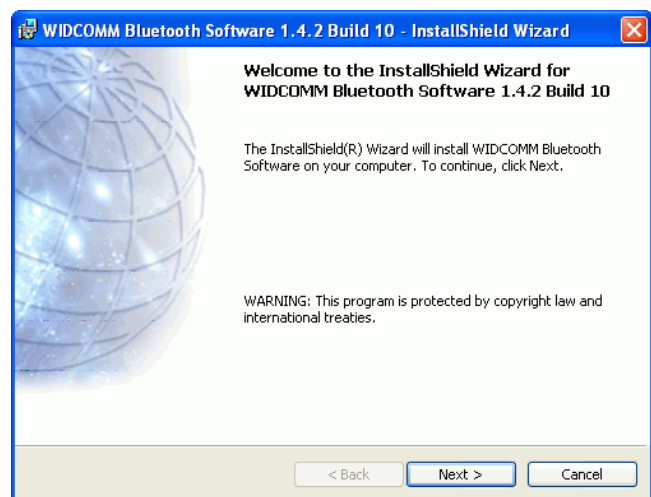
This software is not included in our Bluetooth Phone Base package. We assume you already purchased a Bluetooth USB dongle product and it already bundled with this software. We also assume you already installed this software in your PC. If NOT, please read the following messages to learn how to do it.

This Widcomm software is accompanied with the Bluetooth USB dongle product you purchased. Try to download the latest revision.

There are other Bluetooth services that Widcomm software provides. We will only emphasize on the **Bluetooth Serial Port** service, and you may try to know other services by yourself.

The following steps tell you how to install the Widcomm software.

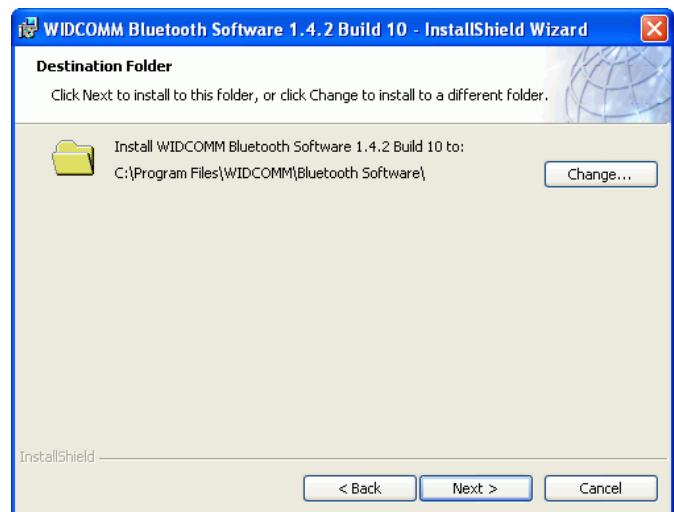
Step 1 : Find Setup.exe from the given Widcomm software CD or downloaded install files, and double click on it to install Widcomm Bluetooth Software. It opens the InstallShield Wizard dialog box, then click **Next**.



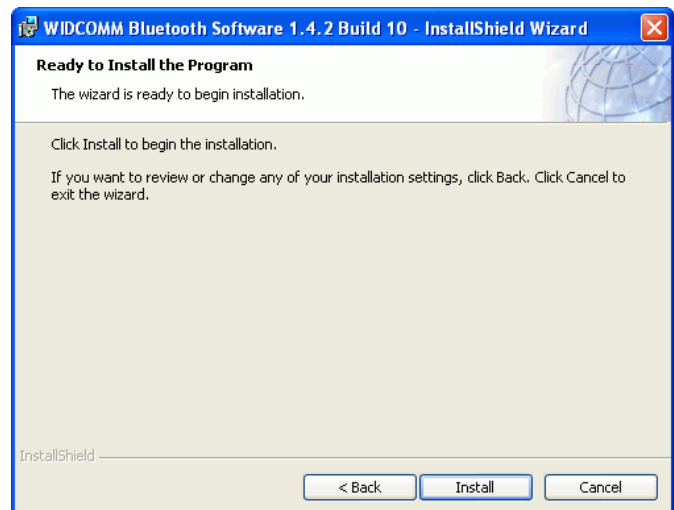
Step 2 : Accept the software license agreement. Click **Next**.



Step 3 : Select destination folder, you can choose the default or change to your favorite.

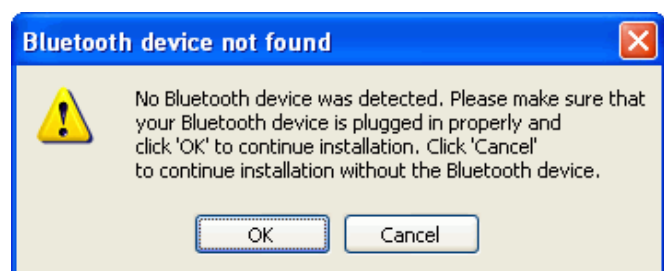


Step 4 : Click **Install** to start the installation.





If you have not plugged in Bluetooth Dongle onto your PC before, one reminding window will show up to ask you to plug in it before installation can be finished.

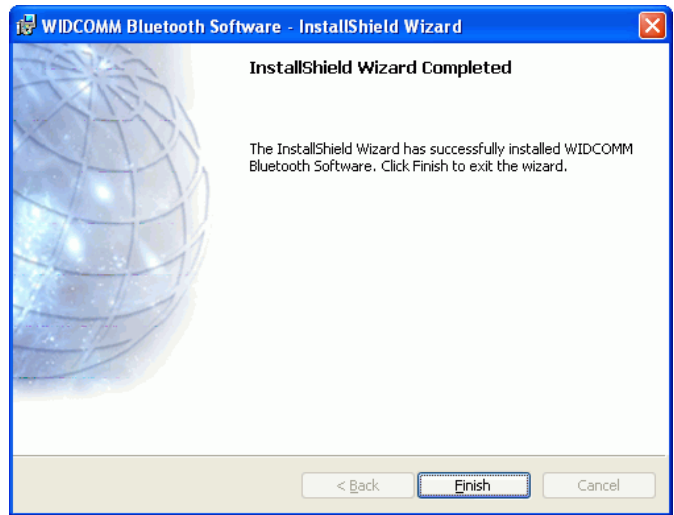
Step 5 : Click **OK** to continue the installation.



Step 6 : Installation is complete .




My Bluetooth Places should appear on your desktop and a similar icon also appears on the lower right corner of your screen. You can double click  on desktop or right click  on the lower right hand task bar of your screen, then click “**Explore My Bluetooth Places**” menu to start “My Bluetooth Places” program.

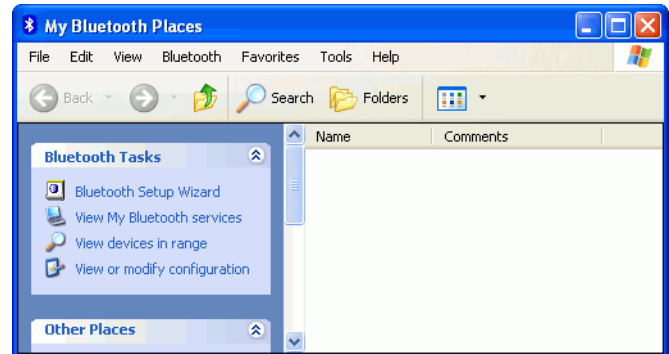


6.1.2. My Bluetooth Place


Step 1 :

Method 1 :

Double click  on your desktop.
Click **Folder** on the toolbar. Folder window will appear on left side of your screen.



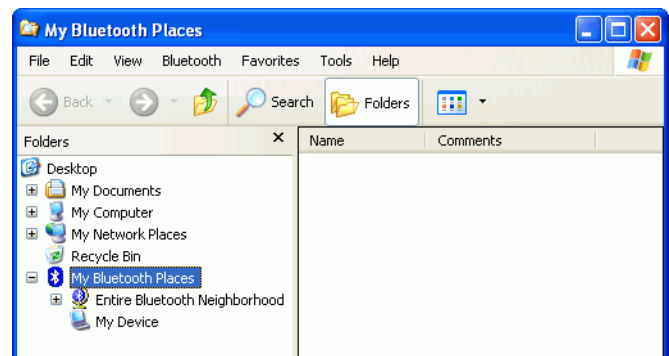
Method 2:

Right click  on the lower right hand corner of your screen.
Select **Explore My Bluetooth Places**.



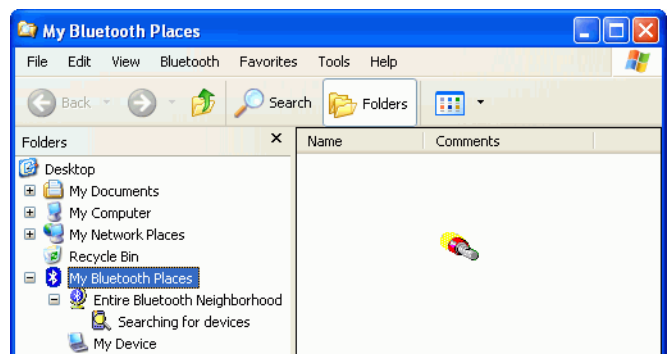
Two folders appear on the window.
They are :

Entire Bluetooth Neighborhood
and **My Device**.

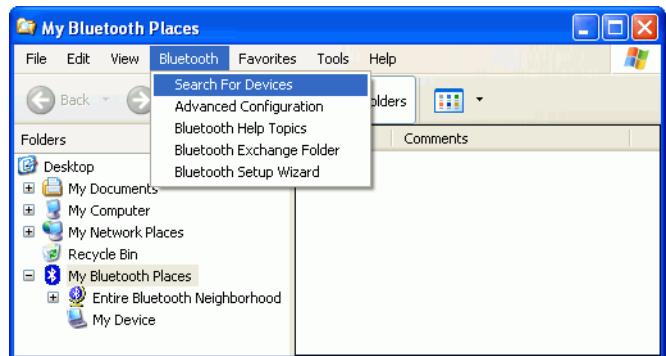


Step 2 :

Click **Entire Bluetooth Neighborhood** to search for devices available to you. Once Bluetooth devices are detected, their icons together with device names will be displayed on the screen.

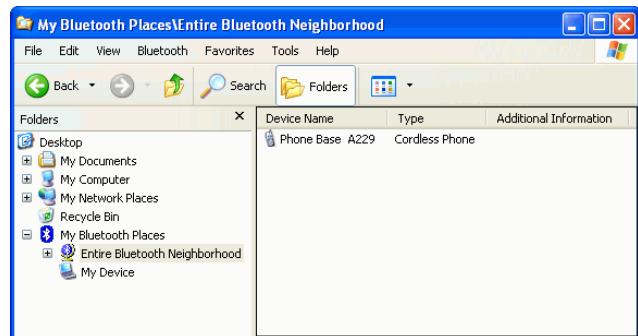


You also may start a search for devices by clicking **Bluetooth** from the toolbar.



Step 3 :


In this example, one Phone Base is found in your Bluetooth neighborhood.

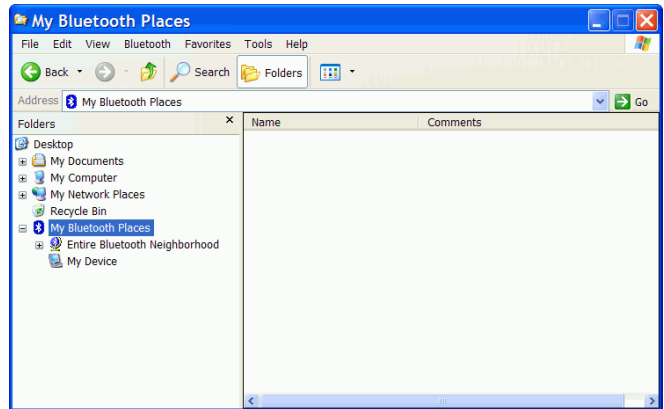


The "My Bluetooth Places" program provides an easy way to find different application services through Bluetooth connections. A variety of Bluetooth services and explanations can be found in the "Help" file of the "My Bluetooth Places" program.

6.1.3. Connect the Bluetooth Virtual Com

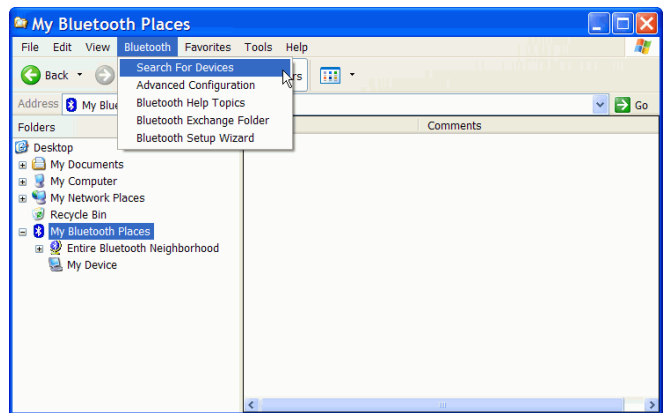
Step 1 :

Double click  on your desktop. Click **Folder** on the toolbar. Folder window will appear on left side of your screen.

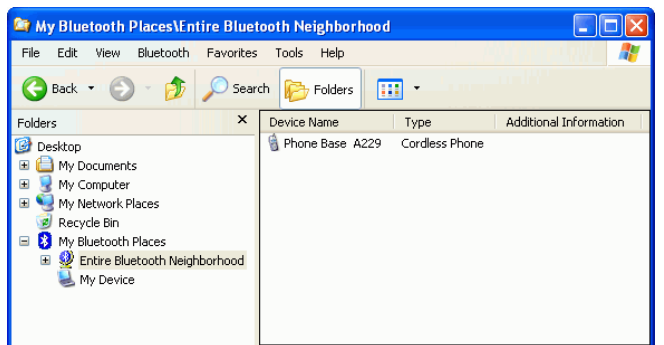


Step 1 :

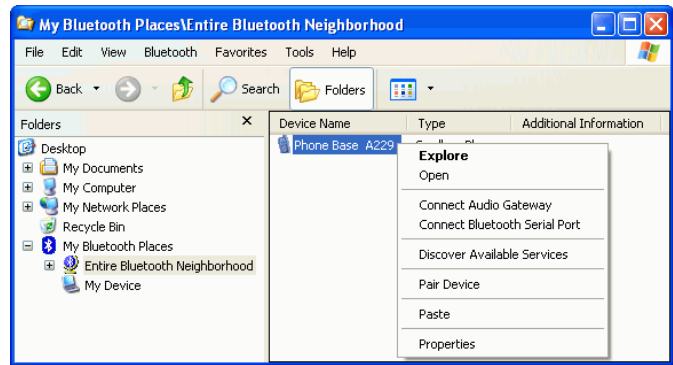
Click **Bluetooth** from the toolbar, then click **Search For Devices** to search for Bluetooth devices available to you. Once Bluetooth devices are detected, their icons together with device names will be displayed on the screen.



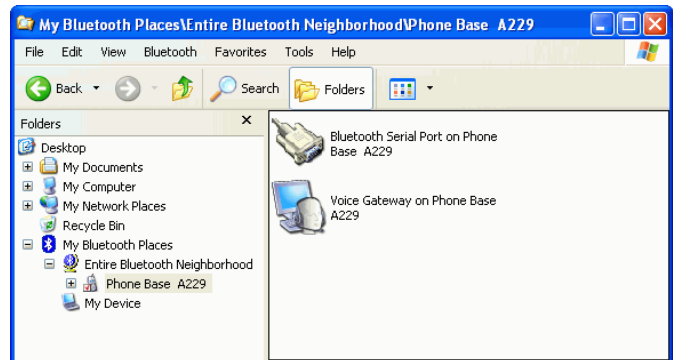
Make sure your Phone Base is in Configuration mode. Please refer to Section 4.5 for how to enter Configuration mode. You may find your Phone Base named as "Phone Base xxxx". "xxxx" is the last four digits of Phone Base's address.



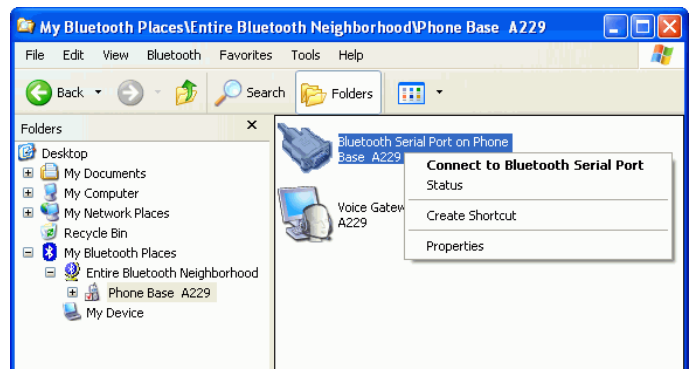
Right click on device name "Phone Base xxxx", then click on **Discover Available Services**.



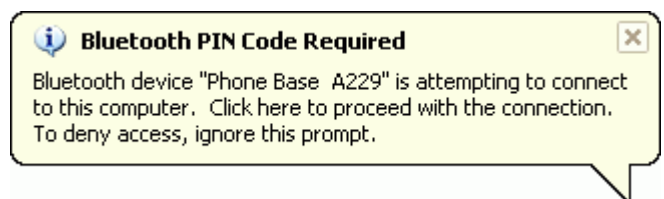
You can find the services that Phone Base provided are "Bluetooth Serial Port" and "Voice Gateway".



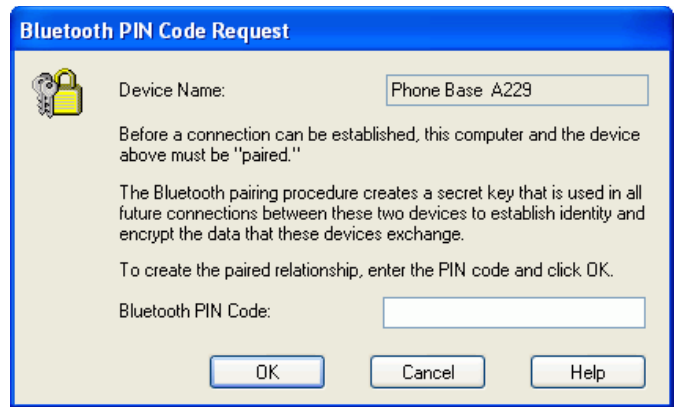
Right click on the service "Bluetooth Serial Port", then click on **Connect to Bluetooth Serial Port**.




Pin code will be asked if it's your first time connecting Phone Base.

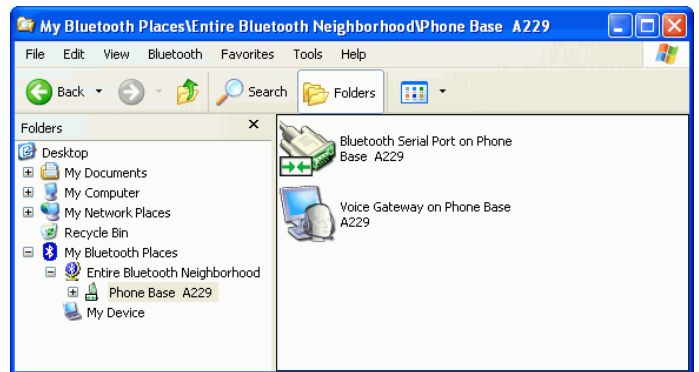


Type in the PIN code for passive pairing. It's "0000" by default.

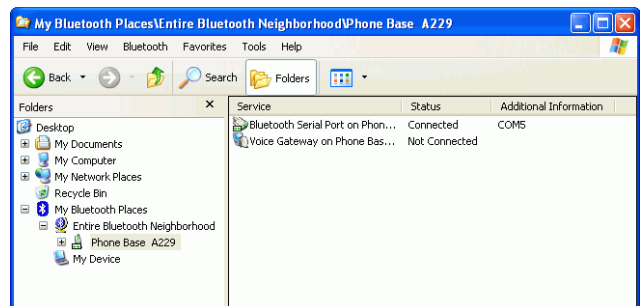


A connection between local PC Bluetooth Dongle and Bluetooth Phone Base will be built.

An icon  will be displayed to inform you that a successful connection has been created, and blue LED on Bluetooth Phone Base will on.



Click the device name "Phone Base xxxx", (Select **Details** in menu **View**) Widcomm software will inform you that a virtual COM port (COM5 in this case) is used by your PC (USB Bluetooth Dongle) to communicate with the Bluetooth Phone Base.



Now the Bluetooth virtual COM port has been connected. You can launch the Phone Base utility from PC and do configurations.

6.2. APPENDIX B

Specifications:

Product Name	Bluetooth Phone Base
Certification	FCC, CE, BOB
Standard	Bluetooth v1.2
Bluetooth Profiles	Gateway in Cordless Telephony Profile (CTP) v1.1 Audio Gateway in Headset profile v1.1 and Hands-Free profile v1.0
Frequency Band	2.4~2.4835GHz unlicensed ISM band
Spread Spectrum	FHSS (Frequency Hopping Spread Spectrum)
RF Output Power	Class 1; 13dBm typical
Antenna	External antenna
Working Distance	Up to 40m in free space (used with class 2 headset)
Sensitivity	<-88dBm at < 0.1% BER Power
Input Power	7.5VDC
LEDs Indicator	3 LED's: Power / Bluetooth status/ phone line status
Phone Feature	1. Two modes of Caller ID: FSK and DTMF 2. Dialer 3. Store up to 12 phone numbers
Windows Utility	1. Configure PIN 2. In dialer function, store access code and password 3. View/Edit call list 4. Change local name
Phone Jack	Two RJ-11, one for line in, another for extension
Configuration	Telephone set or Bluetooth enabled PC
Multiple Devices	Support up to 7 handsets and headsets
Firmware Upgrade	Upgrade by Bluetooth enabled PC
Operating Temperature	0 ~ +60°C
Storage Temperature	-10 ~ +70°C
Humidity	5 ~ 90% (non-condensing)
Size	113(L) x 92(W) x 35(H) mm

Safety Guide:

- Read and follow all instructions and warnings provided.
- Save these instructions for future use.
- When service or replacement of parts is required, ensure work is done by a qualified technician.
- Do not use this unit near water or in a rainy/moist environment.
- Use supplied cables only.
- Do not attempt to service this product yourself. Doing so will expose you to various hazards including dangerous voltage.
- This unit is suitable for a 110V to 230V AC power supply (Auto-detect).
- Disconnect the power cable (pull plug) and USB cable in the following situations :
 - In the event of service.
 - Power cable/plug becomes damaged.
 - Unit is exposed to excess moisture/rain
 - Unit has been dropped.
 - Unit is being cleaned.
- Unit must be used with adult supervision at all times. Children must not be allowed to handle any of the cables.
- Never insert any objects other than CDs in the trays.
- Never insert any objects through ventilation holes.

Remember !

Any electrical equipment is hazardous if handled improperly.

FCC COMPLIANCE

This device complies with Part 15 of the FCC Rules. Operation is subject to the following two conditions: (1) This device may not cause harmful interference, and (2) This device must accept any interference received, including interference that may cause undesired operation.

Federal Communications Commission (FCC) Statement

This equipment has been tested and found to comply with the limits for a Class B digital device, pursuant to part 15 of the FCC Rules. These limits are designed to provide reasonable protection against harmful interference in a residential installation. This equipment generates, uses and can radiate radio frequency energy and, if not installed and used in accordance with the instructions, may cause harmful interference to radio communications. However, there is no guarantee that interference will not occur in a particular installation. If this equipment does cause harmful interference to radio or television reception, which can be determined by turning the equipment off and on, the user is encouraged to try to correct the interference by one or more of the following measures:

- Reorient or relocate the receiving antenna.
- Increase the separation between the equipment and the receiver.
- Connect the equipment to an outlet on a circuit different from that to which the receiver is connected.
- Consult the dealer or an experienced radio/TV technician for help.

Warning:

To meet FCC requirements, a shielded power cord is required in order to prevent interference. It is essential that only the supplied power cord is to be used. Use only shielded cables to connect I/O devices to this equipment. You are cautioned that changes or modifications not approved by the party responsible for compliance could void your authority to operate the equipment.

One Year Limited Warranty

- This device is guaranteed against manufacturing defects for one full year from the original date of purchase.
- This warranty is valid at the time of purchase and is non-transferable.
- This warranty must be presented to the service facility before any repair can be made.
- Sales slip or other authentic evidence is required to validate warranty.
- Damage caused by accident, misuse, abuse, improper storage, and/or uncertified repairs is not covered by this warranty.
- All mail or transportation costs including insurance are at the expense of the owner.
- Do not send any product to service center for warranty without a RMA (Return Merchandise Authorization) and proof of purchase. Ensure a trackable method of delivery is used (keep tracking number).
- Warranty is valid only in the country of purchase.
- We assume no liability that may result directly or indirectly from the use or misuse of these products.

IMPORTANT

" This warranty will be voided if the device is tampered with, improperly serviced, or the security seals are broken or removed"