

Разъем USB на плату тип А

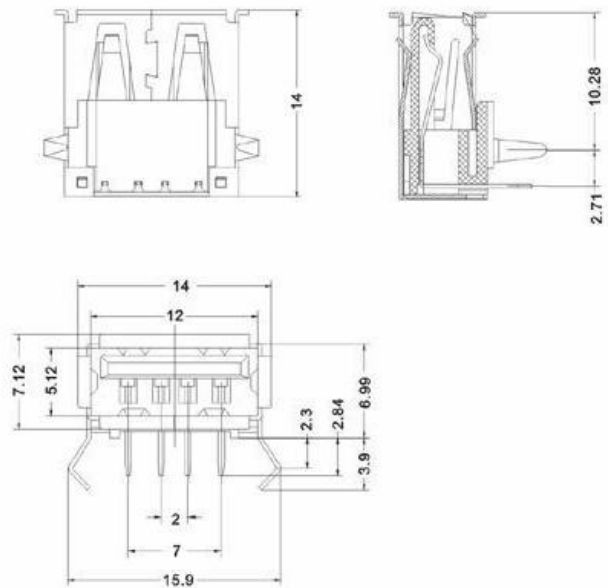


Specifications:

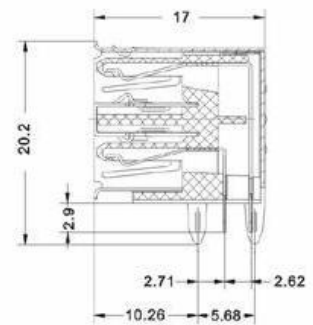
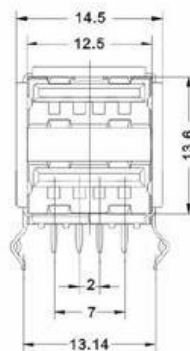
Contact Resistance: 30m Ω max.
Insulator Resistance: 1000M Ω min.at DC 500V
Current Rating: 1AMP
Voltage Rating: 30V AC

Dielectric Withstanding

Housing: PBT&30% Glass Fiber(UL 94V-0)
Contact: Phosphor Bronze
Dielectric Strength: AC 500V For 1 minute



Разъем USB на плату сдвоенный тип А



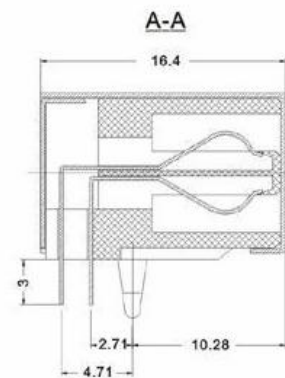
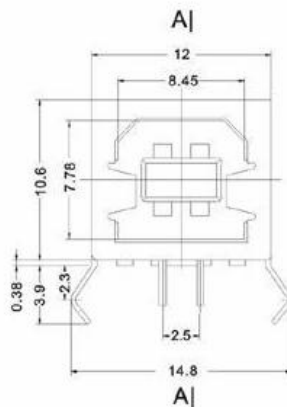
Specifications:

Contact Resistance: 30m Ω max.
Insulator Resistance: 1000M Ω min.at DC 500V
Current Rating: 1AMP
Voltage Rating: 30V AC

Dielectric Withstanding

Housing: PBT&30% Glass Fiber(UL 94V-0)
Contact: Phosphor Bronze
Dielectric Strength:AC 500V For 1 minute

Разъем USB на плату тип В



Specifications:

Contact Resistance: 30m Ω max.
Insulator Resistance: 1000M Ω min.at DC 500V
Current Rating: 1AMP
Voltage Rating: 30V AC

Dielectric Withstanding

Housing: PBT&30% Glass Fiber(UL 94V-0)
Contact: Phosphor Bronze
Dielectric Strength: AC 500V For 1 minute

Разъм Mini USB-A на кабель

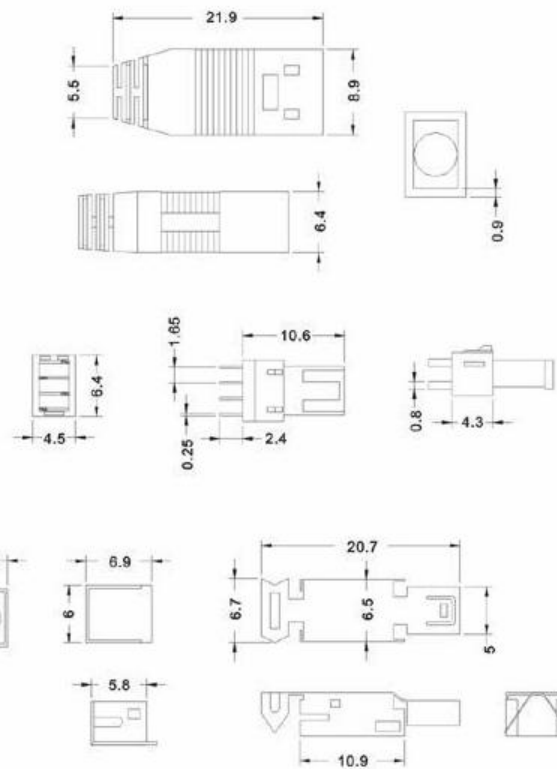


Specifications:

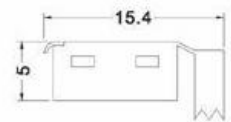
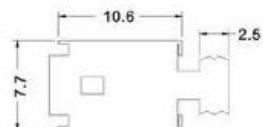
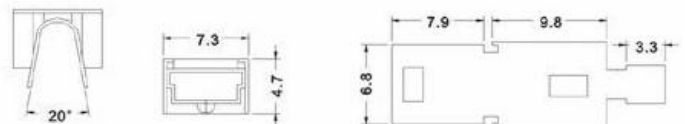
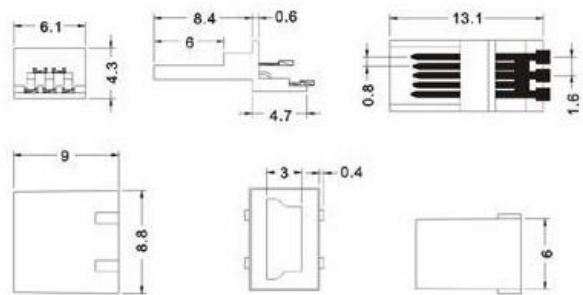
Contact Resistance: 10m Ω max.
Insulator Resistance: 500M Ω min.at DC 500V
Current Rating: 24V DC 1AMP max

Dielectric Withstanding:

Voltage: AC 500V For 1 minute
Contact: Brass
Housing: PBT &30% Glass Fiber(UL 94V-0)



Разъем Mini USB-A 5 контактов на кабель



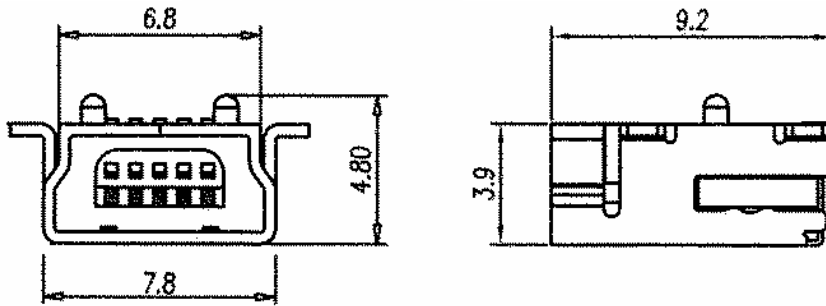
Specifications:

Contact Resistance: 10m Ω max.
 Insulator Resistance: 500M Ω min.at DC 500V
 Current Rating: 24V DC 1AMP max

Dielectric Withstanding:

Voltage: AC 500V For 1 minute
 Contact: Brass
 Housing: PBT &30% Glass Fiber(UL 94V-0)

Разъём Mini USB 5 контактов на плату



Разъём IEEE 1394 на плату

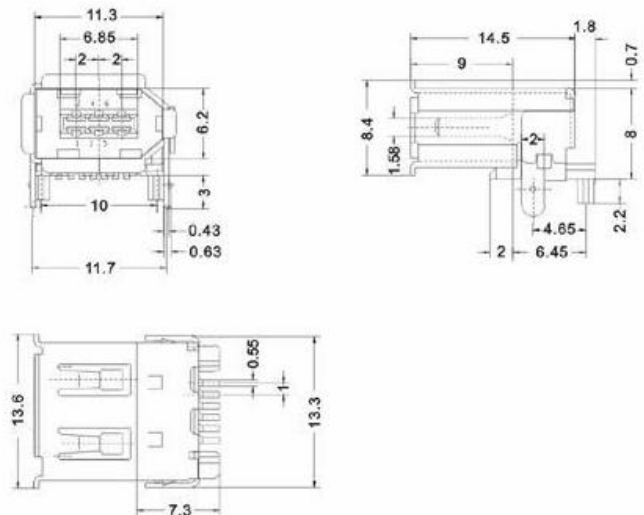


Specifications:

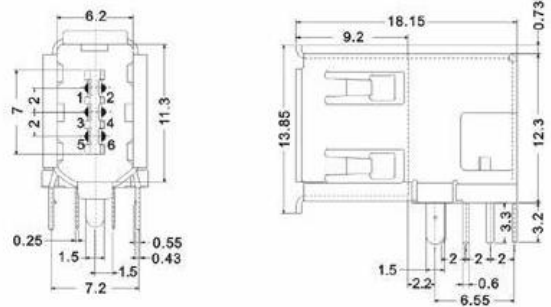
Contact Resistance: $2m\ \Omega$ max
Insulator Resistance: $1000M\ \Omega$ min. at DC 500V
Current Rating: 2AMP
Voltage Rating: 30V AC

Dielectric Withstanding:

Voltage: AC 500V For 1 minute
Contact: Copper Alloy
Housing: Thermoplastic(UL 94V-0)



Разъем IEEE1394 угловой на плату



Specifications:

Contact Resistance: $2m\ \Omega$ max
Insulator Resistance: $1000M\ \Omega$ min.at DC 500V
Current Rating: 2AMP
Voltage Rating: 30V AC

Dielectric Withstanding:

Voltage: AC 500V For 1 minute
Contact: Copper Alloy
Housing: Thermoplastic(UL 94V-0)

